

DAILY MARKET REPORT

MARKETS – DAILY COMMENTS & MARKET DRIVERS

On Tuesday, Aug'26 MATIF opened at €510 and traded between highs of €515 and lows of €509.25, before settling at €513, up €4 on Monday's settlement.

- On the CBOT, it was a mixed day across the three legs of the soy complex. May'26 soybeans fell 4.2c to settle at \$11.73/bu, soy oil gained 1.12c to settle at 73.38c/lb, whilst soymeal fell 40c to settle at \$333.4/t. **Price Impact – Mixed**
- On the Bursa Malaysia, Jul'26 crude palm oil gained 2RM to settle at 4,536RM. **Price Impact – Mixed**
- On the Dalian, May'26 soybeans gained 18CNY to settle at 4,907CNY, soymeal gained 20CNY to settle at 2,861CNY, whilst soy oil gained 9CNY to settle at 8,550CNY. **Price Impact – Positive**
- Nearby (Jun'26) Brent crude gained \$3.03 to settle at \$111.26/b. **Price Impact – Positive**
- Brent gained nearly 3% yesterday, marking seven straight days of Brent gains, as continued supply disruptions in the Straits of Hormuz outweighed the news that the UAE is to withdraw from OPEC in order to ramp up production.
- Benchmark European natural gas fell €1.05 to settle at €43.59/MWh (May'26). **Price Impact – Positive**
- EU Commission data places 25/26 EU OSR imports at 4.12Mmt so far this season, down from 5.83Mmt at the same time last season. **Price Impact – Positive**
- The USDA attache in Canada estimates 26/27 Canadian wheat production at 36.2Mmt. **Price Impact – Mixed**
- EU Commission data places 25/26 EU soft wheat exports at 19.28Mmt so far this season, up from 18.1Mmt at the same time last season. **Price Impact – Mixed**
- US soybean plantings are running at 23% complete, up from 17% complete last year, and the 5yr average of 12%. **Price Impact – Mixed**

Hubbards Seeds – Cover, Companions, Forage, Trees & More

Whether it's cover crops ahead of a spring crop, a companion in your OSR, maize for silage, or trees & hedging for structure & biodiversity, we're here to support every part of your rotation.

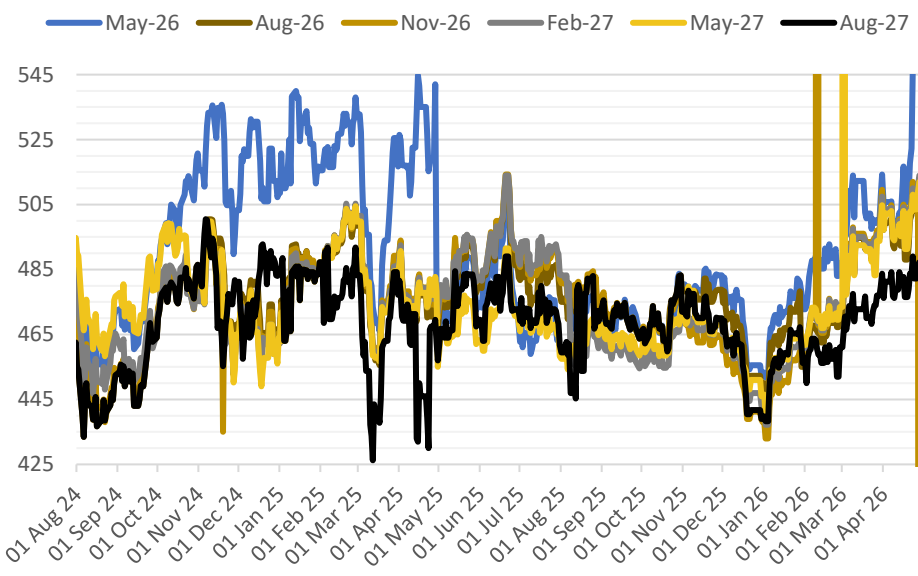
01380 729200 ~ hello@hubbardsseeds.co.uk

	Erith	Liverpool	Stratford	Berwick	Montrose	Whitehill / Murphy
Aug-26	£453	£451	£452	£435	£431	£425
Sep-26	£458	£456	£457	£439	£433	£427
Oct-26	£460	£458	£459	£441	£435	£429
Nov-26	£462	£460	£461	£443	£437	£431



MARKET TRENDS & CURRENCY

MATIF OSR Daily Settlement €/t



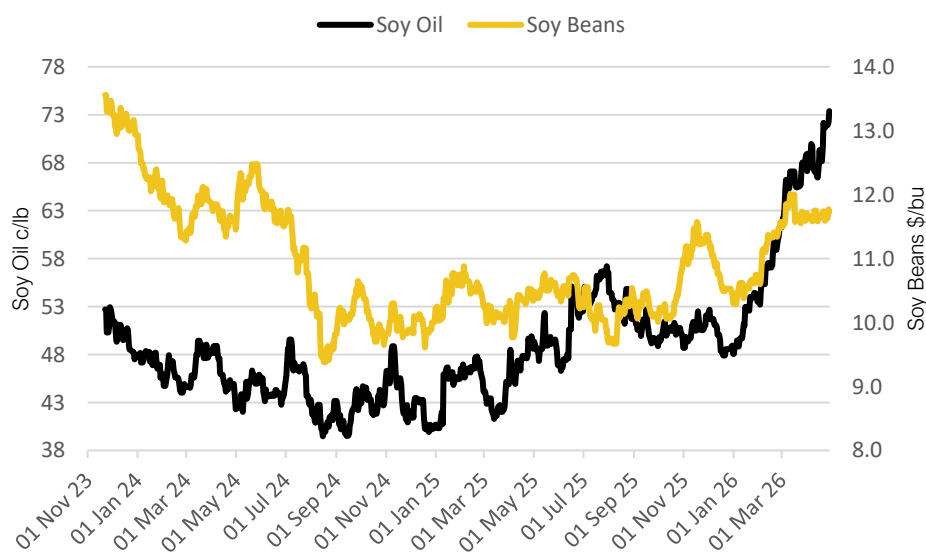
Nearby ICE London Feed Wheat Daily Settlement £/t



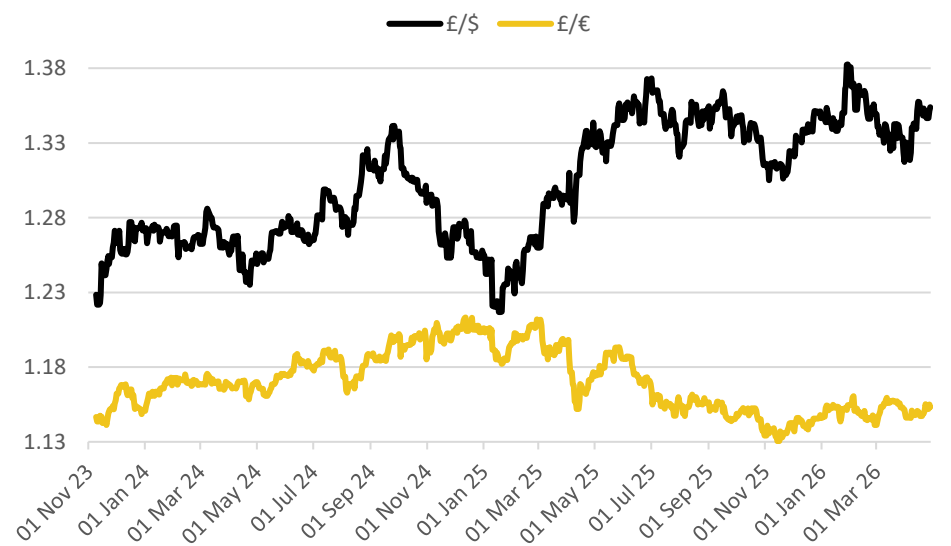
CBOT US Soy Complex – Settlement 28.04.2026			
Contract	\$	Month	Daily Change
Soybeans (\$/bu)	\$11.73	May-26	-4.2c
Soy Oil (c/lb)	73.38c	May-26	+1.12c
Soy Meal (\$/T)	\$333.4	May-26	-\$0.40

ICE London Feed Wheat – Settlement 28.04.2026		
Delivery Month	£/t	Daily Change
May-26	£186.20	+£3.30
Nov-26	£189.25	+£4.30
Jan-27	£192.40	+£4.30
Mar-27	£195.55	+£4.30

CBOT US Soy Beans & Soy Oil



Exchange Rates: GBP / USD & GBP / EUR



THE UNITED OILSEEDS OSR REBOOT5

Restore UK OSR Self Sufficiency – Boost Economic Growth – Reverse Biodiversity Declines – Level the Playing Field for UK Farmers

SAVE OUR YELLOW FIELDS! – [View the Campaign Here](#)