

# DAILY MARKET REPORT

## MARKETS – DAILY COMMENTS & MARKET DRIVERS

**On Monday, Aug'26 MATIF opened at €505 and traded between highs of €509.50 and lows of €503.75, before settling at €509, up €6 on Friday's settlement.**

- On the CBOT, all three legs of the soy complex settled higher yesterday. May'26 soybeans gained 13.4c to settle at \$11.77/bu, soy oil gained 0.35c to settle at 72.26c/lb, whilst soymeal gained \$9.5 to settle at \$333.8/t. **Price Impact – Negative**
- On the Bursa Malaysia, Jul'26 crude palm oil fell 63RM to settle at 4,534CNY.
- On the Dalian, May'26 soybeans gained 19CNY to settle at 4,889CNY, soymeal gained 13CNY to settle at 2,841CNY, whilst soy oil settled unchanged at 8,541CNY. **Price Impact – Negative**
- Nearby (Jun'26) Brent crude gained \$2.9 to settle at \$108.23/b. **Price Impact – Positive**
- Brent made gains to begin the week, after news that Trump is reputedly unhappy with the latest Iranian proposals to end war stalemate, which comes as Iranian oil tankers have been turned around by the US blockade of the Straits of Hormuz.
- Benchmark European natural gas fell 22c to settle at €44.65/MWh (May'26). **Price Impact – Mixed**
- MARS estimate 2026 EU OSR yields at 3.25/ha, up from 3.22t/ha in previous estimates. **Price Impact – Negative**
- MARS estimate 2026 EU soft wheat yields at 6.05t/ha, up from 5.98t/ha. **Price Impact – Negative**
- US winter wheat crop conditions are 30% good to excellent, above estimates of 29%, unchanged on last week, and down from 49% on last year.
- SovEcon estimate Apr'26 Russian wheat exports at 4Mmt, down from 4.7Mmt last month, and up from 2.4Mmt in Apr'25. **Price Impact – Mixed**
- US soybean area plantings have reached 23% completion so far, above estimate of 22%, up from 12% last week, 17% last year, and above the 5yr average of 12%. **Price Impact – Mixed**

### Hubbards Seeds – Cover, Companions, Forage, Trees & More

Whether it's cover crops ahead of a spring crop, a companion in your OSR, maize for silage, or trees & hedging for structure & biodiversity, we're here to support every part of your rotation.

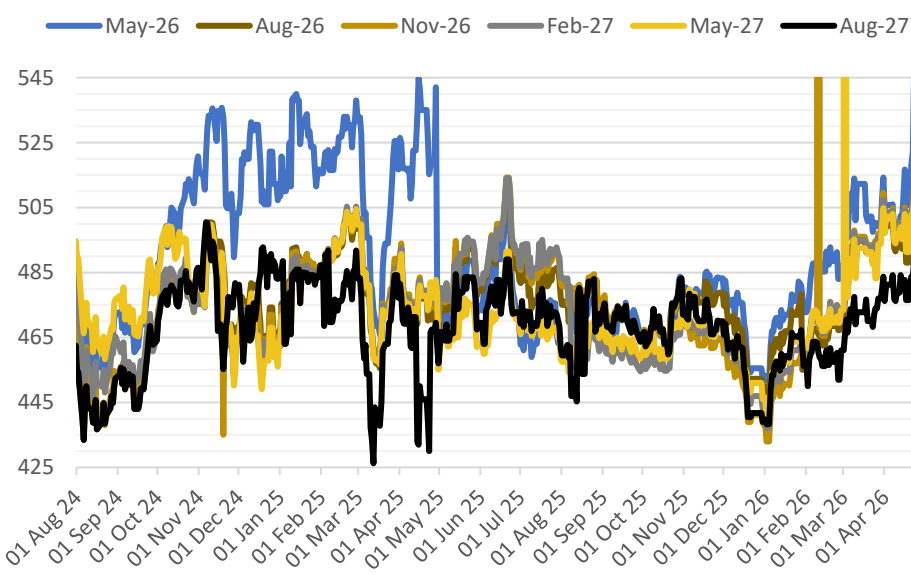
01380 729200 ~ hello@hubbardsseeds.co.uk

	Erith	Liverpool	Stratford	Berwick	Montrose	Whitehill / Murphy
<b>Aug-26</b>	£448	£446	£447	£430	£426	£420
<b>Sep-26</b>	£453	£451	£452	£434	£428	£422
<b>Oct-26</b>	£455	£453	£454	£436	£430	£424
<b>Nov-26</b>	£457	£455	£456	£438	£432	£426

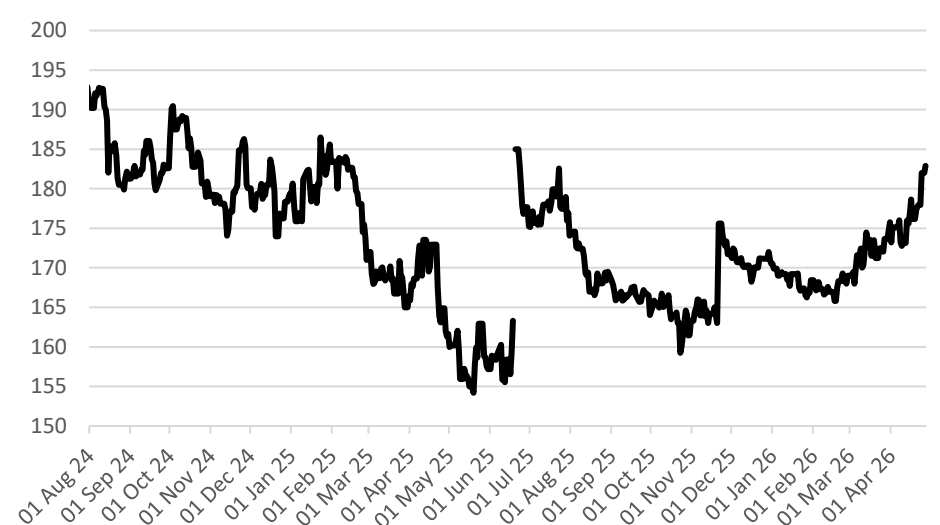


### MARKET TRENDS & CURRENCY

MATIF OSR Daily Settlement €/t



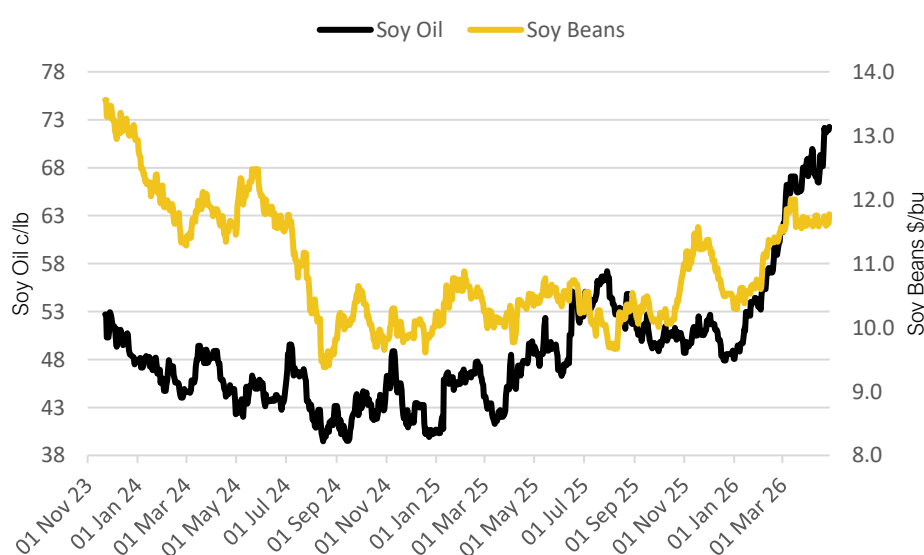
Nearby ICE London Feed Wheat Daily Settlement £/t



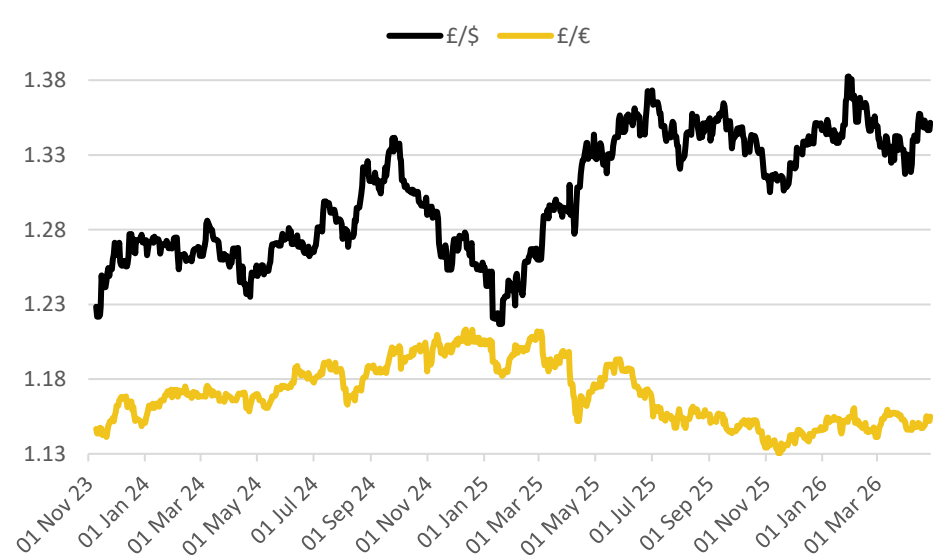
CBOT US Soy Complex – Settlement 27.04.2026			
Contract	\$	Month	Daily Change
Soybeans (\$/bu)	\$11.77	May-26	+13.4c
Soy Oil (c/lb)	72.26c	May-26	+0.35c
Soy Meal (\$/T)	\$333.80	May-26	+\$9.50

ICE London Feed Wheat – Settlement 27.04.2026		
Delivery Month	£/t	Daily Change
May-26	£182.90	+£0.90
Nov-26	£184.95	+£0.90
Jan-27	£188.10	+£0.90
Mar-27	£191.25	+£0.90

CBOT US Soy Beans & Soy Oil



Exchange Rates: GBP / USD & GBP / EUR



### THE UNITED OILSEEDS OSR REBOOT5

**Restore UK OSR Self Sufficiency – Boost Economic Growth – Reverse Biodiversity Declines – Level the Playing Field for UK Farmers**

**SAVE OUR YELLOW FIELDS! – [View the Campaign Here](#)**