

DAILY MARKET REPORT

MARKETS – DAILY COMMENTS & MARKET DRIVERS

On Wednesday, Aug'26 MATIF opened at €517.25, and traded between highs of €522.25 and lows of €513.25, before settling at €515.75, down €2.25 on Tuesday's settlement.

- On the CBOT, it was a mixed day across the three legs of the soy complex. Jul'26 soybeans fell 8.2c to settle at \$11.08/bu, soy oil fell 1.13c to settle at 69.46c/lb, whilst soymeal gained 70c to settle at \$303.6/t. **Price Impact - Mixed**
- On the Bursa Malaysia, Sep'26 crude palm oil fell 25RM to settle at 4,633RM. **Price Impact – Negative**
- On the Dalian, Sep'26 soybeans gained 3CNY to settle at 4,758CNY, soymeal fell 5CNY to settle at 2,943CNY, whilst soy oil fell 37CNY to settle at 8,345CNY. **Price Impact - Mixed**
- Nearby (Aug'26) Brent crude fell \$3.34 to settle at \$73.74/b. **Price Impact – Negative**
- Brent traded down to \$73.22/b yesterday, it's weakest level since Feb 27th the day before the US and Israel commenced strikes on Iran. The interim deal between the US and Iran appears to be holding, with shipping data showing three tankers carrying 5mb of crude exited the Strait of Hormuz bound for Asia yesterday.
- Benchmark European natural gas fell €1.14 to settle at €40.88/MWh (Jul'26). **Price Impact – Positive**
- LSEG polling places the 2026 US soybean area estimate at 85.369m/ acres, up from 84.7m/ acres in March's estimate. **Price Impact – Negative**
- LSEG polling places the 2026 US wheat area estimate at 43.858m/ acres, up from 43.775m/ acres in March's estimate. **Price Impact - Mixed**
- LSEG polling places the 2026 US corn area estimate at 94.992m/ acres, down from 95.338m/ acres in March's estimate. **Price Impact – Negative**
- Euronext (MATIF) commitment of traders data shows that rapeseed specs are now +57.7k lots long, this is down 5.92k lots since the previous week. **Price Impact - Mixed**
- US spring wheat conditions are 54% good-to-excellent, down from 55% last week, and unchanged on last year. **Price Impact - Mixed**
- US winter wheat conditions are 26% good-to-excellent, down from 27% last week, and down from 49% last year. **Price Impact – Positive**
- US winter wheat harvest is 40% complete so far, up from 25% last week, 18% last year, and above the 5yr average of 24%. **Price Impact - Mixed**

Hubbards Seeds – Cover, Companions, Forage, Trees & More

Whether it's cover crops ahead of a spring crop, a companion in your OSR, maize for silage, or trees & hedging for structure & biodiversity, we're here to support every part of your rotation.

01380 729200 ~ hello@hubbardsseeds.co.uk

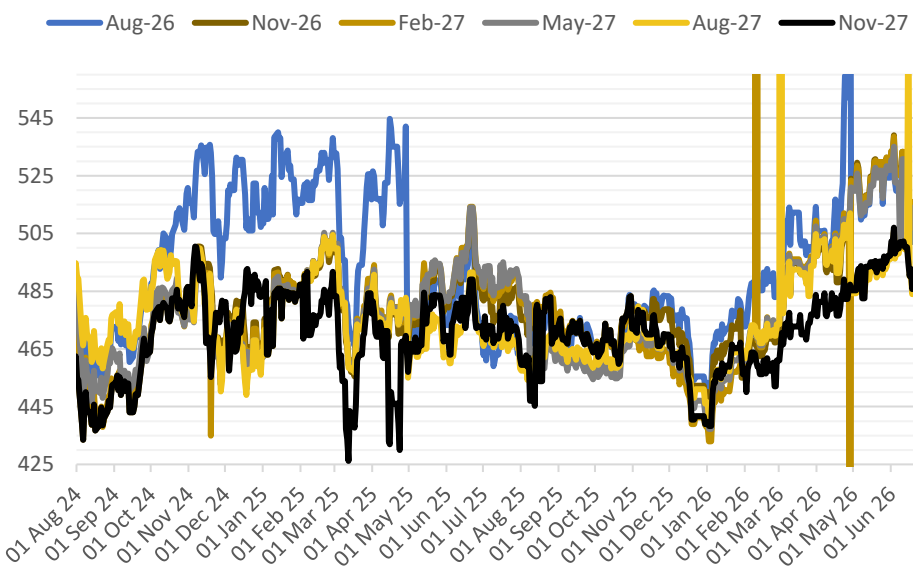
	Erith	Liverpool	Stratford	Berwick	Montrose
Aug-26	£444	£442	£443	£426	£422
Sep-26	£449	£447	£448	£430	£424
Oct-26	£451	£449	£450	£432	£426
Nov-26	£453	£451	£452	£434	£428
Dec-26	£454	£452	£453	£435	£429
Jan-27	£454	£452	£453	£435	£429

NO CARRY JAN-27 ONWARDS



MARKET TRENDS & CURRENCY

MATIF OSR Daily Settlement €/t



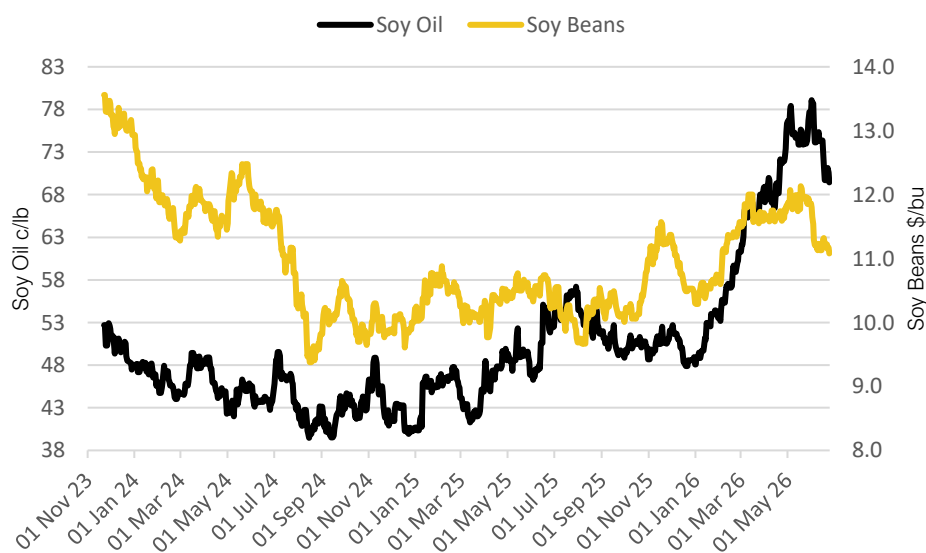
Nearby ICE London Feed Wheat Daily Settlement £/t



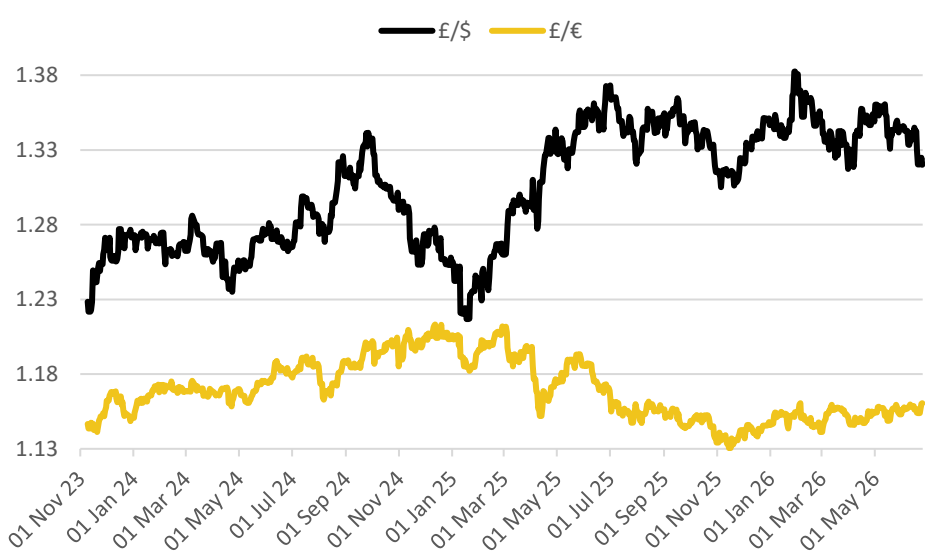
Contract	\$	Month	Daily Change
Soybeans (\$/bu)	\$11.08	Jul-26	-8.2c
Soy Oil (c/lb)	69.46c	Jul-26	-1.13c
Soy Meal (\$/T)	\$303.60	Jul-26	+\$0.70

Delivery Month	£/t	Daily Change
Nov-26	£181.50	+£1.25
Jan-27	£185.00	+£1.00
Mar-27	£188.50	+£0.75
May-27	£192.00	+£0.75

CBOT US Soy Beans & Soy Oil



Exchange Rates: GBP / USD & GBP / EUR



THE UNITED OILSEEDS OSR REBOOT5

Restore UK OSR Self Sufficiency – Boost Economic Growth – Reverse Biodiversity Declines – Level the Playing Field for UK Farmers

SAVE OUR YELLOW FIELDS! – [View the Campaign Here](#)