

DAILY MARKET REPORT

MARKETS – DAILY COMMENTS & MARKET DRIVERS

On Tuesday, Aug'26 MATIF opened at €513.50, and traded between highs of €518.75 and lows of €512, before settling at €518, up €6.25 on Monday's settlement.

- On the CBOT, it was a mixed day across the three legs of the soy complex. Jul'26 soybeans gained 1.2c to settle at \$11.17/bu, soyoil fell 0.56c to settle at 70.59c/lb, whilst soymeal gained \$3.1 to settle at \$302.9/t. **Price Impact – Mixed**
- On the Bursa Malaysia, Sep'26 crude palm oil fell 14RM to settle at 4,658RM. **Price Impact – Negative**
- On the Dalian, Sep'26 soybeans gained 34CNY to settle at 4,755CNY, soy meal gained 17CNY to settle at 2,948CNY, whilst soy oil gained 20CNY to settle at 8,382CNY. **Price Impact – Positive**
- Nearby (Aug'26) Brent crude fell 82c to settle at \$77.08/b. **Price Impact – Negative**
- Brent continues to fall as oil export flows through the Strait of Hormuz appear to normalise, the International Maritime Organization has reportedly received safety assurances which has allowed multiple ships trapped in the Persian Gulf since the outbreak of hostilities to leave.
- Benchmark European natural gas gained 13c to settle €42.01/MWh (Jul'26). **Price Impact – Mixed**
- EU commission data shows 25/26 EU OSR imports at 5.17Mmt so far this season, down from 7.39Mmt at the same time last season. **Price Impact – Mixed**
- EU commission data shows 25/26 EU soft wheat exports at 22.73Mmt so far this season, up from 21.22Mmt last season. **Price Impact – Mixed**
- SovEcon estimate 26/27 Russian wheat area at 25.8m/ha, down from 26.4m/ha in their previous estimate, and 26.9m/ha last season. **Price Impact – Positive**
- SovEcon estimate 26/27 Russian wheat production at 88.9Mmt, down from 90.3Mmt in their previous estimate, and 91.1Mmt last season. **Price Impact – Positive**

Hubbards Seeds – Cover, Companions, Forage, Trees & More

Whether it's cover crops ahead of a spring crop, a companion in your OSR, maize for silage, or trees & hedging for structure & biodiversity, we're here to support every part of your rotation.

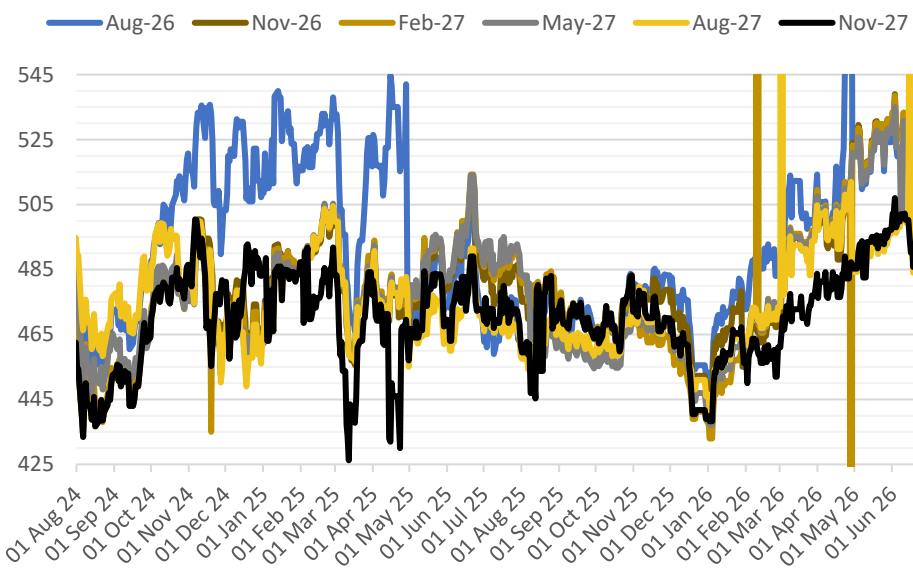
01380 729200 ~ hello@hubbardsseeds.co.uk

	Erith	Liverpool	Stratford	Berwick	Montrose	Whitehill / Murphy
Aug-26	£450	£448	£449	£432	£428	£422
Sep-26	£455	£453	£454	£436	£430	£424
Oct-26	£457	£455	£456	£438	£432	£426
Nov-26	£459	£457	£458	£440	£434	£428
Dec-26	£460	£458	£459	£441	£435	£429
Jan-27	£460	£458	£459	£441	£435	£429



MARKET TRENDS & CURRENCY

MATIF OSR Daily Settlement €/t



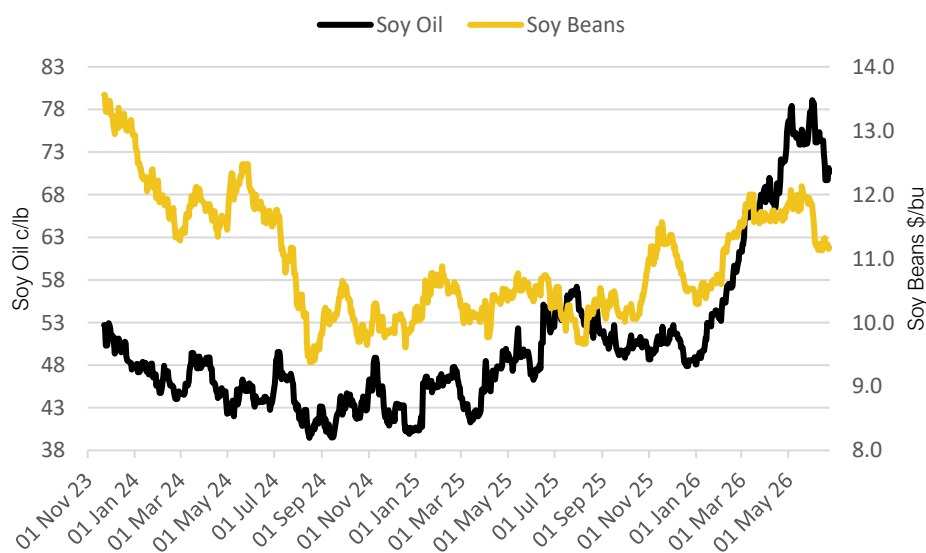
Nearby ICE London Feed Wheat Daily Settlement £/t



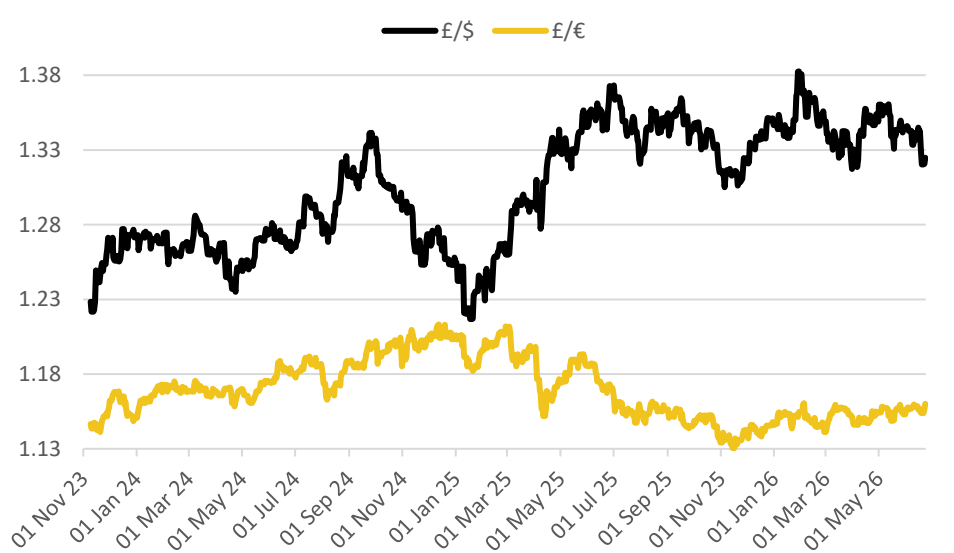
CBOT US Soy Complex – Settlement 23.06.2026			
Contract	\$	Month	Daily Change
Soybeans (\$/bu)	\$11.15	Jul-26	-7.00c
Soy Oil (c/lb)	71.15c	Jul-26	+1.46c
Soy Meal (\$/T)	\$299.80	Jul-26	-\$1.50

ICE London Feed Wheat – Settlement 23.06.2026		
Delivery Month	£/t	Daily Change
Nov-26	£180.85	+£2.70
Jan-27	£184.35	+£2.45
Mar-27	£187.85	+£2.20
May-27	£191.35	+£1.95

CBOT US Soy Beans & Soy Oil



Exchange Rates: GBP / USD & GBP / EUR



THE UNITED OILSEEDS OSR REBOOTS

Restore UK OSR Self Sufficiency – Boost Economic Growth – Reverse Biodiversity Declines – Level the Playing Field for UK Farmers

SAVE OUR YELLOW FIELDS! – [View the Campaign Here](#)