

# DAILY MARKET REPORT

## MARKETS – DAILY COMMENTS & MARKET DRIVERS

**On Monday, Aug'26 MATIF opened at €507.25, and traded between highs of €513.25 and lows of €506.75, before settling at €511.75, up €7.5 on Friday's settlement.**

- On the CBOT, it was a mixed day across the three legs of the soy complex. Jul'26 soybeans fell 7c to settle at \$11.15/bu, soy oil gained 1.46c to settle at 71.17c/lb, whilst soymeal fell \$1.5 to settle at \$299.8/t. **Price Impact – Mixed**
- On the Bursa Malaysia, Sep'26 crude palm oil gained 26RM to settle at 4,672RM. **Price Impact – Positive**
- On the Dalian, Sep'26 soybeans gained 33CNY to settle at 4,721CNY, soymeal settled unchanged at 2,931CNY, whilst soy oil fell 14CNY to settle at 8,362CNY. **Price Impact – Mixed**
- Nearby (Aug'26) Brent crude fell \$2.67 to settle at \$77.9/b. **Price Impact – Negative**
- Oil prices fell by over 3% on Monday after the USA waived sanctions on Iran for up to 60 days following initial peace negotiations between the two countries. Ship-tracking data has shown tankers carrying nearly 2m/b of crude oil passed through the Strait of Hormuz on Monday, further pressuring the benchmark price yesterday.
- Benchmark European natural gas fell 20c to settle at €41.88/MWh (Jul'26). **Price Impact – Mixed**
- MARS estimate 2026 EU OSR yields at 3.18t/ha, down from 3.19t/ha in last month's estimate. **Price Impact – Positive**
- MARS estimate 2026 EU wheat yields at 6t/ha, down from 6.01t/ha in last month's estimate. **Price Impact – Positive**
- MARS estimate 2026 EU maize yields at 7.38t/ha, up from 7.3tha in last month's estimate. **Price Impact – Negative**
- Argus estimate 26/27 Ukrainian wheat production at 24.1Mmt, up from 23.5Mmt in their previous estimate, and up 3.4% on last year. **Price Impact – Mixed**
- Abiove estimate 2026 Brazilian soybean exports at 114.1Mmt, unchanged from last month's estimate. **Price Impact – Mixed**
- US soybean conditions are estimated at 66% good to excellent, unchanged on last week, and unchanged on last year. **Price Impact – Mixed**

### Hubbards Seeds – Cover, Companions, Forage, Trees & More

Whether it's cover crops ahead of a spring crop, a companion in your OSR, maize for silage, or trees & hedging for structure & biodiversity, we're here to support every part of your rotation.

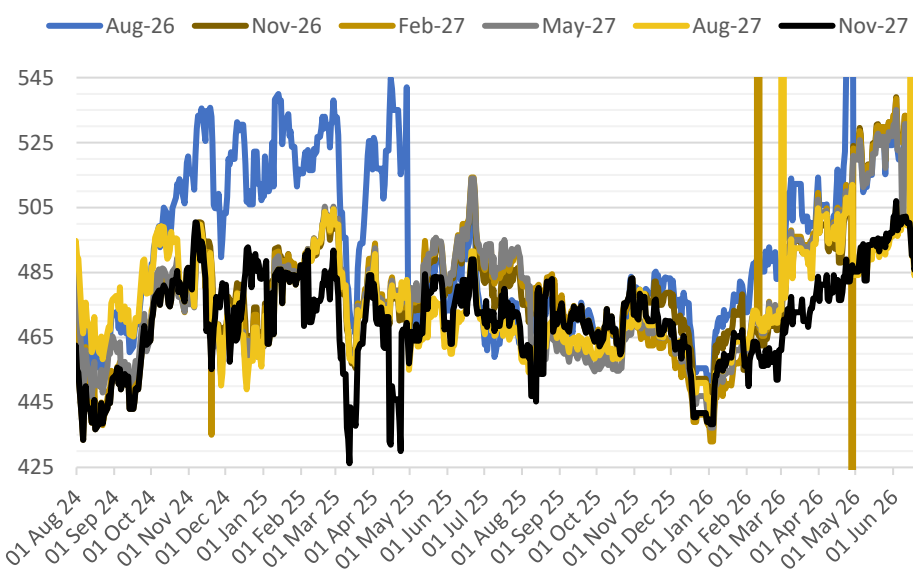
01380 729200 ~ [hello@hubbardsseeds.co.uk](mailto:hello@hubbardsseeds.co.uk)

	Erith	Liverpool	Stratford	Berwick	Montrose	Whitehill / Murphy
<b>Aug-26</b>	£450	£448	£449	£432	£428	£422
<b>Sep-26</b>	£455	£453	£454	£436	£430	£424
<b>Oct-26</b>	£457	£455	£456	£438	£432	£426
<b>Nov-26</b>	£459	£457	£458	£440	£434	£428
<b>Dec-26</b>	£460	£458	£459	£441	£435	£429
<b>Jan-27</b>	£460	£458	£459	£441	£435	£429



### MARKET TRENDS & CURRENCY

MATIF OSR Daily Settlement €/t



Nearby ICE London Feed Wheat Daily Settlement £/t



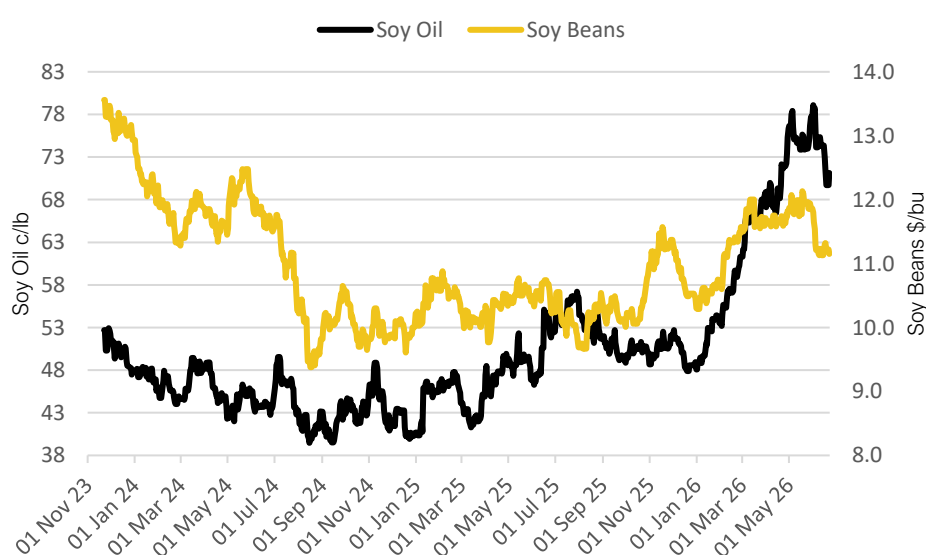
CBOT US Soy Complex – Settlement 22.06.2026

Contract	\$	Month	Daily Change
Soybeans (\$/bu)	\$11.15	Jul-26	-7.00c
Soy Oil (c/lb)	71.15c	Jul-26	+1.46c
Soy Meal (\$/T)	\$299.80	Jul-26	-\$1.50

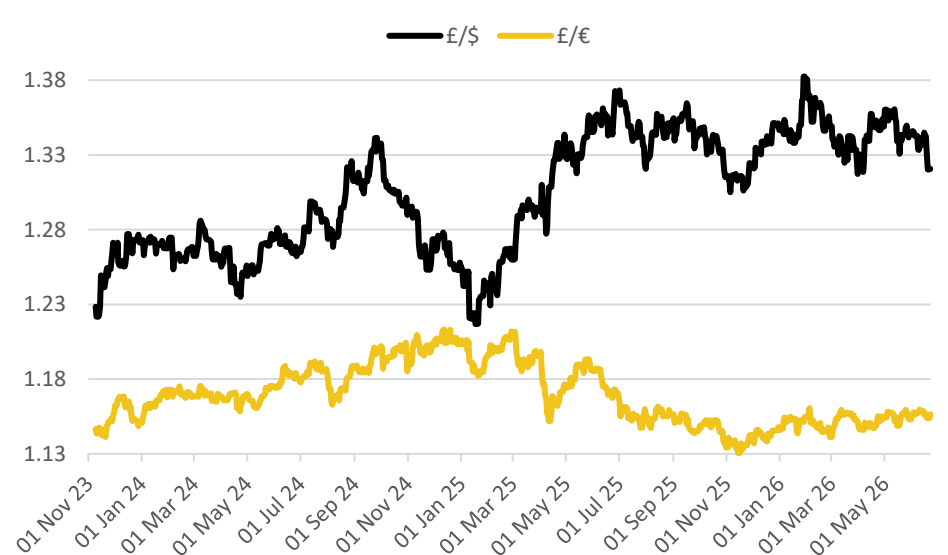
ICE London Feed Wheat – Settlement 22.06.2026

Delivery Month	£/t	Daily Change
Nov-26	£180.85	+£2.70
Jan-27	£184.35	+£2.45
Mar-27	£187.85	+£2.20
May-27	£191.35	+£1.95

CBOT US Soy Beans &amp; Soy Oil



Exchange Rates: GBP / USD &amp; GBP / EUR



### THE UNITED OILSEEDS OSR REBOOT5

**Restore UK OSR Self Sufficiency – Boost Economic Growth – Reverse Biodiversity Declines – Level the Playing Field for UK Farmers**

**SAVE OUR YELLOW FIELDS! – [View the Campaign Here](#)**