



DAILY MARKET REPORT

MARKETS – DAILY COMMENTS & MARKET DRIVERS

On Wednesday, Feb-26 MATIF opened at €473.25 and traded between highs of €480 and lows of €473.25, before settling at €478.25, up €4 on Tuesday’s settlement.

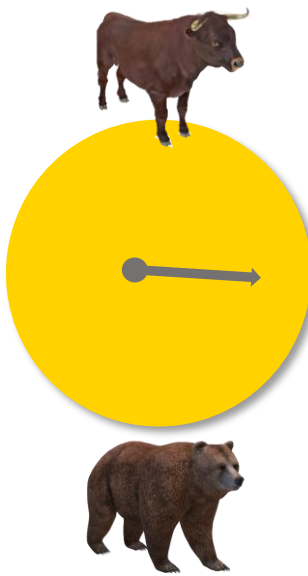
- On the CBOT, it was a mixed day across the 3 legs of the soy complex. Mar’26 soybeans gained 11.4c to settle at \$10.64/bu, soy oil gained 1.45c to settle at 54.01c/lb, whilst soy meal fell 20c to settle at \$291.4/t. **Price Impact – Mixed**
- On the Bursa Malaysia, Mar’26 crude palm oil gained 58RM to settle at 4,142RM. **Price Impact – Positive**
- On the Dalian, May’26 soybeans gained 16CNY to settle at 4,318CNY, soymeal gained 22CNY to settle at 2,749CNY, whilst soy oil gained 48CNY to settle at 8,088CNY. **Price Impact – Positive**
- Nearby (Mar’26) Brent crude gained 32c to settle at \$65.24/b. **Price Impact – Positive**
- News that production at two large Kazakh oil fields looks set to be paused for 7-10 days lent support to Brent yesterday, along with news that Venezuelan oil exports are increasing at a slower than expected rate.
- Benchmark European natural gas gained €3.32 to settle at €39.2/MWh (Feb’26). **Price Impact – Negative**
- AgroConsult report that ice storms expected in South and Eastern Ukraine may damage the OSR crop there. **Price Impact – Mixed**
- It is understood that China has now purchased 12Mmt of US soybeans, the amount agreed in negotiations between the two countries. It is understood that not all sales have been reported by the USDA. It remains to be seen whether China will make any further purchases of US soybeans now this volume has been reached. Brazilian new crop soybeans are now available and continue to be cheaper than US soybeans. **Price Impact – Mixed**

Hubbards Seeds – Cover, Companions, Forage, Trees & More

Whether it’s cover crops ahead of a spring crop, a companion in your OSR, maize for silage, or trees & hedging for structure & biodiversity, we’re here to support every part of your rotation.

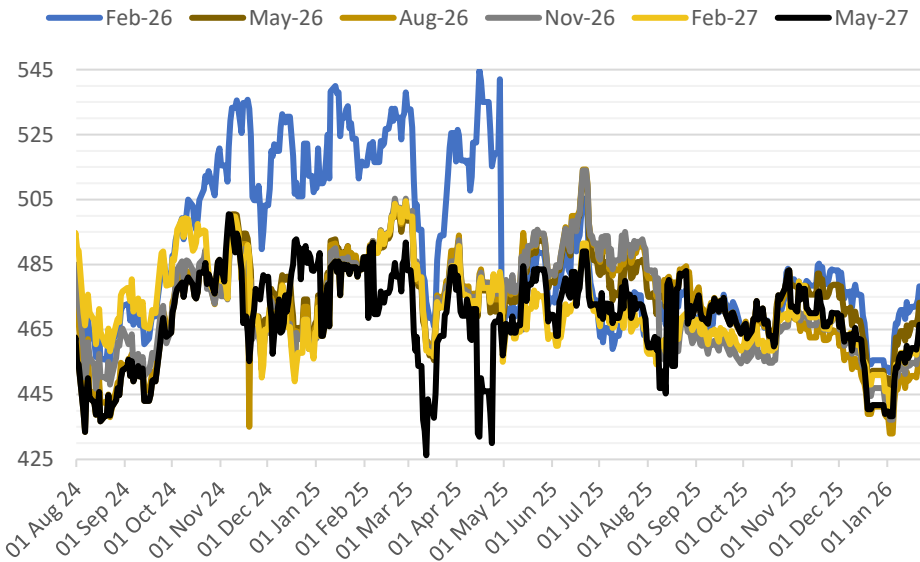
01380 729200 ~ hello@hubbardsseeds.co.uk

	Erith	Liverpool	Stratford	Berwick	Montrose	Whitehill / Murphy
Jan-26	£429	£429	£429	£414	£409	POA
Feb-26	£430	£430	£430	£415	£410	POA
Mar-26	£430	£430	£430	£415	£410	POA
Apr-26	£430	£430	£430	£415	£410	POA
May-26	£430	£430	£430	£415	£410	POA
Aug-26	£404	£404	£404	£389	£384	£379
Sep-26	£408	£408	£408	£393	£386	£381
Oct-26	£410	£410	£410	£395	£388	£383



MARKET TRENDS & CURRENCY

MATIF OSR Daily Settlement €/t



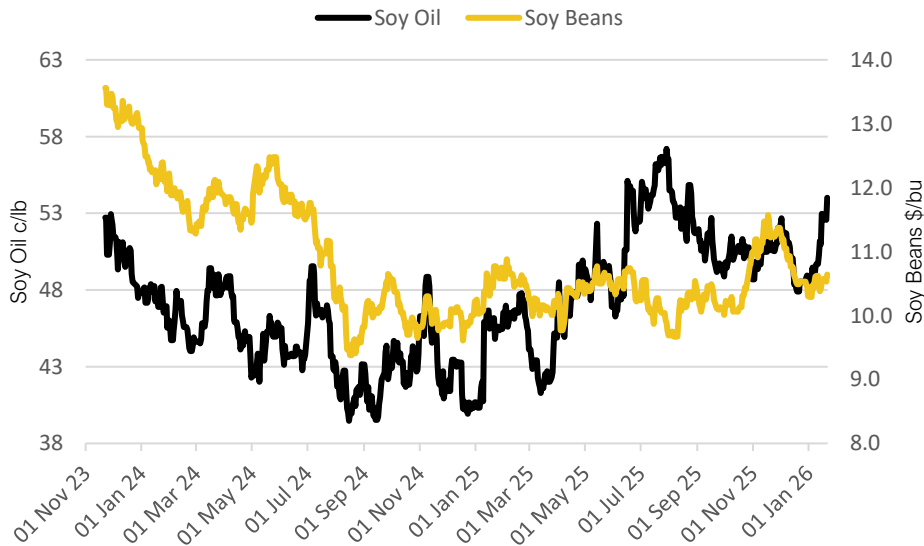
Nearby ICE London Feed Wheat Daily Settlement £/t



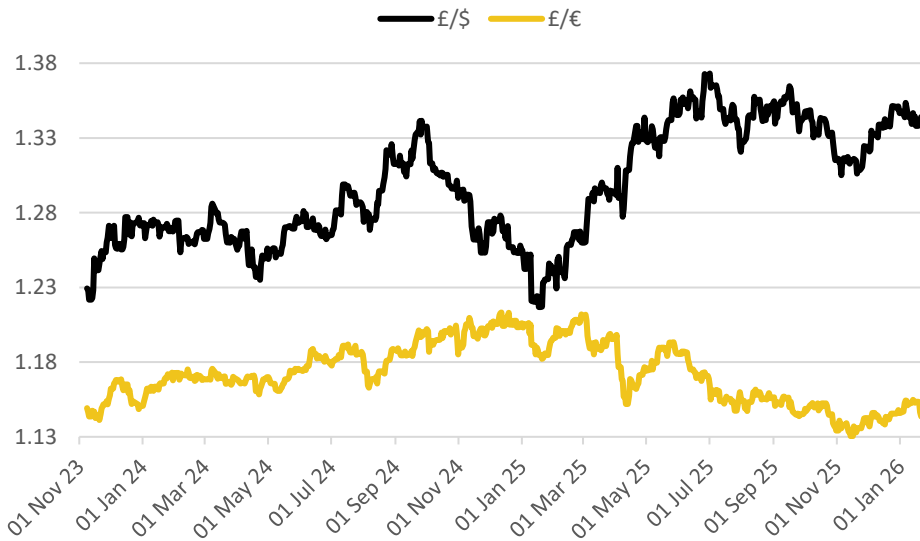
CBOT US Soy Complex – Settlement 21.01.2026			
Contract	\$	Month	Daily Change
Soybeans (\$/bu)	\$10.64	Mar-26	+11.4c
Soy Oil (c/lb)	54.01c	Mar-26	+1.45c
Soy Meal (\$/T)	\$291.40	Mar-26	-\$0.20

ICE London Feed Wheat – Settlement 21.01.2026		
Delivery Month	£/t	Daily Change
Jan-26	£160.10	-£0.20
May-26	£167.10	-£0.40
Nov-26	£170.65	-£0.45
Jan-27	£174.00	unch

CBOT US Soy Beans & Soy Oil



Exchange Rates: GBP / USD & GBP / EUR



THE UNITED OILSEEDS OSR REBOOT

Restore UK OSR Self Sufficiency – Boost Economic Growth – Reverse Biodiversity Declines – Level the Playing Field for UK Farmers

SAVE OUR YELLOW FIELDS! – [View the Campaign Here](#)