

DAILY MARKET REPORT

MARKETS – DAILY COMMENTS & MARKET DRIVERS

On Wednesday, Aug'26 MATIF opened at €528.25 and traded between highs of €532.50 and lows of €524.25, before settling at €526.75, down €1.75 on Tuesday's settlement.

- On the CBOT, all three legs of the soy complex settled lower yesterday. Jul'26 soybeans fell 9.6c to settle at \$11.99/bu, soy oil fell 0.78c to settle at 74.66c/lb, whilst soymeal fell \$1.4 to settle at \$330.9/t. **Price Impact – Negative**
- On the Bursa Malaysia, Jul'26 crude palm oil fell 15RM to settle at 4,556RM. **Price Impact – Negative**
- On the Dalian, Jul'26 soybeans fell 45CNY to settle at 4,732CNY, soymeal fell 19CNY to settle at 2,838CNY, whilst soy oil fell 33CNY to settle at 8,532CNY. **Price Impact – Negative**
- Nearby (Jul'26) Brent crude fell \$6.26 to settle at \$105.02/b. **Price Impact – Negative**
- Brent extended losses to a second consecutive session yesterday, following statements by President Trump that negotiations with Iran were nearing completion, meanwhile Tehran has said that the Iranian Ministry of Foreign Affairs is reviewing US proposals received via mediator Pakistan.
- Benchmark European natural gas fell €2.39 to settle at €49.43/MWh (Jun'26). **Price Impact – Positive**
- German OSR area expected to be 4.9% up versus last year, as per Bloomberg. **Price Impact – Negative**
- DRV estimate 2026 German OSR production at 4.14Mmt, up 4.3% on last year. **Price Impact – Negative**
- Abiove estimate 2026 Brazilian soybean exports at 114.1Mmt, up from 113.6Mmt in previous estimate. **Price Impact – Negative**
- LSEG estimate 25/26 Malaysian palm oil production at 19.85Mmt, up 1% from last month. **Price Impact – Negative**
- LSEG estimate 26/27 Ukrainian wheat production at 22.8Mmt, unchanged on last month. **Price Impact – Mixed**
- LSEG estimate 26/27 Russian wheat production at 85.5Mmt, unchanged on last month. **Price Impact – Mixed**

Hubbards Seeds – Cover, Companions, Forage, Trees & More

Whether it's cover crops ahead of a spring crop, a companion in your OSR, maize for silage, or trees & hedging for structure & biodiversity, we're here to support every part of your rotation.

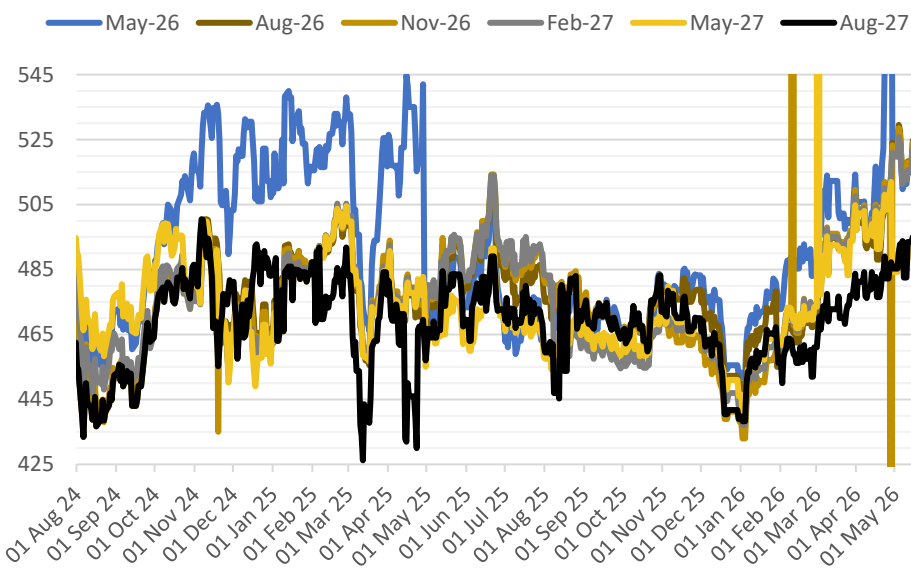
01380 729200 ~ hello@hubbardsseeds.co.uk

	Erith	Liverpool	Stratford	Berwick	Montrose	Whitehill / Murphy
Aug-26	£454	£452	£453	£436	£432	£426
Sep-26	£459	£457	£458	£440	£434	£428
Oct-26	£461	£459	£460	£442	£436	£430
Nov-26	£463	£461	£462	£444	£438	£432
Dec-26	£464	£462	£463	£445	£439	£433



MARKET TRENDS & CURRENCY

MATIF OSR Daily Settlement €/t



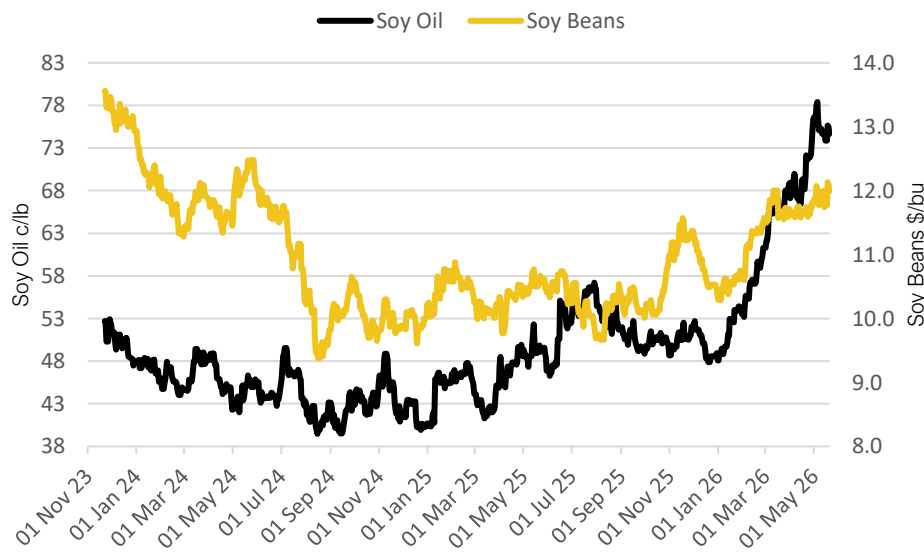
Nearby ICE London Feed Wheat Daily Settlement £/t



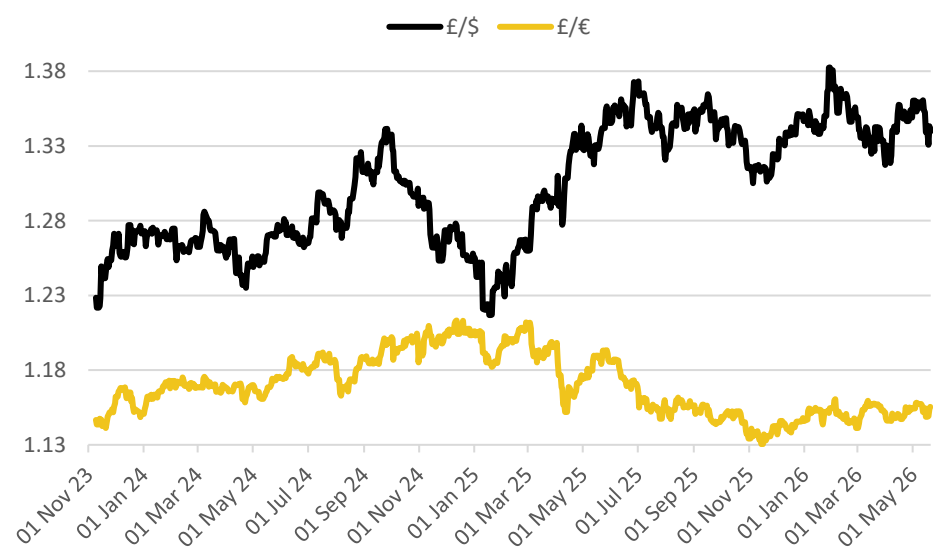
CBOT US Soy Complex – Settlement 20.05.2026			
Contract	\$	Month	Daily Change
Soybeans (\$/bu)	\$11.99	Jul-26	-9.6c
Soy Oil (c/lb)	74.66c	Jul-26	-0.78c
Soy Meal (\$/T)	\$330.90	Jul-26	-\$1.40

ICE London Feed Wheat – Settlement 20.05.2026		
Delivery Month	£/t	Daily Change
May-26	£188.60	+£0.35
Nov-26	£190.60	+£0.35
Jan-27	£193.70	+£0.35
Mar-27	£196.80	+£0.35

CBOT US Soy Beans & Soy Oil



Exchange Rates: GBP / USD & GBP / EUR



THE UNITED OILSEEDS OSR REBOOT5

Restore UK OSR Self Sufficiency – Boost Economic Growth – Reverse Biodiversity Declines – Level the Playing Field for UK Farmers

SAVE OUR YELLOW FIELDS! – [View the Campaign Here](#)