

DAILY MARKET REPORT

MARKETS – DAILY COMMENTS & MARKET DRIVERS

On Monday, May-26 MATIF opened at €512 and traded between highs of €512 and lows of €503.25, before settling at €508.25, up €2.5 on Friday's settlement.

- On the CBOT, it was a mixed day across the three legs of the soy complex. May'26 soybeans fell 1.4c to settle at \$11.65/bu, soy oil gained 1.47c to settle at 69.63c/lb, whilst soymeal fell \$6.7 to settle at \$325.1/t. **Price Impact – Mixed**
- On the Bursa Malaysia, Jun'26 crude palm oil gained 65RM to settle at 4,487RM. **Price Impact – Positive**
- On the Dalian, May'26 soybeans gained 64CNY to settle at 4,844CNY, soymeal fell 1CNY to settle at 2,818CNY, soy oil gained 82CNY to settle at 8,527CNY. **Price Impact – Mixed**
- Nearby (Jun'26) Brent crude gained \$5.1 to settle at \$95.48/b. **Price Impact – Positive**
- Brent surged yesterday following news that Iran has once again shut the Strait of Hormuz, this followed shortly after the US fired at and seized an Iranian cargo ship as part of its blockade of the Strait of Hormuz.
- Benchmark European natural gas gained €1.52 to settle at €40.29/MWh (May'26). **Price Impact – Negative**
- Mar'26 Chinese soy imports from US origins reached 1.85mt, up from 1.49Mmt in Jan-Feb'26, but down from 2.44Mmt in Mar'25. **Price Impact – Mixed**
- AgRural estimate 25/26 Brazilian soybeans area at 92% completion so far. **Price Impact – Mixed**
- Safras estimate 25/26 Brazilian soybeans production at 178.11Mmt, up from 177.72Mmt previously. **Price Impact – Negative**
- GAPKI estimate Feb'26 Indonesian palm oil exports at 3.3Mmt, up 17% on Feb'25. **Price Impact – Negative**
- US soybean area is 12% planted so far, this is up from 6% last week, 7% this time last year, and above the 5yr average of 5%. **Price Impact – Negative**
- SovEcon estimate Apr'26 Russian wheat exports at 4Mmt, down from 4.7Mmt last month but up from 2.4Mmt in Apr'25. **Price Impact – Mixed**

Hubbards Seeds – Cover, Companions, Forage, Trees & More

Whether it's cover crops ahead of a spring crop, a companion in your OSR, maize for silage, or trees & hedging for structure & biodiversity, we're here to support every part of your rotation.

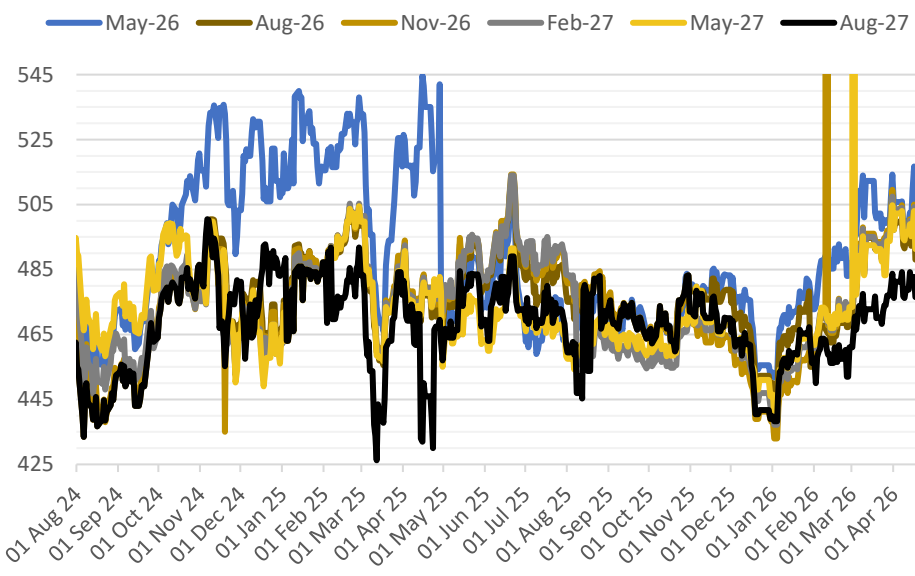
01380 729200 ~ hello@hubbardsseeds.co.uk

	Erith	Liverpool	Stratford	Berwick	Montrose	Whitehill / Murphy
Aug-26	£437	£435	£436	£419	£415	£409
Sep-26	£442	£440	£441	£423	£417	£411
Oct-26	£444	£442	£443	£425	£419	£413
Nov-26	£446	£444	£445	£427	£421	£415



MARKET TRENDS & CURRENCY

MATIF OSR Daily Settlement €/t



Nearby ICE London Feed Wheat Daily Settlement £/t



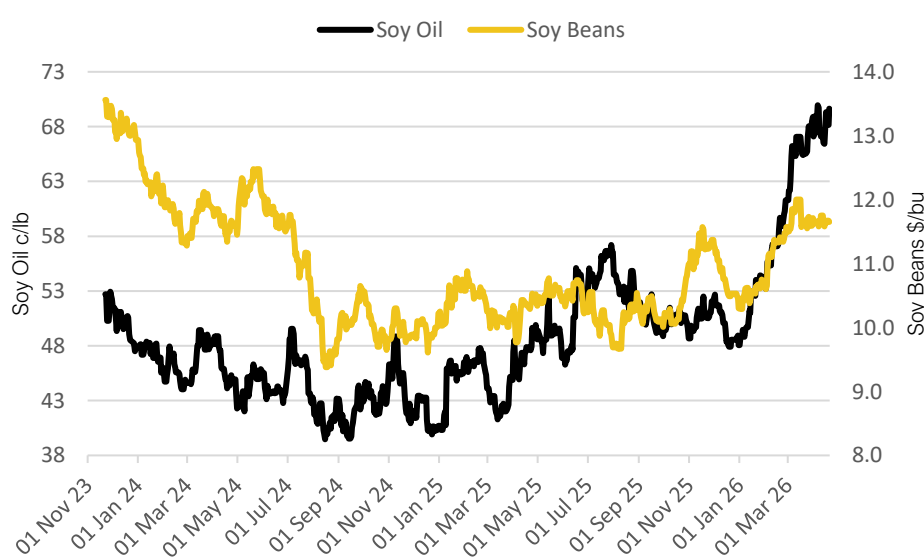
CBOT US Soy Complex – Settlement 20.04.2026

Contract	\$	Month	Daily Change
Soybeans (\$/bu)	\$11.67	May-26	+9.00c
Soy Oil (c/lb)	67.60c	May-26	+1.16c
Soy Meal (\$/T)	\$334.4	May-26	+\$4.70

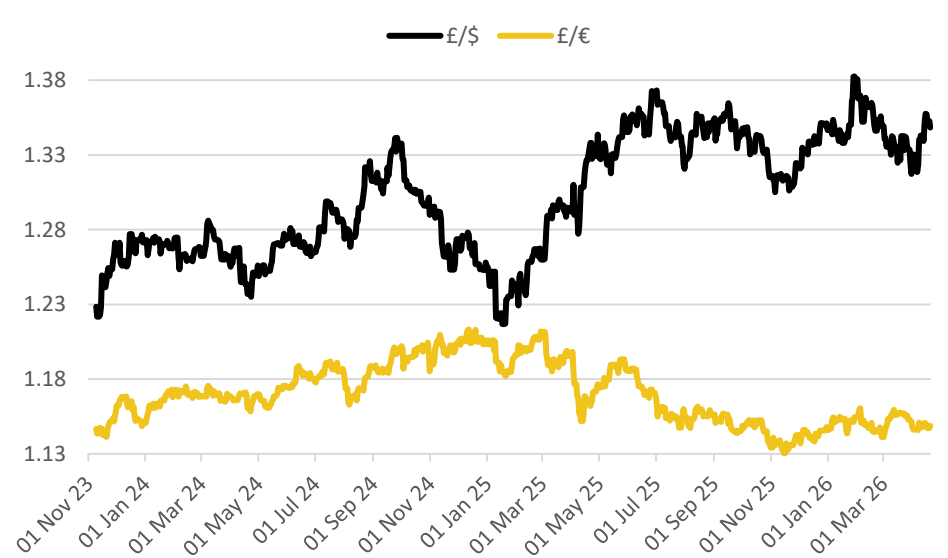
ICE London Feed Wheat – Settlement 20.04.2026

Delivery Month	£/t	Daily Change
May-26	£176.80	+£1.20
Nov-26	£180.55	-£1.10
Jan-27	£183.60	-£1.10
Mar-27	£186.65	-£1.10

CBOT US Soy Beans & Soy Oil



Exchange Rates: GBP / USD & GBP / EUR



THE UNITED OILSEEDS OSR REBOOT5

Restore UK OSR Self Sufficiency – Boost Economic Growth – Reverse Biodiversity Declines – Level the Playing Field for UK Farmers

SAVE OUR YELLOW FIELDS! – [View the Campaign Here](#)