

# DAILY MARKET REPORT

## MARKETS – DAILY COMMENTS & MARKET DRIVERS

**On Monday, Aug'26 MATIF opened at €515.25 and traded between highs of €515.50 and lows of €509.50, before settling at €513.25, down €9 on Friday's settlement.**

- On the CBOT, all three legs of the soy complex settled higher. Jul'26 soybeans gained 5.6c to settle at \$11.19/bu, soy oil gained 0.09c to settle at 74.37c/lb, whilst soymeal gained 70c to settle at \$302/t. **Price Impact – Positive**
- On the Bursa Malaysia, Aug'26 crude palm oil fell 24RM to settle at 4,451RM. **Price Impact – Negative**
- On the Dalian, Sep'26 soybeans fell 49CNY to settle at 4,740CNY, soymeal settled unchanged at 2,938CNY, soy oil fell 13CNY to settle at 8,312CNY. **Price Impact – Mixed**
- Nearby (Aug'26) Brent crude fell \$4.16 to settle at \$83.17/b. **Price Impact – Negative**
- Brent fell nearly 5% on Monday following news that the Americans and Iran announced a Memorandum of Understanding to bring an end to the conflict in the gulf, however questions remain over the exact content and nature of the agreement. A formal signing is expected to take place in Geneva on Friday.
- Benchmark European natural gas fell €4.27 to settle at €42.51/MWh (Jul'26). **Price Impact – Positive**
- The Australian weather bureau has announced that El-Nino is now underway in the tropic Pacific. **Price Impact – Mixed**
- NOPA estimate May'26 US soybean crushings at 208.88m/bu, below estimates of 216.02m/bu, down from 211.86m/bu in Apr'26 but up from 192.83m/bu last year. **Price Impact – Mixed**
- US soybean crop conditions are currently 66% good-to-excellent, as expected, up from 65% last week, the up on the 5yr average of 64%. **Price Impact – Negative**
- Argus estimate 2026 Romanian wheat production at 13.86Mmt, a new record if realised and up from 13Mmt in 2025. **Price Impact – Negative**

### Hubbards Seeds – Cover, Companions, Forage, Trees & More

Whether it's cover crops ahead of a spring crop, a companion in your OSR, maize for silage, or trees & hedging for structure & biodiversity, we're here to support every part of your rotation.

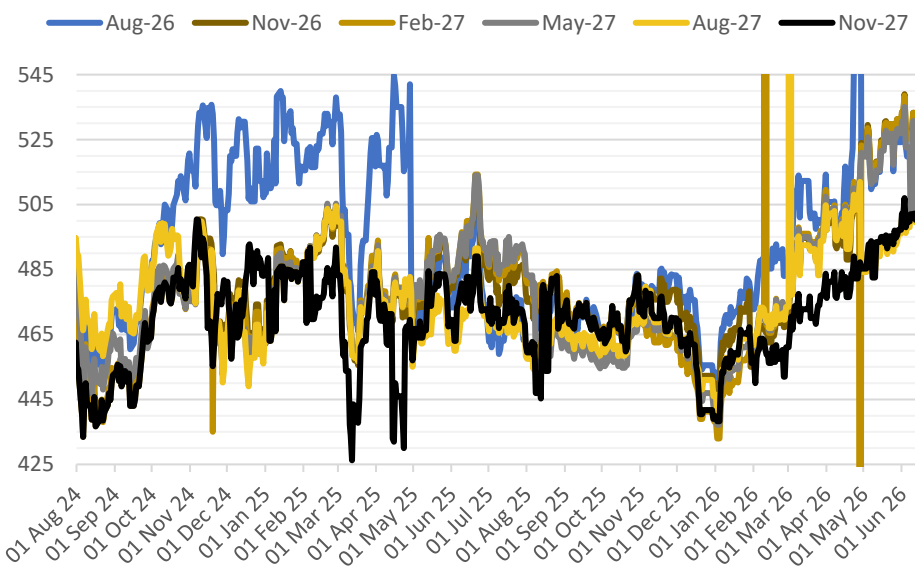
01380 729200 ~ hello@hubbardsseeds.co.uk

	Erith	Liverpool	Stratford	Berwick	Montrose	Whitehill / Murphy
<b>Aug-26</b>	£443	£441	£442	£425	£421	£415
<b>Sep-26</b>	£448	£446	£447	£429	£423	£417
<b>Oct-26</b>	£450	£448	£449	£431	£425	£419
<b>Nov-26</b>	£452	£450	£451	£433	£427	£421
<b>Dec-26</b>	£453	£451	£452	£434	£428	£422
<b>Jan-27</b>	£453	£451	£452	£434	£428	£422



### MARKET TRENDS & CURRENCY

MATIF OSR Daily Settlement €/t



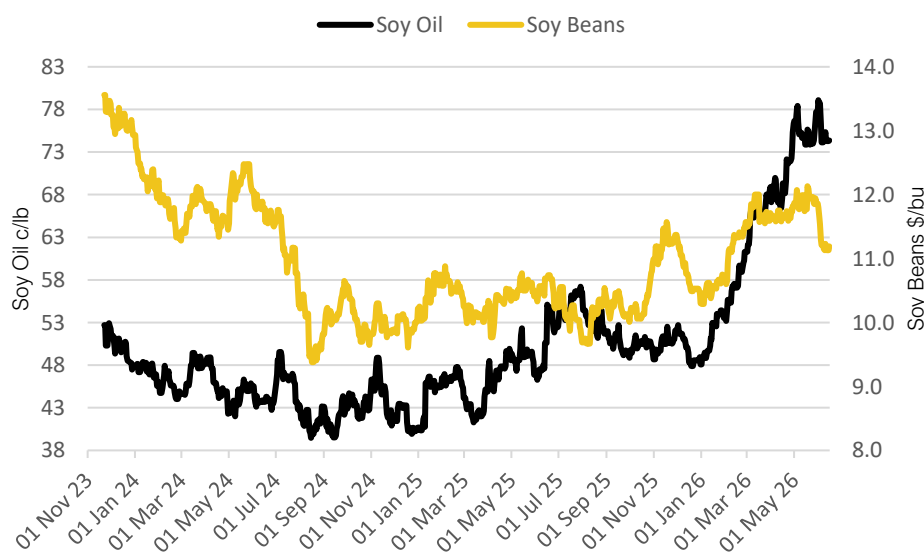
Nearby ICE London Feed Wheat Daily Settlement £/t



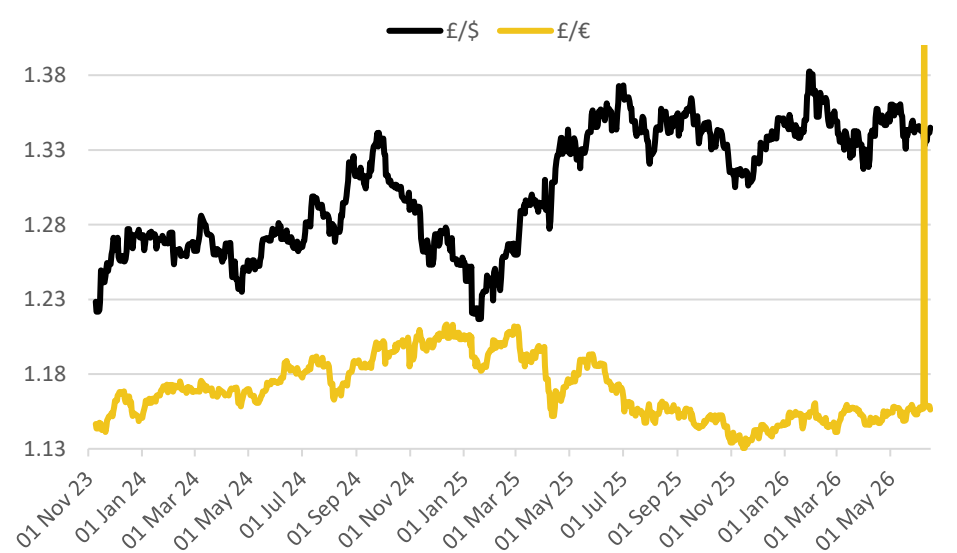
Contract	\$	Month	Daily Change
Soybeans (\$/bu)	\$11.19	Jul-26	+5.6c
Soy Oil (c/lb)	74.37c	Jul-26	+0.09c
Soy Meal (\$/T)	\$302.00	Jul-26	+70c

Delivery Month	£/t	Daily Change
Nov-26	£177.25	-£2.15
Jan-27	£180.50	-£2.15
Mar-27	£184.00	-£2.15
May-27	£187.50	-£2.15

CBOT US Soy Beans & Soy Oil



Exchange Rates: GBP / USD & GBP / EUR



### THE UNITED OILSEEDS OSR REBOOT5

**Restore UK OSR Self Sufficiency – Boost Economic Growth – Reverse Biodiversity Declines – Level the Playing Field for UK Farmers**

**SAVE OUR YELLOW FIELDS! – [View the Campaign Here](#)**