

DAILY MARKET REPORT

MARKETS – DAILY COMMENTS & MARKET DRIVERS

On Wednesday, May-26 MATIF opened at €500.75, and traded between highs of €511 and lows of €499.25, before settling at €509.25, up €9.25 on Tuesday's settlement.

- On the CBOT, all three legs of the soy complex settled up yesterday. May'26 soybeans gained 9c to settle at \$11.67/bu, soy oil gained 1.16c to settle at 67.60c/lb, whilst soymeal gained \$4.7 to settle at \$334.4/t. **Price Impact – Positive**
- On the Bursa Malaysia, May'26 crude palm oil gained 6RM to settle at 4,426RM. **Price Impact – Positive**
- On the Dalian, May'26 soybeans fell 6CNY to settle at 4,793CNY, soymeal gained 7CNY to settle at 2,844CNY, whilst soy oil gained 30CNY to settle at 8,453CNY. **Price Impact – Mixed**
- Nearby (Jun'26) Brent crude gained 14c to settle at \$94.93/b. **Price Impact – Mixed**
- Oil traded sideways yesterday as traders question whether the resumption of peace talks between the US and Iran will yield any positive developments. Officials are understood to be debating whether to regroup in Pakistan for further talks as soon as the weekend.
- Benchmark European natural gas fell €1.97 to settle at €41.4/MWh (May'26). **Price Impact – Positive**
- German Co-operatives estimate 2026 German winter OSR production at 4.154Mmt, up from 4.122Mmt last month and up 4.5% on last year. **Price Impact – Negative**
- LSEG notes that expected dry weather in Australia looks beneficial for wheat and canola planting. **Price Impact – Negative**
- Meanwhile, in the US Midwest, there are talks of unexpected rains causing planting delays. **Price Impact – Mixed**
- NOPA data showed Mar'26 US soybean crush at 22.6.161m/bu (2nd largest month on record), below estimates of 229.978m/bu, up from 208.785m/bu last month, and 194.511m/bu last year. **Price Impact – Positive**
- ANEC estimate Apr'26 Brazilian soybean exports at 16.67Mmt, up from 13.5Mmt last year. **Price Impact – Negative**

Hubbards Seeds – Cover, Companions, Forage, Trees & More

Whether it's cover crops ahead of a spring crop, a companion in your OSR, maize for silage, or trees & hedging for structure & biodiversity, we're here to support every part of your rotation.

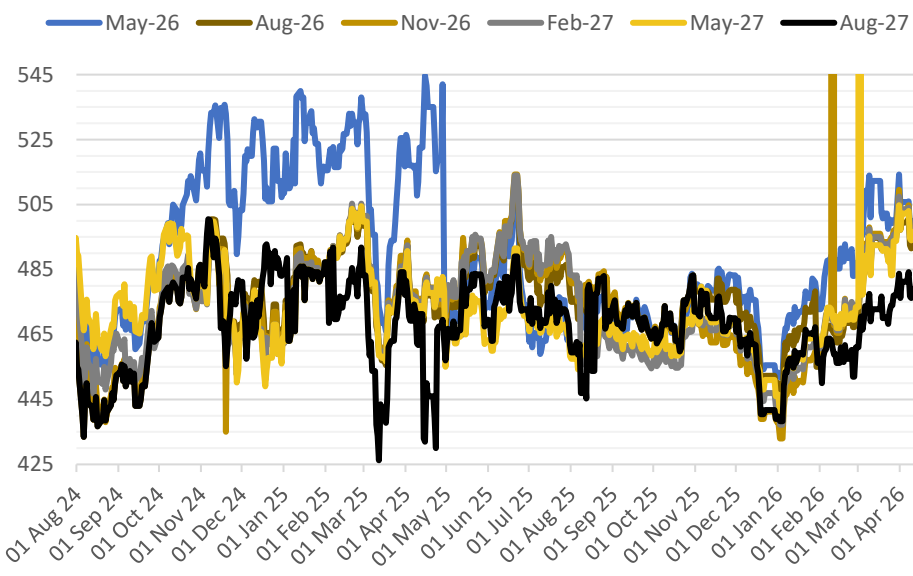
01380 729200 ~ hello@hubbardsseeds.co.uk

	Erith	Liverpool	Stratford	Berwick	Montrose	Whitehill / Murphy
Aug-26	£439	£437	£437	£421	£417	£411
Sep-26	£443	£441	£441	£425	£419	£413
Oct-26	£445	£443	£443	£427	£421	£415
Nov-26	£447	£445	£445	£429	£423	£417



MARKET TRENDS & CURRENCY

MATIF OSR Daily Settlement €/t



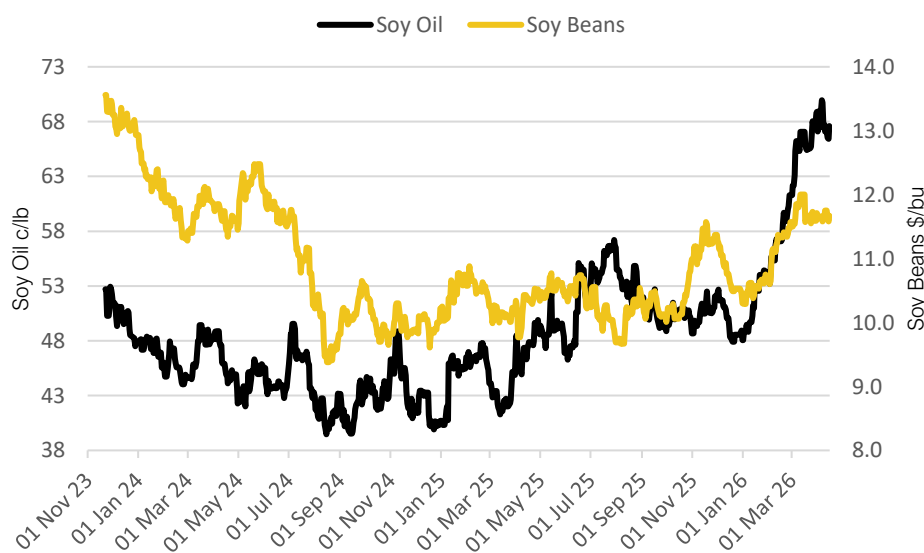
Nearby ICE London Feed Wheat Daily Settlement £/t



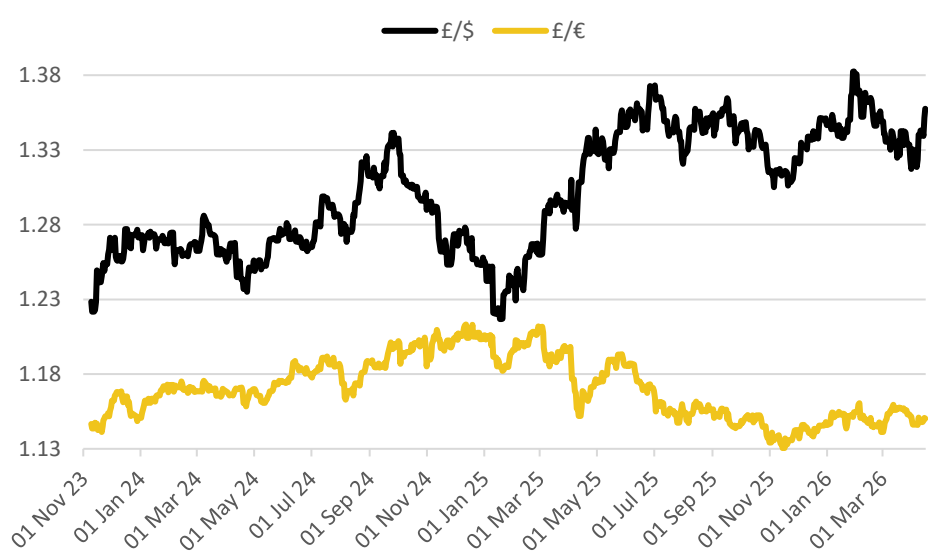
Contract	\$	Month	Daily Change
Soybeans (\$/bu)	\$11.67	May-26	+9.00c
Soy Oil (c/lb)	67.60c	May-26	+1.16c
Soy Meal (\$/T)	\$334.4	May-26	+\$4.70

Delivery Month	£/t	Daily Change
May-26	£176.80	+£1.20
Nov-26	£180.55	-£1.10
Jan-27	£183.60	-£1.10
Mar-27	£186.65	-£1.10

CBOT US Soy Beans & Soy Oil



Exchange Rates: GBP / USD & GBP / EUR



THE UNITED OILSEEDS OSR REBOOT5

Restore UK OSR Self Sufficiency – Boost Economic Growth – Reverse Biodiversity Declines – Level the Playing Field for UK Farmers

SAVE OUR YELLOW FIELDS! – [View the Campaign Here](#)