

DAILY MARKET REPORT

MARKETS – DAILY COMMENTS & MARKET DRIVERS

On Monday, Aug'26 MATIF opened at €514.75, and traded between highs of €519.50 and lows of €512 before settling at €515 up €3.75 on Friday's settlement.

- On the CBOT, it was a mixed day across the three legs of the soy complex. May'26 soybeans gained 5.4c to settle at \$11.99/bu, soy oil fell 0.58c to settle at 74.68c/lb, whilst soymeal gained \$5.4 to settle at \$327.9/t. **Price Impact – Mixed**
- On the Bursa Malaysia, Jul'26 crude palm oil gained 11RM to settle at 4,516RM. **Price Impact – Positive**
- On the Dalian, May'26 soybeans fell 29CNY to settle at 4,749CNY, soymeal gained 15CNY to settle at 2,832CNY, whilst soy oil gained 85CNY to settle at 8,402CNY. **Price Impact – Mixed**
- Nearby (Jul'26) Brent crude gained \$2.92 to settle at \$104.21/b. **Price Impact – Positive**
- Brent made gains at the beginning of the week yesterday, after it became clear throughout the day yesterday that the US and Iranian negotiating positions remain adrift from one another, pulling supply concerns back into focus once again.
- Benchmark European natural gas gained €2.09 to settle at €46.23/MWh (Jun'26). **Price Impact – Negative**
- USDA: US winter wheat conditions 28% good to excellent, below estimates of 32%, down from 31% the previous week, down from 54% the previous year and below the 5-year average of 42%. **Price Impact – Positive**
- USDA: US spring wheat area 53% planted so far, above estimates of 50%, up from 32% the previous week, down from 63% the previous year and above the 5-year average of 51%. **Price Impact – Mixed**

Hubbards Seeds – Cover, Companions, Forage, Trees & More

Whether it's cover crops ahead of a spring crop, a companion in your OSR, maize for silage, or trees & hedging for structure & biodiversity, we're here to support every part of your rotation.

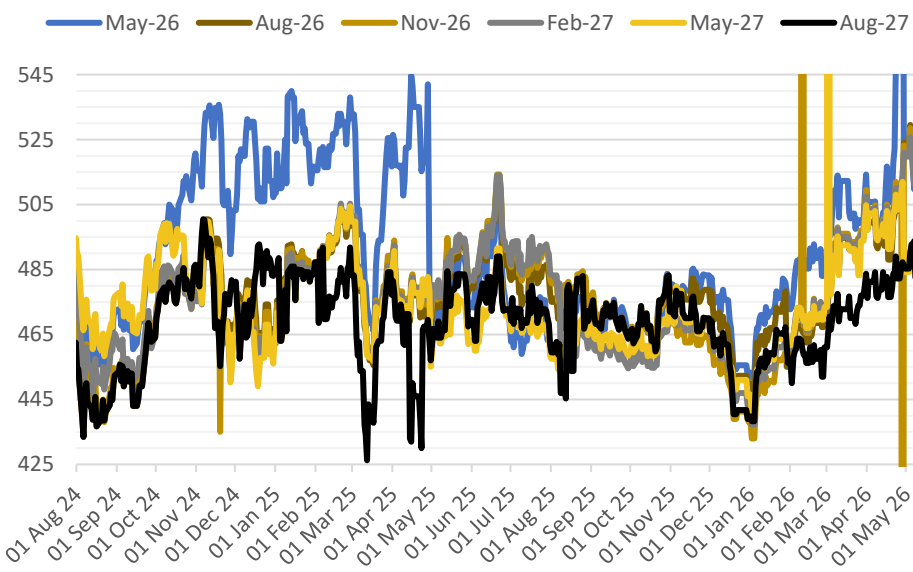
01380 729200 ~ hello@hubbardsseeds.co.uk

	Erith	Liverpool	Stratford	Berwick	Montrose	Whitehill / Murphy
Aug-26	£455	£453	£454	£437	£433	£427
Sep-26	£460	£458	£459	£441	£435	£429
Oct-26	£462	£460	£461	£443	£437	£431
Nov-26	£464	£462	£463	£445	£439	£433
Dec-26	£464	£462	£463	£445	£439	£433



MARKET TRENDS & CURRENCY

MATIF OSR Daily Settlement €/t



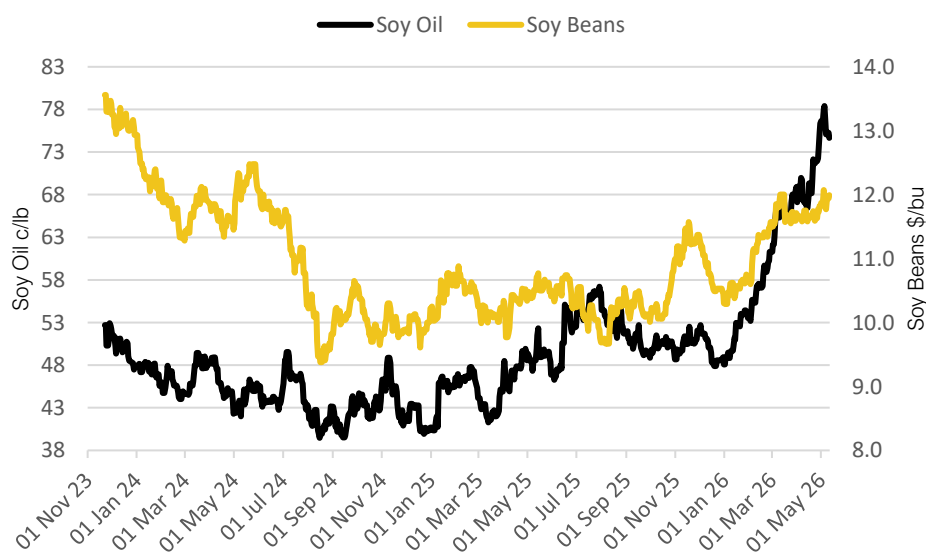
Nearby ICE London Feed Wheat Daily Settlement £/t



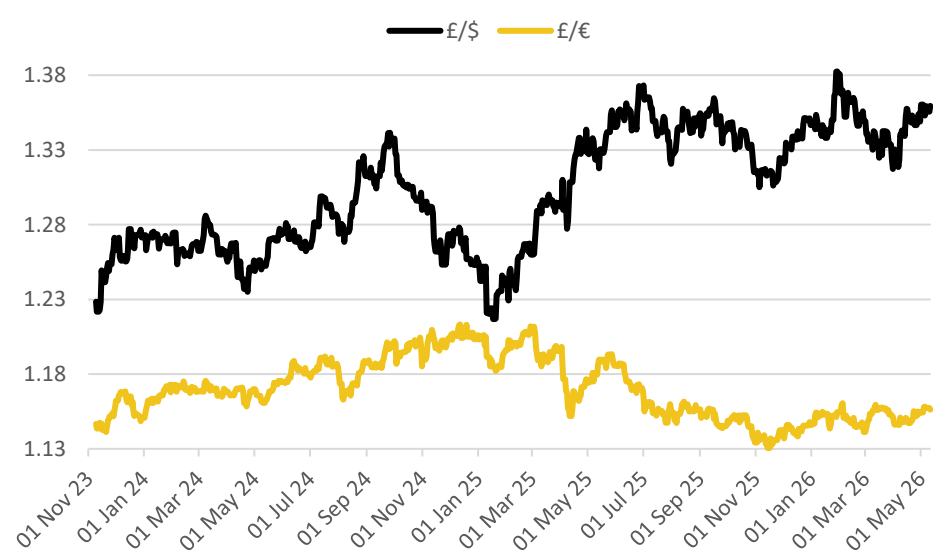
CBOT US Soy Complex – Settlement 11.05.2026			
Contract	\$	Month	Daily Change
Soybeans (\$/bu)	\$11.99	May-26	+5.4c
Soy Oil (c/lb)	74.68c	May-26	-0.58c
Soy Meal (\$/T)	\$327.90	May-26	+\$5.40

ICE London Feed Wheat – Settlement 11.05.2026		
Delivery Month	£/t	Daily Change
May-26	£190.00	+£1.55
Nov-26	£187.00	+£2.55
Jan-27	£190.50	+£2.50
Mar-27	£193.75	+£2.50

CBOT US Soy Beans & Soy Oil



Exchange Rates: GBP / USD & GBP / EUR



THE UNITED OILSEEDS OSR REBOOTS

Restore UK OSR Self Sufficiency – Boost Economic Growth – Reverse Biodiversity Declines – Level the Playing Field for UK Farmers

SAVE OUR YELLOW FIELDS! – [View the Campaign Here](#)