



DAILY MARKET REPORT

MARKETS – DAILY COMMENTS & MARKET DRIVERS

On Wednesday, Feb-26 MATIF opened at €472.50 and traded between highs of €479 and lows of €471.75, before settling at €476.50, up €4.75 on Tuesday’s settlement.

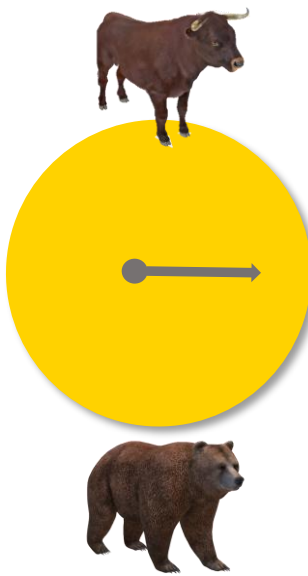
- On the CBOT, it was a mixed day across the 3 legs of the soy complex. Jan'26 soybeans gained 4c to settle at \$10.91/bu, soy oil gained 0.07c to settle at 51.09c/lb, whilst soymeal fell 10c to settle at \$301.2/t. **Price Impact – Mixed**
- On the Bursa Malaysia, Jan'26 crude palm oil fell 44RM to settle at 4,041RM. **Price Impact – Negative**
- On the Dalian, Jan'26 soybeans gained 44CNY to settle at 4,167CNY, soymeal gained 36CNY to settle at 3,025CNY, whilst soy oil gained 48CNY to settle at 8,258CNY. **Price Impact – Positive**
- Nearby (Feb'26) Brent crude gained 27c to settle at \$62.21/b. **Price Impact – Positive**
- Oil made gains yesterday on news that the US seized an oil tanker off the Venezuelan
- Benchmark European natural gas fell 89c to settle at €26.6/MWh (Jan'26). **Price Impact – Positive**
- China bought 136kt of US soybeans yesterday, whilst Poland bought 120kt of US soymeal & cake. **Price Impact – Positive**
- LSEG forecast heavy rains for central Brazil over the coming two weeks which may disrupt early soybean harvest progress. **Price Impact – Mixed**
- The Fed cut US rates by 0.25% yesterday, in line with market expectations. **Price Impact – Mixed**
- USDA estimate Oct'25 soybean crus at 237.1m/bu, beating estimates of 234.2m/bu, up from 205m/bu in Sep'25. **Price Impact – Positive**
- Malaysian palm oil board estimate Nov'25 Malaysian palm oil production at 1.94Mmt, down from 5.3% last month. Exports are estimated at 1.21Mmt, down 28.1% month on month, stocks are estimated at 2.84Mmt, up 13% month on month. **Price Impact – Mixed**

Hubbards Seeds – Cover, Companions, Forage, Trees & More

Whether it’s cover crops ahead of a spring crop, a companion in your OSR, maize for silage, or trees & hedging for structure & biodiversity, we’re here to support every part of your rotation.

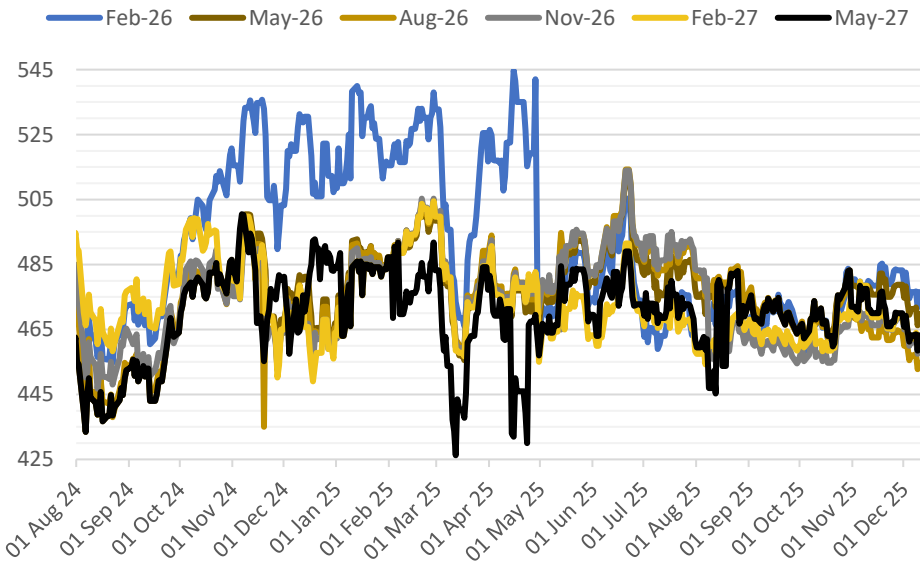
01380 729200 ~ hello@hubbardsseeds.co.uk

	Erith	Liverpool	Stratford	Berwick	Montrose	Whitehill / Murphy
Dec-25	£425	£425	£425	£410	£405	POA
Jan-26	£426	£426	£426	£411	£406	POA
Feb-26	£427	£427	£427	£412	£407	POA
Mar-26	£427	£427	£427	£412	£407	POA
Apr-26	£427	£427	£427	£412	£407	POA
Aug-26	£405	£405	£405	£390	£385	£380
Sep-26	£408	£408	£408	£393	£386	£381
Oct-26	£409	£409	£409	£394	£387	£382



MARKET TRENDS & CURRENCY

MATIF OSR Daily Settlement €/t



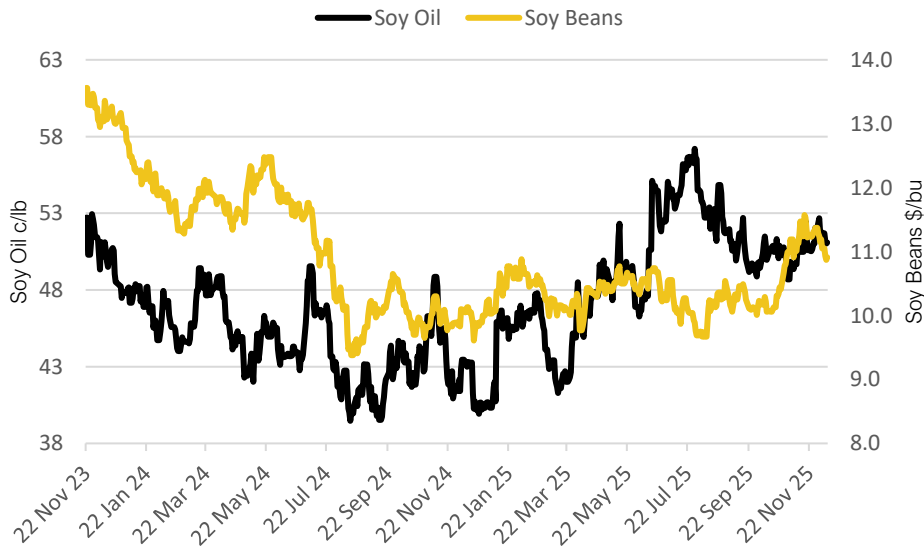
Nearby ICE London Feed Wheat Daily Settlement £/t



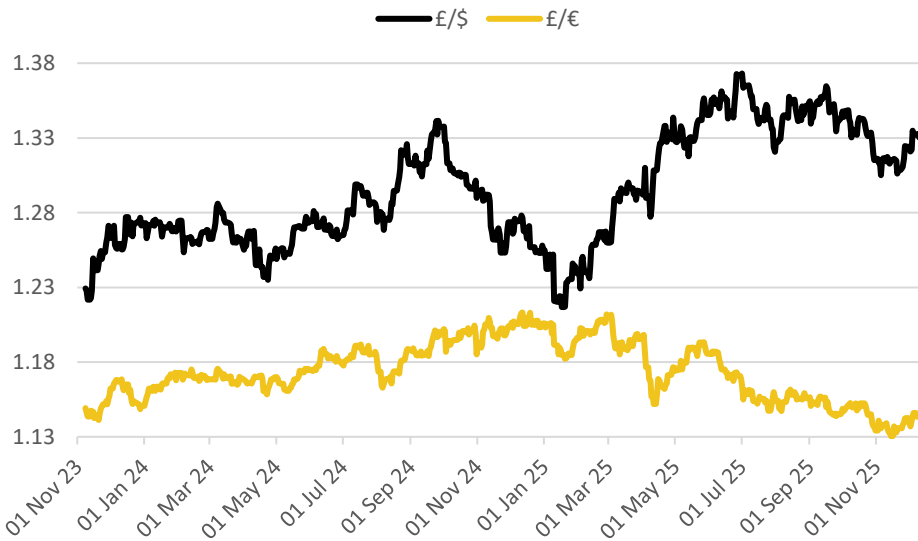
CBOT US Soy Complex – Settlement 10.12.2025			
Contract	\$	Month	Daily Change
Soybeans (\$/bu)	\$10.91	Jan-26	+4.00c
Soy Oil (c/lb)	51.09c	Jan-26	+0.07c
Soy Meal (\$/T)	\$301.20	Dec-25	-\$0.10

ICE London Feed Wheat – Settlement 10.12.2025		
Delivery Month	£/t	Daily Change
Jan-26	£164.10	-£0.25
May-26	£170.10	-£0.25
Nov-26	£173.90	-£0.20
Jan-27	£176.80	unch

CBOT US Soy Beans & Soy Oil



Exchange Rates: GBP / USD & GBP / EUR



THE UNITED OILSEEDS OSR REBOOT

Restore UK OSR Self Sufficiency – Boost Economic Growth – Reverse Biodiversity Declines – Level the Playing Field for UK Farmers

SAVE OUR YELLOW FIELDS! – [View the Campaign Here](#)