



DAILY MARKET REPORT

MARKETS – DAILY COMMENTS & MARKET DRIVERS

On Tuesday, May-26 MATIF opened at €487.75 and traded between highs of €489.25 and lows of €485, before settling at €487.75, down €1.50 on Monday’s settlement.

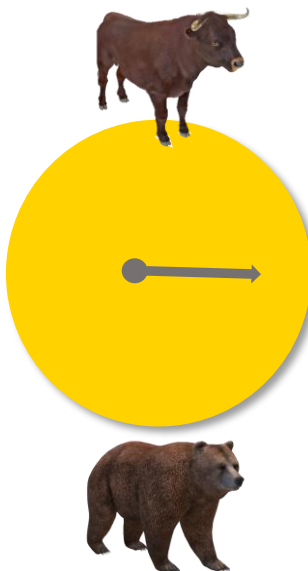
- On the CBOT, all 3 legs of the soy complex made gains yesterday. Mar’26 soybeans gained 11.6c to settle at \$11.22/bu, soy oil gained 0.58c to settle at 57.27c/lb, whilst soy meal gained \$3 to settle at \$300.8/t. **Price Impact – Positive**
- On the Bursa Malaysia, Mar’26 crude palm oil fell 35RM to settle at 4,035RM. **Price Impact – Negative**
- On the Dalian, May’26 soybeans gained 42CNY to settle at 4,501CNY, soymeal gained 25CNY to settle at 2,758CNY, whilst soy oil fell 14CNY to settle at 8,100CNY. **Price Impact – Mixed**
- Nearby (Apr’26) Brent crude fell 24c to settle at \$68.8/b. **Price Impact – Mixed**
- The to-and-fro of US-Iran geopolitical tensions continues to drive oil and energy markets worldwide, meanwhile Reuters polling places US crude stocks as rising last week.
- Benchmark European natural gas fell €1.65 to settle at €31.85/MWh (Mar’26). **Price Impact – Positive**
- Feb’26 WASDE placed 25/26 world soybean stocks at 125.51Mmt, up from 124.41Mt last month and estimates of 125.30Mmt. **Price Impact – Negative**
- Feb’26 WASDE placed 25/26 US soybean stocks at 350m/bu, unchanged on 350Mmt last month and above estimates of 347Mmt. **Price Impact – Negative**
- Feb’26 WASDE placed 25/26 Brazilian soybean production at 180Mmt, up from 178Mm last month and above estimates of 179.39Mmt. **Price Impact – Negative**

Hubbards Seeds – Cover, Companions, Forage, Trees & More

Whether it’s cover crops ahead of a spring crop, a companion in your OSR, maize for silage, or trees & hedging for structure & biodiversity, we’re here to support every part of your rotation.

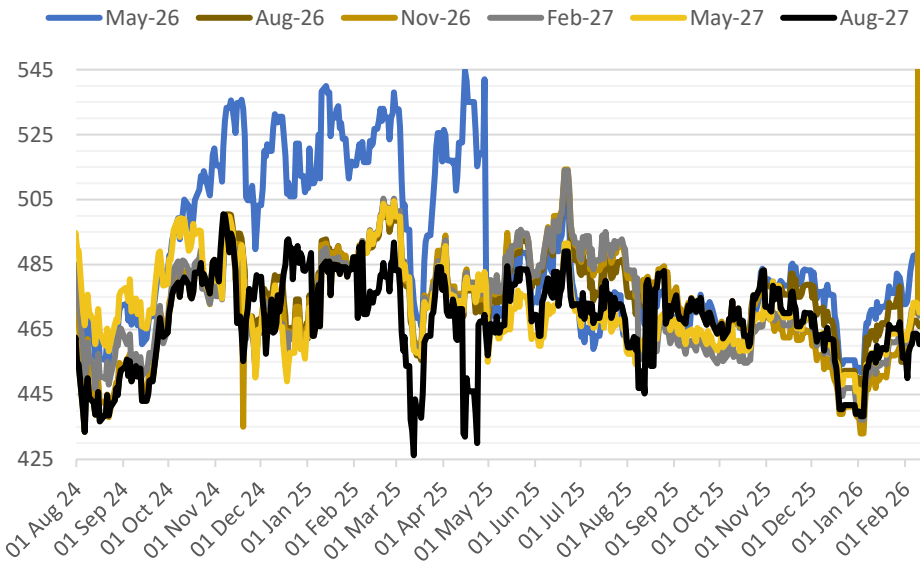
01380 729200 ~ [hello@hubbardsseeds.co.uk](mailto:hello@hubbardsseeds.co.uk)

	Erith	Liverpool	Stratford	Berwick	Montrose	Whitehill / Murphy
Feb-26	£445	£442	£445	£429	POA	POA
Mar-26	£447	£442	£445	£429	£415	POA
Apr-26	£447	£442	£445	£429	£415	POA
May-26	£447	£442	£445	£429	£415	POA
Flat market NO carry onwards						
Aug-26	£413	£413	£413	£397	£391	£386
Sep-26	£417	£417	£417	£401	£393	£388
Oct-26	£419	£419	£419	£403	£395	£390
Nov-26	£421	£421	£421	£405	£397	£392
£1 Carry/Month onwards						



MARKET TRENDS & CURRENCY

MATIF OSR Daily Settlement €/t



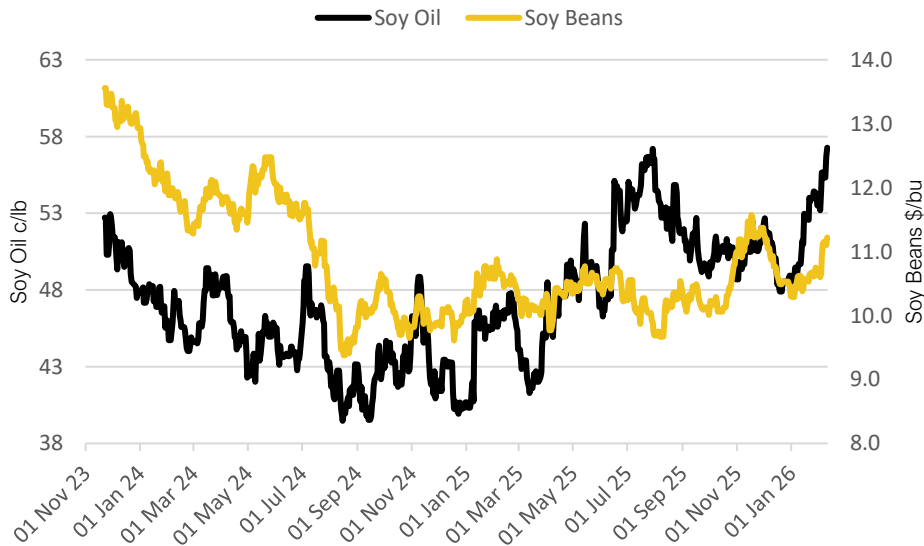
Nearby ICE London Feed Wheat Daily Settlement £/t



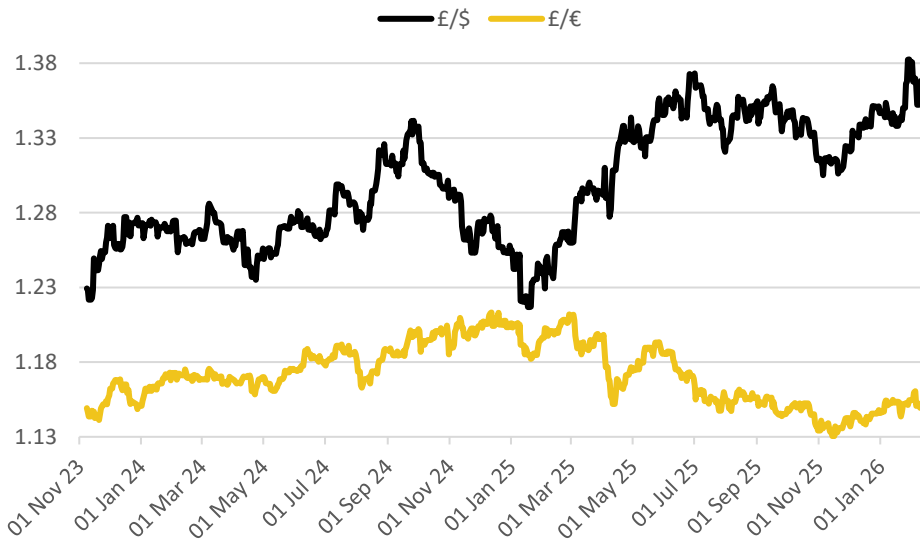
CBOT US Soy Complex – Settlement 10.02.2026			
Contract	\$	Month	Daily Change
Soybeans (\$/bu)	\$11.22	Mar-26	+11.6c
Soy Oil (c/lb)	57.27c	Mar-26	+0.58c
Soy Meal (\$/T)	\$300.8	Mar-26	+\$3.00

ICE London Feed Wheat – Settlement 10.02.2026		
Delivery Month	£/t	Daily Change
Mar-26	£163.75	+£0.15
May-26	£166.75	+£0.15
Nov-26	£170.55	+£0.10
Jan-27	£173.70	-£0.10

CBOT US Soy Beans & Soy Oil



Exchange Rates: GBP / USD & GBP / EUR



THE UNITED OILSEEDS OSR REBOOT

Restore UK OSR Self Sufficiency – Boost Economic Growth – Reverse Biodiversity Declines – Level the Playing Field for UK Farmers

SAVE OUR YELLOW FIELDS! – [View the Campaign Here](#)