

DAILY MARKET REPORT

MARKETS – DAILY COMMENTS & MARKET DRIVERS

On Thursday May-26 MATIF opened at €499.25 and traded between highs of €502.50 and lows of €495.25, before settling at €497 unchanged on Wednesday's settlement.

- On the CBOT, all three legs of the soy complex settled higher. May'26 soybeans gained 3.2c to settle at \$11.65/bu, soy oil gained 0.28c to settle at 67.70c/lb, whilst soymeal gained \$3.5 to settle at \$317.6/t. **Price Impact – Positive**
- On the Bursa Malaysia, May'26 crude palm oil gained 53RM to settle at 4,610RM. **Price Impact – Positive**
- On the Dalian, May26 soybeans gained 123CNY to settle at 4,865CNY, soymeal gained 16CNY to settle at 2,853CNY, whilst soy oil gained 49CNY to settle at 8,531CNY. **Price Impact – Positive**
- Nearby (Jun'26) Brent crude gained \$1.17 to settle at \$95.92/b. **Price Impact – Positive**
- Oil made gains yesterday despite the announcement of a two-week ceasefire between the US and Iran as ambiguities over the terms of the ceasefire have emerged almost immediately, meanwhile ship traffic through the Strait of Hormuz remains at a virtual standstill.
- Benchmark European natural gas gained 87c to settle at €46.18/MWh (May'26). **Price Impact – Mixed**
- April USDA WASDE was released yesterday evening,
 - o 25/26 world soybean stocks came in at 124.79Mmt, below estimates of 125.51Mmt and down from 125.31Mmt. **Price Impact – Positive**
 - o 25/26 US soybean stocks came in at 350m/bu, just above estimates of 349m/bu and unchanged on last month. **Price Impact – Mixed**
 - o 25/26 Argentine soybean production came in at 48Mmt, below estimates of 48.04Mmt and unchanged on last month. **Price Impact – Positive**
 - o 25/26 Brazilian soybean production came in at 180Mmt, above estimates of 179.84Mmt and unchanged on last month. **Price Impact – Positive**

Hubbards Seeds – Cover, Companions, Forage, Trees & More

Whether it's cover crops ahead of a spring crop, a companion in your OSR, maize for silage, or trees & hedging for structure & biodiversity, we're here to support every part of your rotation.

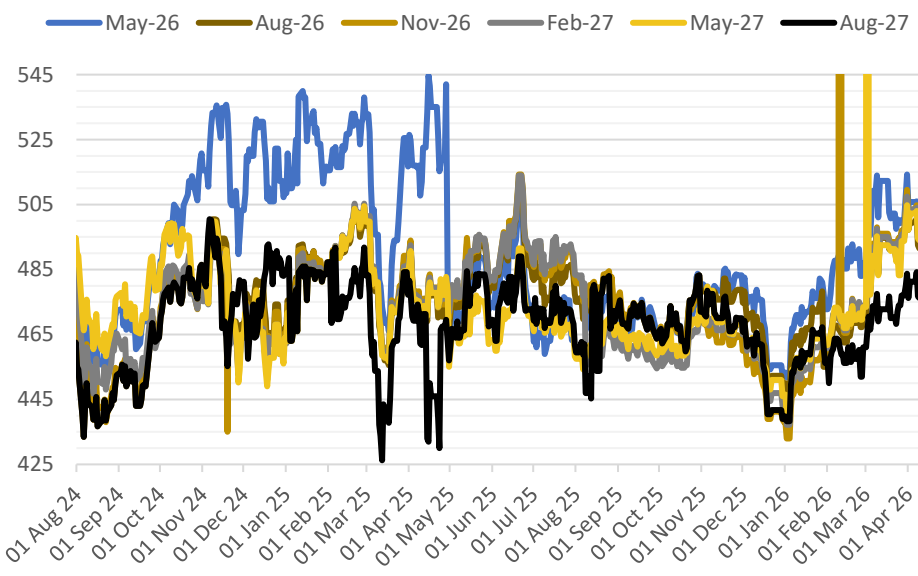
01380 729200 ~ hello@hubbardsseeds.co.uk

| | Erith | Liverpool | Stratford | Berwick | Montrose | Whitehill / Murphy |
|---------------|-------|-----------|-----------|---------|----------|--------------------|
| Aug-26 | £433 | £433 | £433 | £415 | £410 | £405 |
| Sep-26 | £437 | £437 | £437 | £419 | £414 | £409 |
| Oct-26 | £440 | £439 | £439 | £421 | £415 | £410 |
| Nov-26 | £441 | £441 | £441 | £423 | £416 | £411 |



MARKET TRENDS & CURRENCY

MATIF OSR Daily Settlement €/t



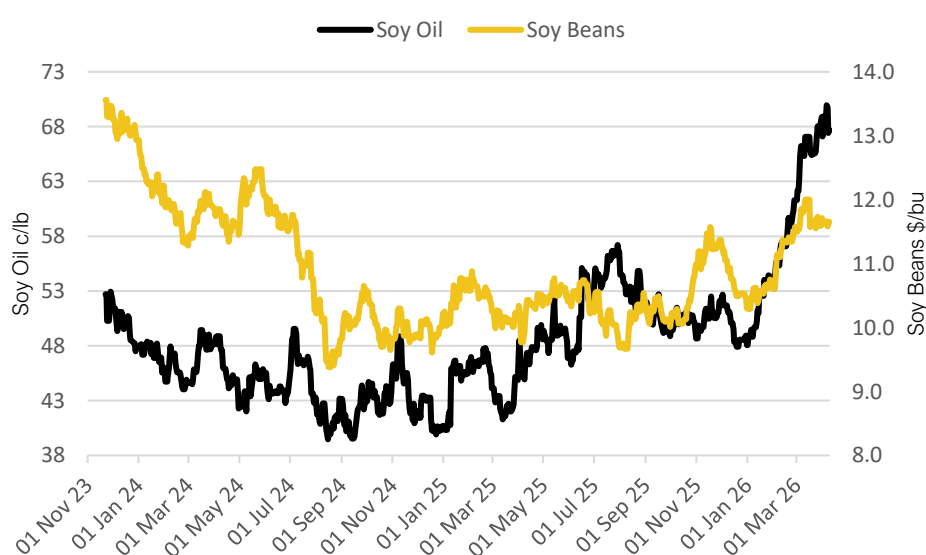
Nearby ICE London Feed Wheat Daily Settlement £/t



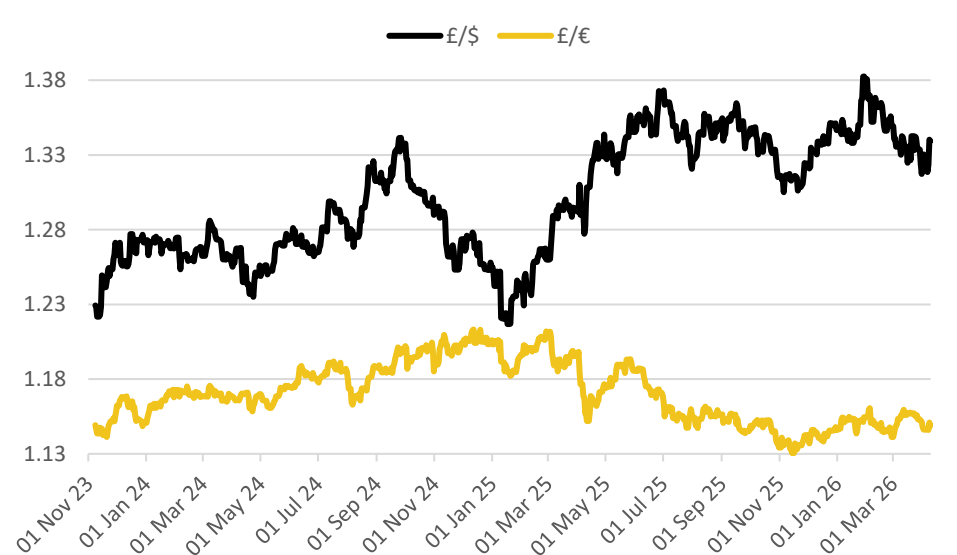
| CBOT US Soy Complex – Settlement 09.04.2026 | | | |
|---|----------|--------|--------------|
| Contract | \$ | Month | Daily Change |
| Soybeans (\$/bu) | \$11.65 | May-26 | +3.2c |
| Soy Oil (c/lb) | 67.70c | May-26 | +0.28c |
| Soy Meal (\$/T) | \$317.60 | May-26 | +\$3.50 |

| ICE London Feed Wheat – Settlement 09.04.2026 | | |
|---|---------|--------------|
| Delivery Month | £/t | Daily Change |
| May-26 | £172.75 | -£0.45 |
| Nov-26 | £179.20 | -£1.85 |
| Jan-27 | £182.30 | -£1.85 |
| Mar-27 | £185.40 | -£1.85 |

CBOT US Soy Beans & Soy Oil



Exchange Rates: GBP / USD & GBP / EUR



THE UNITED OILSEEDS OSR REBOOT5

Restore UK OSR Self Sufficiency – Boost Economic Growth – Reverse Biodiversity Declines – Level the Playing Field for UK Farmers

SAVE OUR YELLOW FIELDS! – [View the Campaign Here](#)