

DAILY MARKET REPORT

MARKETS – DAILY COMMENTS & MARKET DRIVERS

On Tuesday May-26 MATIF opened at €505.5 and traded between highs of €507.25 and lows of €502.25, before settling at €506, down €0.25 on Thursday's settlement.

- All three legs of the soy complex settled lower yesterday. May'26 soybeans fell 8.4c to settle at \$11.58b/u, soy oil fell 0.23c to settle at 69.72c/lb, whilst soymeal fell \$4.8 to settle at \$311.8/t. **Price Impact – Negative**
- On the Bursa Malaysia, May'26 crude palm oil fell 49RM to settle at 4,730RM. **Price Impact – Negative**
- On the Dalian, May'26 soybeans fell 10CNY to settle at 4,622CNY, soymeal settled unchanged at 2,838CNY, whilst soy oil fell 144CNY to settle at 8,586CNY. **Price Impact – Negative**
- Nearby (Jun'26) Brent crude fell 50c to settle at \$109.27/b. **Price Impact – Negative**
- Brent traded largely sideways yesterday as the US imposed deadline on Iran loomed into view, this morning news of a two-week ceasefire, agreed at the 11th hour and brokered by Pakistan, has sent oil sharply lower. However, commentators are already noting that there is by no means unanimity between the US and Iran over the proposed ten-point plan to ensure a longer lasting peace.
- Benchmark European natural gas gained €3.2 to settle at €53.25/MWh (May'26). **Price Impact – Negative**
- EU commission data places 25/26 EU OSR imports at 3.61Mmt so far this season, down from 5.33Mmt at the same time last season. **Price Impact – Mixed**
- EU commission data places 25/26 EU soft wheat exports at 18Mmt so far this season, up from 16.79Mmt at the same time last season. **Price Impact – Mixed**
- Brazilian Government estimates Mar'26 Brazilian soybean exports at 14.52mmt, down from 14.66Mmt this time last year. **Price Impact - Positive**
- US winter wheat conditions are currently 35% good-to-excellent, below estimates of 42% and down from 48% last year. **Price Impact - Positive**

Hubbards Seeds – Cover, Companions, Forage, Trees & More

Whether it's cover crops ahead of a spring crop, a companion in your OSR, maize for silage, or trees & hedging for structure & biodiversity, we're here to support every part of your rotation.

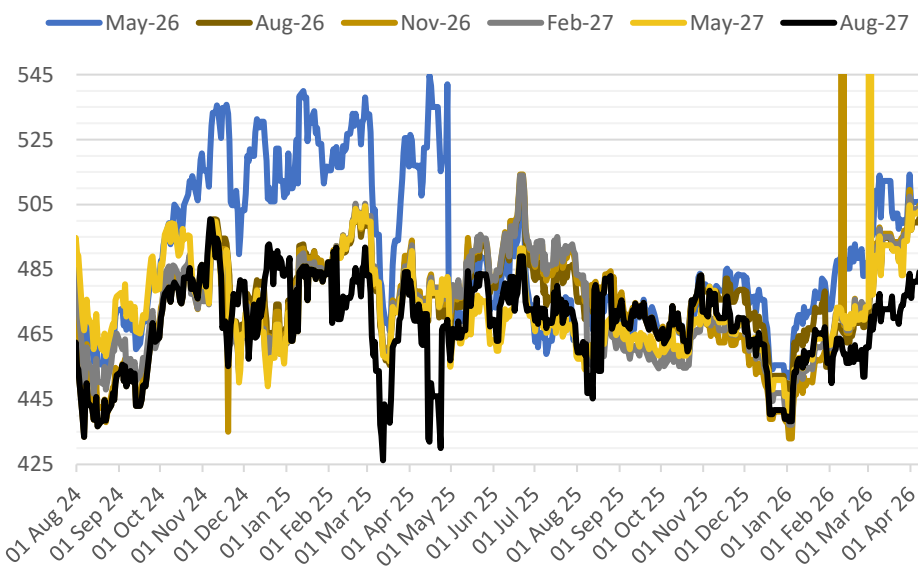
01380 729200 ~ hello@hubbardsseeds.co.uk

	Erith	Liverpool	Stratford	Berwick	Montrose	Whitehill / Murphy
Apr-26	£455	POA	£452	POA	POA	POA
May-26	£455	£453	£452	POA	POA	POA
Jun-26	£455	£453	£452	POA	POA	POA
Aug-26	£431	£431	£431	£411	£408	£403
Sep-26	£435	£435	£435	£417	£412	£407
Oct-26	£438	£437	£437	£419	£413	£408
Nov-26	£439	£439	£439	£421	£414	£409



MARKET TRENDS & CURRENCY

MATIF OSR Daily Settlement €/t



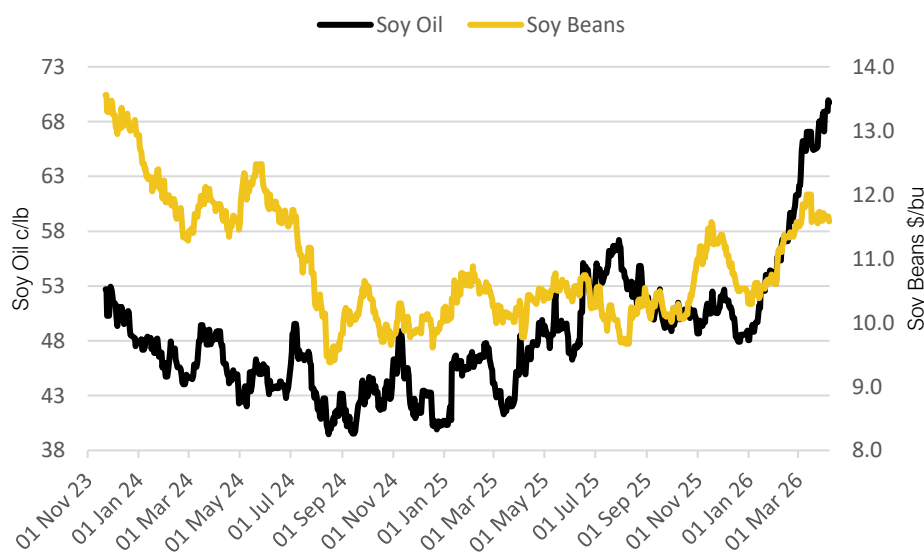
Nearby ICE London Feed Wheat Daily Settlement £/t



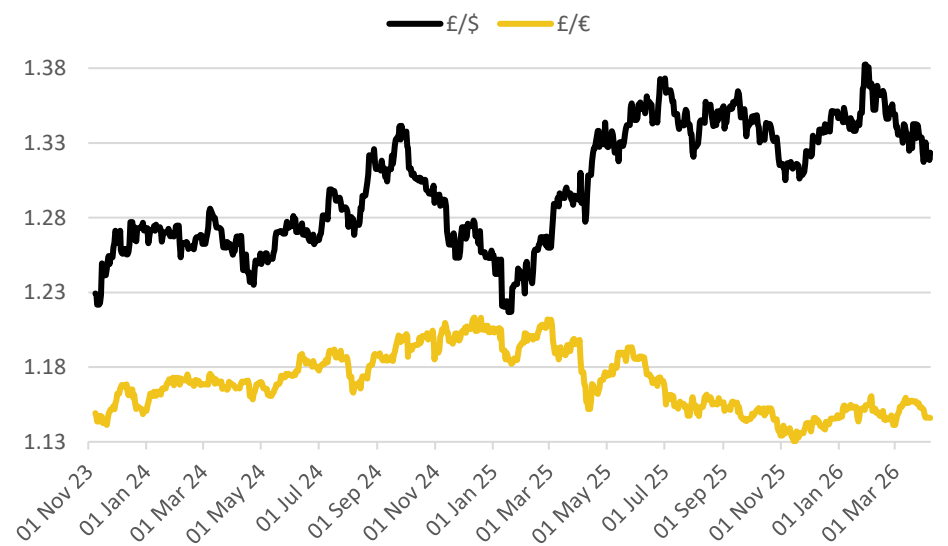
Contract	\$	Month	Daily Change
Soybeans (\$/bu)	\$11.58	May-26	-8.4c
Soy Oil (c/lb)	69.72c	May-26	-0.23c
Soy Meal (\$/T)	\$311.80	May-26	-\$4.80

Delivery Month	£/t	Daily Change
May-26	£176.00	+£0.90
Nov-26	£186.00	+£1.15
Jan-27	£189.10	+£0.90
Mar-27	£192.20	+£0.65

CBOT US Soy Beans & Soy Oil



Exchange Rates: GBP / USD & GBP / EUR



THE UNITED OILSEEDS OSR REBOOT5

Restore UK OSR Self Sufficiency – Boost Economic Growth – Reverse Biodiversity Declines – Level the Playing Field for UK Farmers

SAVE OUR YELLOW FIELDS! – [View the Campaign Here](#)