

# DAILY MARKET REPORT

## MARKETS – DAILY COMMENTS & MARKET DRIVERS

**On Wednesday, Feb-26 MATIF opened at €467.25, and traded between highs of €468.75 and lows of €465, before settling at €466.75, down €0.25 on Tuesday's settlement.**

- On the CBOT, it was a mixed day across the 3 legs of the soy complex. Mar'26 soybeans gained 10.6c to settle at \$10.67/bu, soy oil fell 0.09c to settle at 49.31c/lb, whilst soymeal gained \$5.9 to settle at \$305.4/t. **Price Impact – Mixed**
- On the Bursa Malaysia, Mar'26 crude palm oil gained 43RM to settle at 4,033RM. **Price Impact – Positive**
- On the Dalian, Mar'26 soybeans gained 23CNY to settle at 4,333CNY, soy oil gained 36CNY to settle at 8,152CNY, whilst soymeal fell 3CNY to settle at 3,127CNY. **Price Impact – Mixed**
- Nearby (Mar'26) Brent crude fell 74c to settle at \$59.96/b. **Price Impact – Negative**
- Brent crude fell yesterday after Trump's statement that Venezuela will export \$2 billion worth of oil to the US.
- Benchmark European natural gas gained 71c to settle at €28.78/MWh (Feb'26). **Price Impact – Mixed**
- Anec estimate 2026 Brazilian soybean exports at 112Mmt, a new record if realised, up from 109Mmt in 2025. **Price Impact – Mixed**
- Anec estimate 2026 Brazilian soybean exports to China at 77Mmt, down from 87Mmt in 2025, as China resumes purchases of US origin soybeans. **Price Impact – Mixed**
- Canadian PM, Mark Carney, is set to visit China between 13<sup>th</sup>-17<sup>th</sup> January. The visit is expected to focus on making progress over various trade matters, including Canadian exports of canola meal and oil to China, and Chinese EV exports to Canada. **Price Impact – Mixed**

### Hubbards Seeds – Cover, Companions, Forage, Trees & More

Whether it's cover crops ahead of a spring crop, a companion in your OSR, maize for silage, or trees & hedging for structure & biodiversity, we're here to support every part of your rotation.

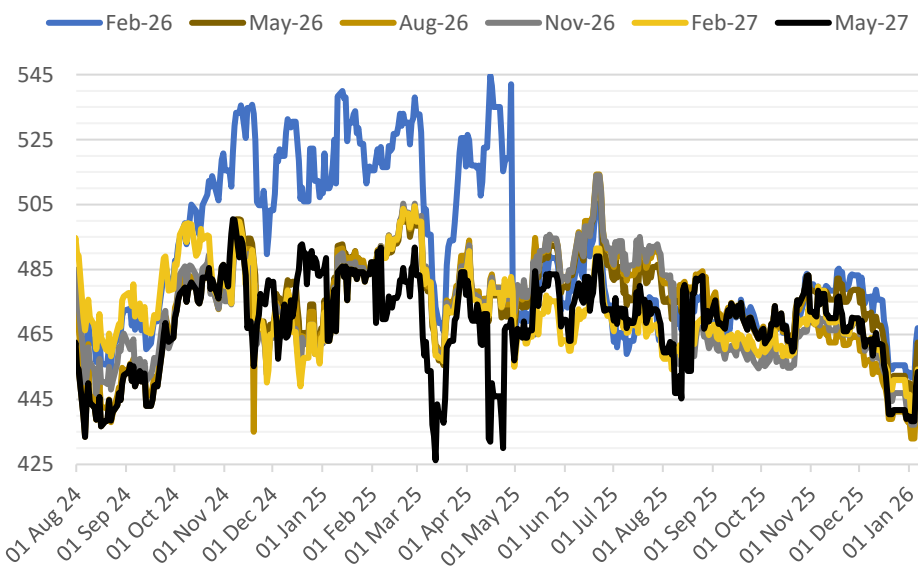
01380 729200 ~ [hello@hubbardsseeds.co.uk](mailto:hello@hubbardsseeds.co.uk)

	Erith	Liverpool	Stratford	Berwick	Montrose	Whitehill / Murphy
Jan-26	£419	£419	£419	£404	£399	POA
Feb-26	£420	£420	£420	£405	£400	POA
Mar-26	£420	£420	£420	£405	£400	POA
Apr-26	£420	£420	£420	£405	£400	POA
May-26	£420	£420	£420	£405	£400	POA
Aug-26	£396	£396	£396	£381	£376	£371
Sep-26	£400	£400	£400	£385	£378	£373
Oct-26	£402	£402	£402	£387	£380	£375



### MARKET TRENDS & CURRENCY

MATIF OSR Daily Settlement €/t



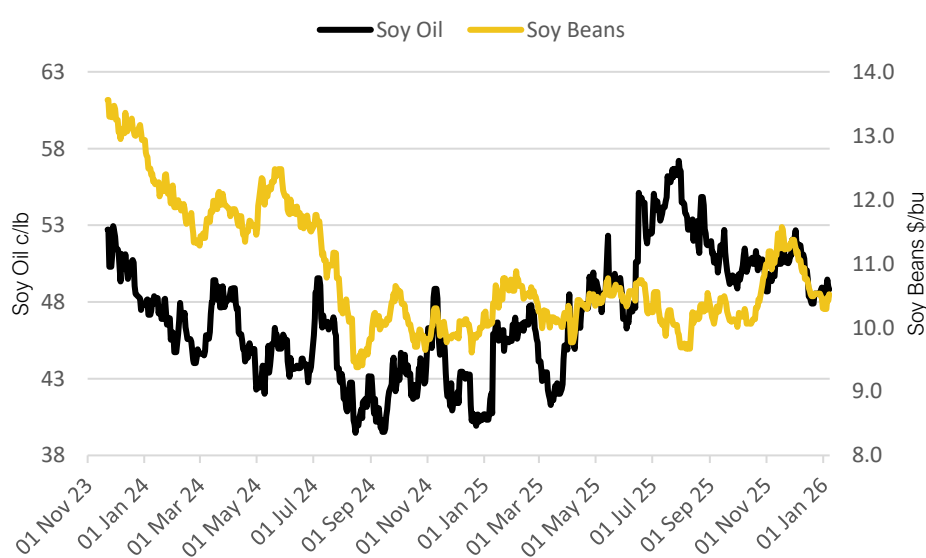
Nearby ICE London Feed Wheat Daily Settlement £/t



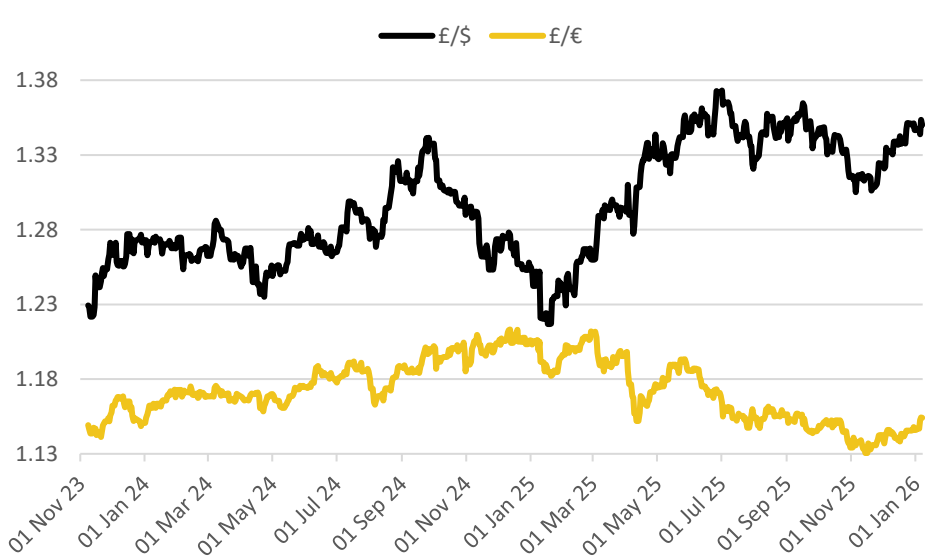
Contract	\$	Month	Daily Change
Soybeans (\$/bu)	\$10.67	Mar-26	+10.6c
Soy Oil (c/lb)	49.31c	Mar-26	-0.09c
Soy Meal (\$/T)	\$305.4	Mar-26	+\$5.90

Delivery Month	£/t	Daily Change
Jan-26	£162.00	+£0.05
May-26	£169.20	+£0.05
Nov-26	£171.55	+£0.55
Jan-27	£174.45	+£0.40

CBOT US Soy Beans & Soy Oil



Exchange Rates: GBP / USD & GBP / EUR



### THE UNITED OILSEEDS OSR REBOOT

**Restore UK OSR Self Sufficiency – Boost Economic Growth – Reverse Biodiversity Declines – Level the Playing Field for UK Farmers**

**SAVE OUR YELLOW FIELDS! – [View the Campaign Here](#)**