

# DAILY MARKET REPORT

## MARKETS – DAILY COMMENTS & MARKET DRIVERS

**On Wednesday, Aug'26 MATIF opened at €521.75 and traded between highs of €522.50 and lows of €513.50, before settling at €516.75, down €8.75 on Tuesday's settlement.**

- On the CBOT, all three legs of the soy complex settled lower. May'26 soybeans fell 16.6c to settle at \$11.79/bu, soy oil fell 1.89c to settle at 76.51c/lb, whilst soymeal fell \$2.8 to settle at \$319.8/t. **Price Impact – Negative**
- On the Bursa Malaysia, Jul'26 crude palm oil fell 131RM to settle at 4,579RM. **Price Impact – Negative**
- On the Dalian, May'26 soybeans fell 35CNY to settle at 4,842CNY, soymeal fell 16CNY to settle at 2,815CNY, whilst soy oil fell 82CNY to settle at 8,548CNY. **Price Impact – Negative**
- Nearby (Jul'26) Brent crude fell \$8.6 to settle at \$101.27/b. **Price Impact – Negative**
- Brent crude prices fell to two-week lows yesterday after a day of speculation that the US and Iran were once again approaching peace terms. The benchmark finished down 7.8% but had been as low as down 12% during the day, however pared some of these losses when Trump warned that the US would resume their bombing campaign if Iran didn't accept their terms.
- Benchmark European natural gas fell €3.02 to settle at €43.9/MWH (Jun'26). **Price Impact – Mixed**
- StatsCan report that Canadian canola (OSR) stocks as of March 31<sup>st</sup> were 10Mmt up from 7.8Mmt last year. Wheat stocks are estimated to be 19.5Mmt, up from 17.4Mmt in Mar'25. **Price Impact – Negative**
- The US Soybean Association has expressed concerns over the risk of China applying higher import taxes on US soybeans in response to US trade investigations into "excess industrial capacity". **Price Impact – Mixed**

### Hubbards Seeds – Cover, Companions, Forage, Trees & More

Whether it's cover crops ahead of a spring crop, a companion in your OSR, maize for silage, or trees & hedging for structure & biodiversity, we're here to support every part of your rotation.

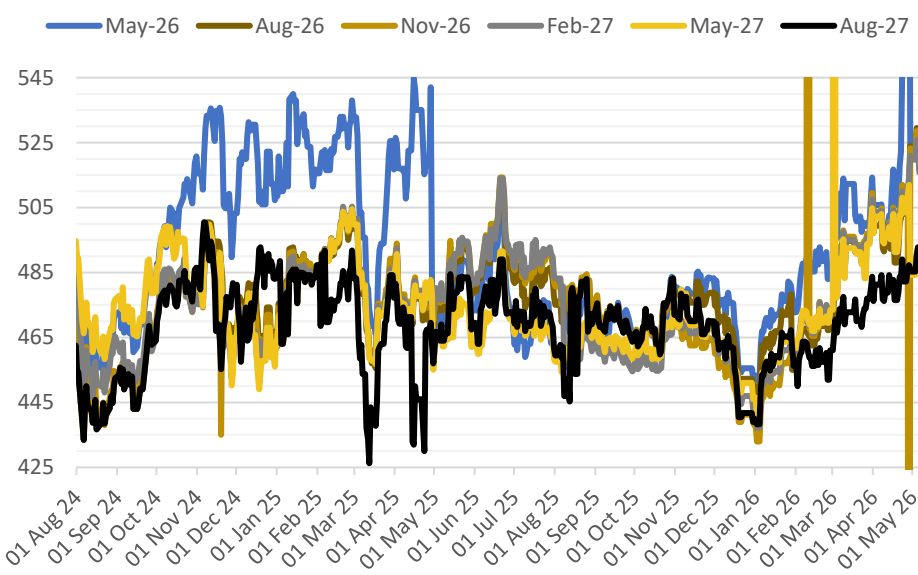
01380 729200 ~ [hello@hubbardsseeds.co.uk](mailto:hello@hubbardsseeds.co.uk)

	Erith	Liverpool	Stratford	Berwick	Montrose	Whitehill / Murphy
<b>Aug-26</b>	£448	£446	£447	£426	£424	£418
<b>Sep-26</b>	£453	£451	£452	£431	£429	£423
<b>Oct-26</b>	£457	£455	£456	£435	£433	£427
<b>Nov-26</b>	£459	£457	£458	£437	£435	£429



### MARKET TRENDS & CURRENCY

MATIF OSR Daily Settlement €/t



Nearby ICE London Feed Wheat Daily Settlement £/t



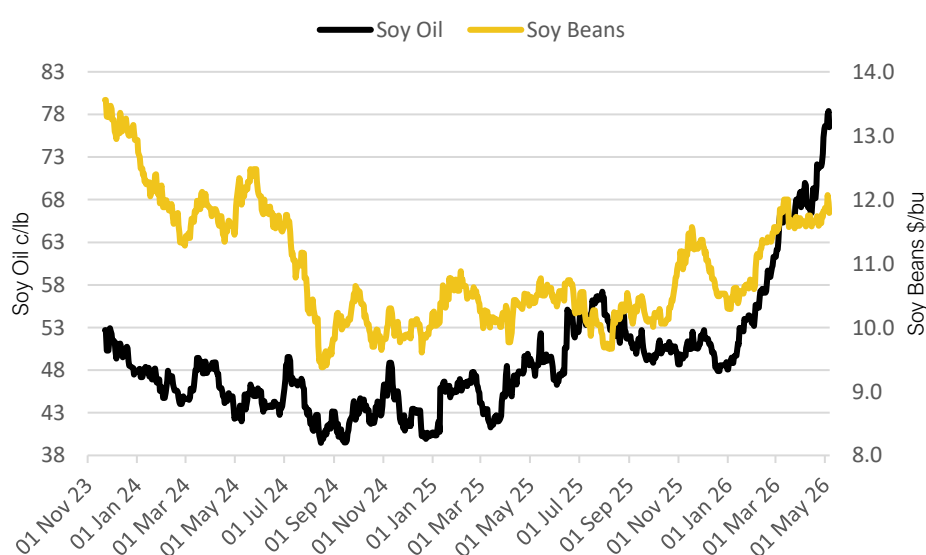
CBOT US Soy Complex – Settlement 06.05.2026

Contract	\$	Month	Daily Change
Soybeans (\$/bu)	\$11.79	May-26	-16.6c
Soy Oil (c/lb)	76.51c	May-26	-1.89c
Soy Meal (\$/T)	\$319.80	May-26	-\$2.80

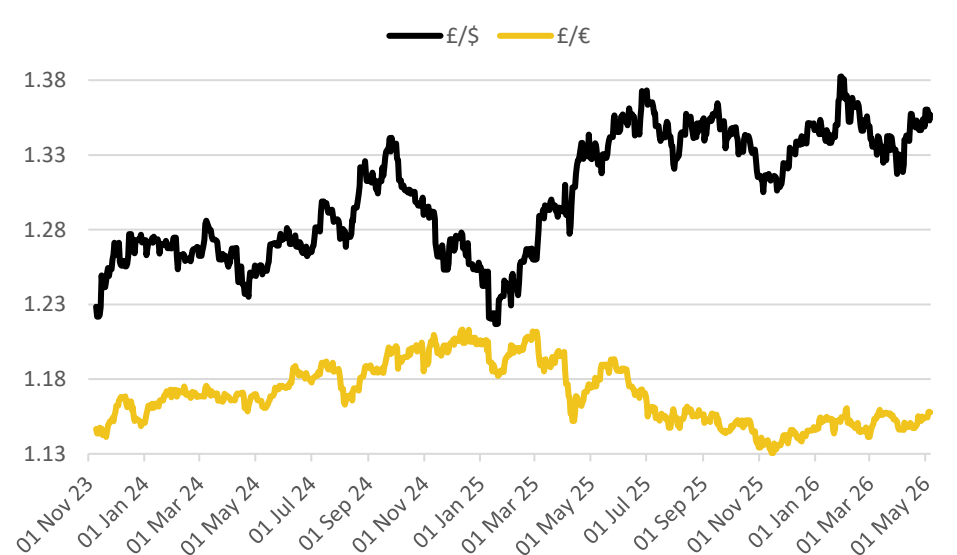
ICE London Feed Wheat – Settlement 06.05.2026

Delivery Month	£/t	Daily Change
May-26	£186.30	-£0.50
Nov-26	£184.25	-£2.15
Jan-27	£187.50	-£2.10
Mar-27	£190.75	-£2.05

CBOT US Soy Beans & Soy Oil



Exchange Rates: GBP / USD & GBP / EUR



### THE UNITED OILSEEDS OSR REBOOT5

**Restore UK OSR Self Sufficiency – Boost Economic Growth – Reverse Biodiversity Declines – Level the Playing Field for UK Farmers**

**SAVE OUR YELLOW FIELDS! – [View the Campaign Here](#)**