

# DAILY MARKET REPORT

## MARKETS – DAILY COMMENTS & MARKET DRIVERS

**MATIF was closed for both Good Friday and Easter Monday, on Thursday May-26 MATIF opened at €510.25 and traded between highs of €511.50 and lows of €505.50, before settling at €505.75, up €1 on Wednesday's settlement.**

- The CBOT was closed on Good Friday, but open yesterday. May'26 soybeans gained 3.2c to settle at \$11.66/bu, soy oil gained 1.01c to settle at 69.95c/lb, whilst soymeal gained \$1.4 to settle at \$316.6/t. **Price Impact – Positive**
- On the Bursa Malaysia, May'26 crude palm oil fell 20RM to settle at 4,779RM. **Price Impact – Negative**
- On the Dalian, May'26 soybeans gained 38CNY to settle at 4,632CNY, soymeal fell 20CNY to settle at 2,838CNY, soy oil gained 38CNY to settle at 8,730CNY. **Price Impact – Mixed**
- Nearby (Jun'26) Brent crude gained 74c to settle at \$109.77/b. **Price Impact – Positive**
- Iran remains the focus for international energy market, the deadline imposed by Trump for Iran to open the Strait of Hormuz is fast approaching at 8.pm EDT Tuesday (0:00 GMT Wednesday). The US is understood to have passed terms to Iran via mediator Pakistan, but Tehran has rejected a ceasefire proposal, instead pushing for a permanent end to the war, and in the meantime has rebuffed pressure to reopen the straits.
- Benchmark European natural gas settled unchanged at €50.04/MWh (May'26). **Price Impact – Mixed**
- AgRural estimates the 25/26 Brazilian soybean crop is 82% harvested so far, up from 75% last week, and 87% last year. **Price Impact – Mixed**
- Canola (OSR) planting has commenced in Australia, the impact of the US-Iran conflict on Australian fertilizer imports from the Middle East will soon become an increasingly prescient concern. **Price Impact – Mixed**
- APK-Inform estimate 26/27 Ukrainian OSR exports at 2.6Mmt, down from 2.74Mmt previously on expectations of increasing domestic demand. Ukraine is usually a key source of EU OSR imports at the beginning of the season. **Price Impact – Positive**

### Hubbards Seeds – Cover, Companions, Forage, Trees & More

Whether it's cover crops ahead of a spring crop, a companion in your OSR, maize for silage, or trees & hedging for structure & biodiversity, we're here to support every part of your rotation.

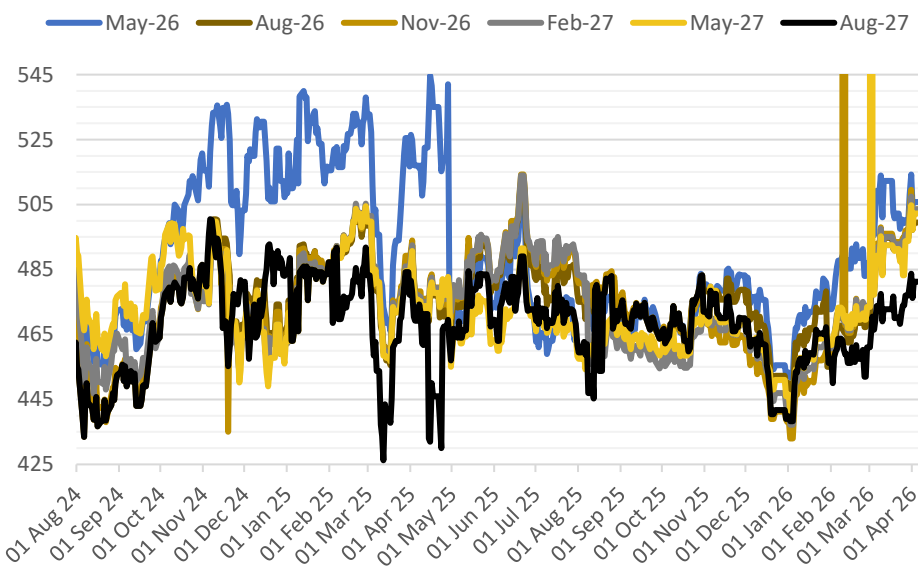
01380 729200 ~ [hello@hubbardsseeds.co.uk](mailto:hello@hubbardsseeds.co.uk)

	Erith	Liverpool	Stratford	Berwick	Montrose	Whitehill / Murphy
Apr-26	£467	POA	£464	POA	POA	POA
May-26	£467	£465	£464	POA	POA	POA
Jun-26	£467	£465	£464	POA	POA	POA
Aug-26	£443	£443	£443	£425	£420	£415
Sep-26	£447	£447	£447	£429	£424	£419
Oct-26	£450	£449	£449	£431	£425	£420
Nov-26	£451	£451	£451	£433	£426	£421



### MARKET TRENDS & CURRENCY

MATIF OSR Daily Settlement €/t



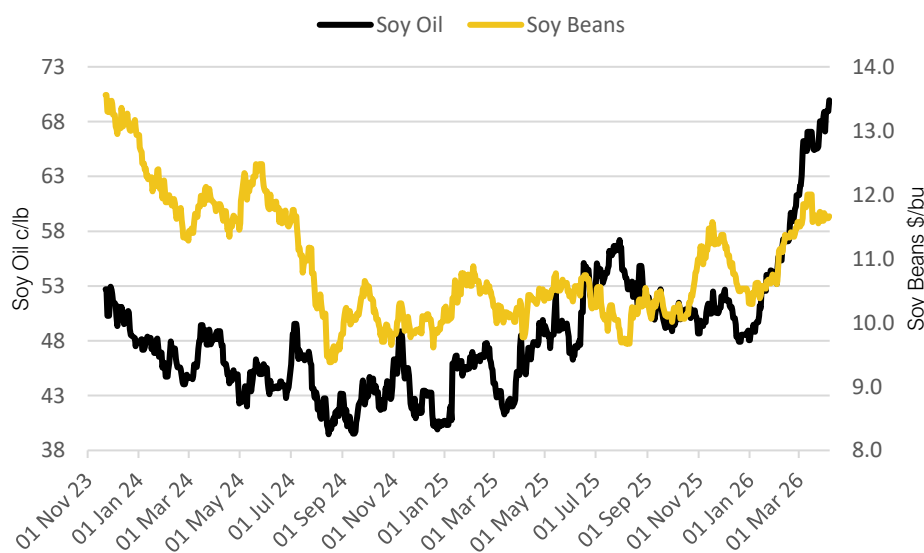
Nearby ICE London Feed Wheat Daily Settlement £/t



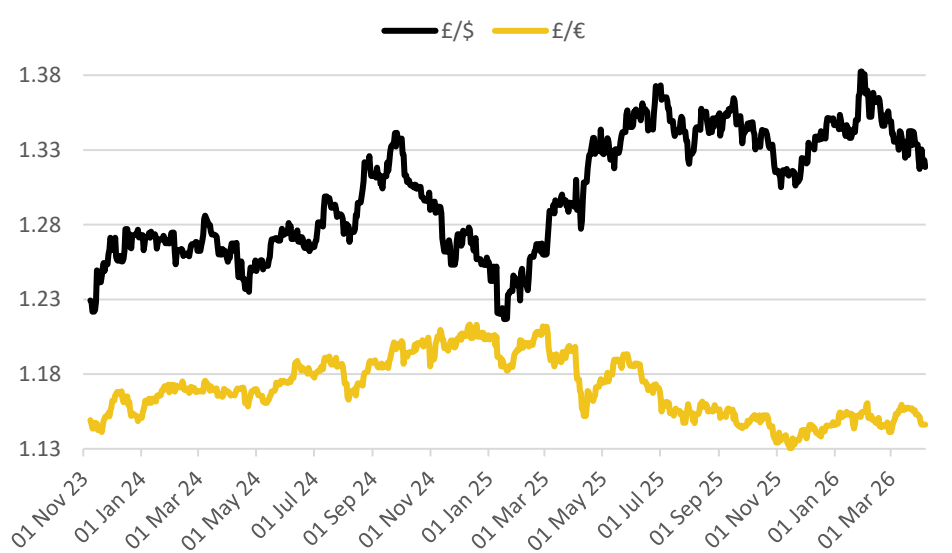
Contract	\$	Month	Daily Change
Soybeans (\$/bu)	\$11.66	May-26	+3.2c
Soy Oil (c/lb)	69.95c	May-26	+1.01c
Soy Meal (\$/T)	\$316.60	May-26	+\$1.40

Delivery Month	£/t	Daily Change
May-26	£175.10	Unch
Nov-26	£184.85	Unch
Jan-27	£188.20	Unch
Mar-27	£191.55	Unch

CBOT US Soy Beans & Soy Oil



Exchange Rates: GBP / USD & GBP / EUR



### THE UNITED OILSEEDS OSR REBOOT5

**Restore UK OSR Self Sufficiency – Boost Economic Growth – Reverse Biodiversity Declines – Level the Playing Field for UK Farmers**

**SAVE OUR YELLOW FIELDS! – [View the Campaign Here](#)**