

DAILY MARKET REPORT

MARKETS – DAILY COMMENTS & MARKET DRIVERS

On Tuesday, Aug'26 MATIF opened at €528.50 and traded between highs of €530 and lows of €522.50, before settling at €525.50, down €2.50 on Monday's settlement.

- On the CBOT, it was a mixed day across the 3 legs of the soy complex. May'26 soybeans fell 11.6c to settle at \$11.95/bu, soy oil gained 0.38c to settle at 78.40c/lb, whilst soymeal gained \$1.9 to settle at \$322.6/t. **Price Impact – Mixed**
- On the Bursa Malaysia, Jul'26 crude palm oil gained 88RM to settle at 4,710RM. **Price Impact – Positive**
- On the Dalian, May'26 soybeans fell 55CNY to settle at 4,877CNY, soymeal fell 23CNY to settle at 2,831CNY, whilst soy oil gained 39CNY to settle at 8,630CNY.
- Nearby (Jul'26) Brent crude fell \$4.57 to settle at \$109.87/b. **Price Impact – Negative**
- Brent crude has continued to trade lower today, dipping below \$100/b after Axios has reported that America believes it could be closing in on a memorandum of understanding with Iran over the subject of peace talks.
- Benchmark European natural gas fell €1.22 to settle at €46.93/MWh (Jun'26). **Price Impact – Positive**
- EU Commission data places 25/26 EU OSR imports at 4.26Mmt so far this season, down from 5.96Mmt at the same time last season. **Price Impact – Mixed**
- EU Commission data places 25/26 EU soybean imports at 11.09Mmt so far this season, down from 12.12Mmt at the same time last season. 25/26 soymeal imports are estimated at 14.96Mmt so far, down from 15.99Mmt last season. Meanwhile, 25/26 palm oil imports are estimated at 2.41Mmt, down from 2.52Mmt last season. **Price Impact – Mixed**

Hubbards Seeds – Cover, Companions, Forage, Trees & More

Whether it's cover crops ahead of a spring crop, a companion in your OSR, maize for silage, or trees & hedging for structure & biodiversity, we're here to support every part of your rotation.

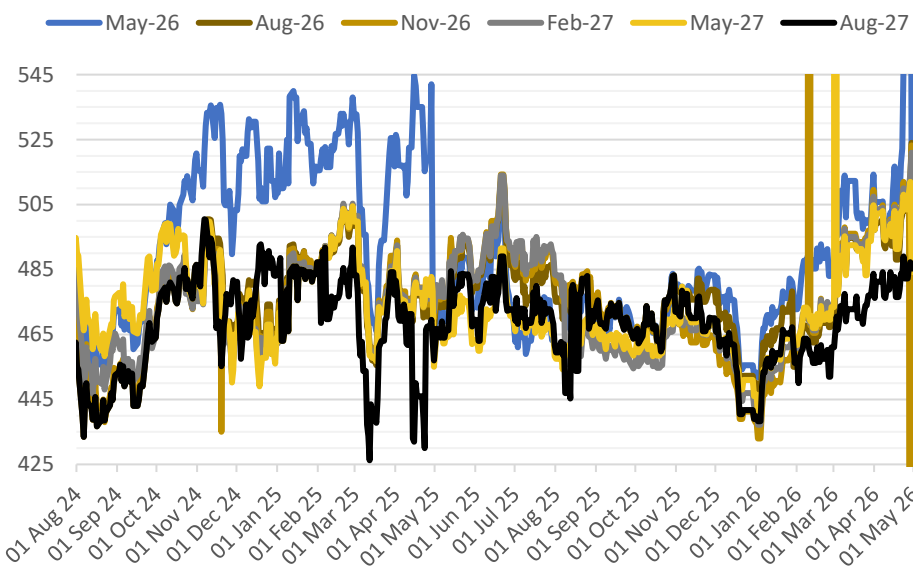
01380 729200 ~ hello@hubbardsseeds.co.uk

	Erith	Liverpool	Stratford	Berwick	Montrose	Whitehill / Murphy
Aug-26	£449	£447	£448	£429	£427	£421
Sep-26	£453	£451	£452	£433	£431	£425
Oct-26	£456	£454	£455	£434	£433	£427
Nov-26	£458	£456	£457	£435	£435	£429



MARKET TRENDS & CURRENCY

MATIF OSR Daily Settlement €/t



Nearby ICE London Feed Wheat Daily Settlement £/t



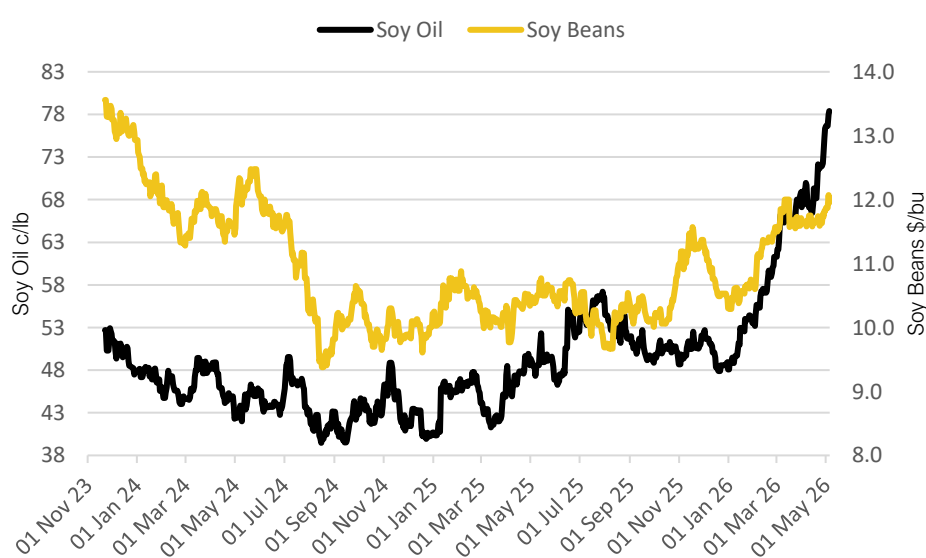
CBOT US Soy Complex – Settlement 06.05.2026

Contract	\$	Month	Daily Change
Soybeans (\$/bu)	\$11.95	May-26	-11.6c
Soy Oil (c/lb)	78.40c	May-26	+0.38c
Soy Meal (\$/T)	\$322.60	May-26	+\$1.90

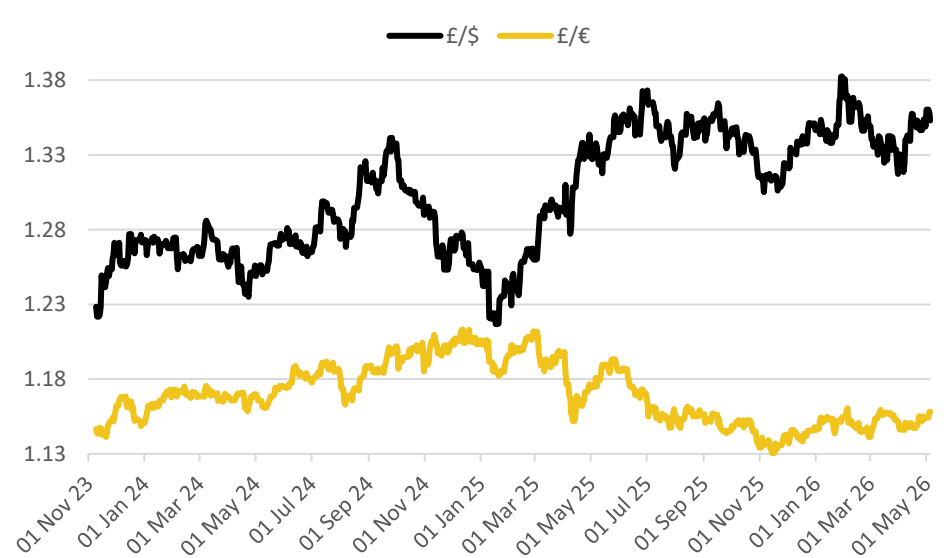
ICE London Feed Wheat – Settlement 06.05.2026

Delivery Month	£/t	Daily Change
May-26	£186.80	–£1.20
Nov-26	£186.40	–£1.20
Jan-27	£189.60	-1.20
Mar-27	£192.80	–£1.20

CBOT US Soy Beans & Soy Oil



Exchange Rates: GBP / USD & GBP / EUR



THE UNITED OILSEEDS OSR REBOOT5

Restore UK OSR Self Sufficiency – Boost Economic Growth – Reverse Biodiversity Declines – Level the Playing Field for UK Farmers

SAVE OUR YELLOW FIELDS! – [View the Campaign Here](#)