

## DAILY MARKET REPORT

### MARKETS – DAILY COMMENTS & MARKET DRIVERS

**On Monday, Aug'26 Matif opened at €517.25 and traded between highs of €528.75 and lows of €516.50, before settling at €528, up €7.25 on Thursday's settlement (Matif was closed on Friday for the International Workers' Day public holiday).**

- On the CBOT, all three legs of the soy complex settled higher. May'26 soybeans gained 19.6c to settle at \$12.07/bu, soy oil gained 1.37c to settle at 78.02c/lb, whilst soymeal fell 10c to settle at \$320.7/t. **Price Impact – Positive**
- On the Bursa Malaysia, Jul'26 crude palm oil gained 52RM to settle at 4,622RM. **Price Impact – Positive**
- On the Dalian, May'26 soybeans gained 25CNY to settle at 4,932CNY, soymeal fell 7CNY to settle at 2,854CNY, soy oil gained 41CNY to settle at 8,591CNY. **Price Impact – Mixed**
- Nearby (Jul'26) Brent crude gained \$6.27 to settle at \$114.44/b. **Price Impact – Positive**
- The June Brent contract expired at the end of last week, the June contract had risen \$3/b across last week, whilst the July contract rose \$9/b. Last week also saw a huge draw, in excess of 24m/b, from US stockpiles, with 17m/b from commercial stocks and over 7m/b from the US Strategic Petroleum Reserve.
- Benchmark European natural gas gained €2.38 to settle at €48.14/MWh (Jun'26). **Price Impact – Negative**
- StoneX have increased their estimate for 25/26 Brazilian soybean production from 179.66Mmt to 181.62Mmt. **Price Impact – Negative**
- US soybean plantings are now 33% complete, below estimates of 35%, up from 23% last week, 28% last year, and above the 5yr average of 23%. **Price Impact – Mixed**
- US winter wheat conditions 31% good to excellent, above estimates of 30%, up from 30% the previous week, down from 51% the previous year and below the 5-year average of 41%. **Price Impact – Mixed**
- US spring wheat area 32% planted so far, below estimates of 33%, up from 19% the previous week, down from 42% the previous year, and below the 5-year average of 35%. **Price Impact – Positive**

### Hubbards Seeds – Cover, Companions, Forage, Trees & More

Whether it's cover crops ahead of a spring crop, a companion in your OSR, maize for silage, or trees & hedging for structure & biodiversity, we're here to support every part of your rotation.

	Erith	Liverpool	Stratford	Berwick	Montrose	Whitehill / Murphy
<b>Aug-26</b>	£454	£452	£453	£434	£432	£426
<b>Sep-26</b>	£458	£456	£457	£438	£436	£430
<b>Oct-26</b>	£461	£459	£460	£439	£438	£432
<b>Nov-26</b>	£463	£461	£462	£440	£440	£434

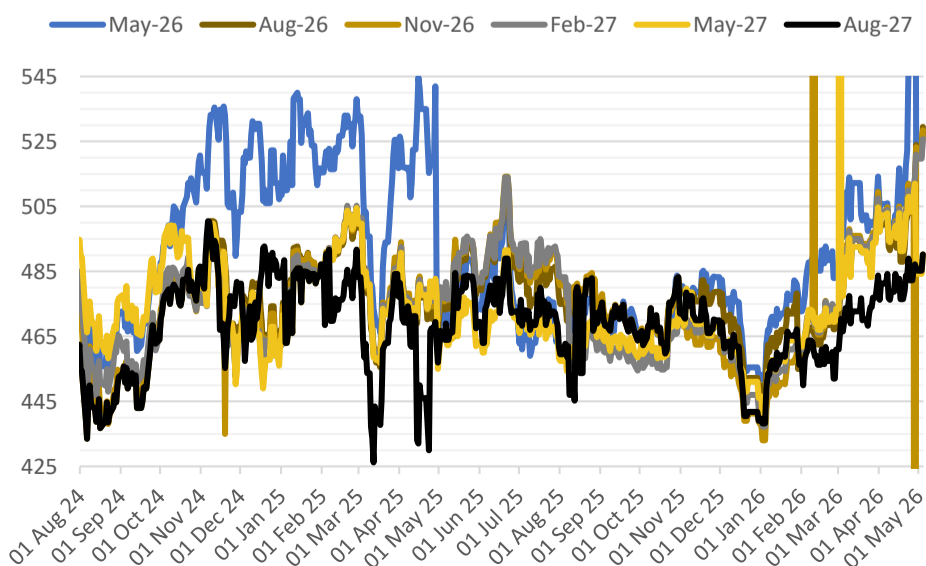


### MARKET TRENDS & CURRENCY

Contract	\$	Month	Daily Change
Soybeans (\$/bu)	\$11.73	May-26	-4.2c
Soy Oil (c/lb)	73.38c	May-26	+1.12c
Soy Meal (\$/T)	\$333.4	May-26	-\$0.40

Delivery Month	£/t	Daily Change
May-26	£186.20	+£3.30
Nov-26	£189.25	+£4.30
Jan-27	£192.40	+£4.30
Mar-27	£195.55	+£4.30

MATIF OSR Daily Settlement €/t



Nearby ICE London Feed Wheat Daily Settlement £/t

