

# DAILY MARKET REPORT

## MARKETS – DAILY COMMENTS & MARKET DRIVERS

**On Wednesday, Aug'26 MATIF opened at €532 and traded between highs of €535.50 and lows of €530, before settling at €533.75, up €6.25 on Tuesday's settlement.**

- On the CBOT, it was a mixed day across the 3 legs of the soy complex. Jul'26 soybeans fell 11.2c to settle at \$11.54/bu, soy oil gained 0.3c to settle at 78.71c/lb, whilst soymeal fell \$5.4 to settle at \$320.8/t. **Price Impact – Mixed**
- On the Bursa Malaysia, Aug'26 crude palm oil gained 142RM to settle at 4,677RM. **Price Impact – Positive**
- On the Dalian, Sep'26 soybeans fell 12CNY to settle at 4,776CNY, soymeal fell 13CNY to settle at 2,955CNY, whilst soy oil settled unchanged at 8,553CNY. **Price Impact – Mixed**
- Nearby (Aug'26) Brent crude gained \$1.81 to settle at \$97.81/b. **Price Impact – Positive**
- Brent crude gained on news that Iran fired missiles towards Kuwait and Bahrain yesterday, attacks which were either thwarted or failed. Crude has traded down this morning on news that Israel & Lebanon have reached ceasefire terms.
- Benchmark European natural gas gained \$1.26 to settle at \$48.86/MWh (Jul'26). **Price Impact – Negative**
- LSEG: 26/27 EU + UK wheat production estimated @ 149.3 M t, unchanged from the previous month. **Price Impact – Mixed**
- LSEG: 26/27 Ukrainian wheat production estimated @ 22.8 M t, unchanged from the previous month. **Price Impact – Mixed**
- LSEG: 26/27 Canadian wheat production estimated @ 35.8 M t, unchanged from the previous month. **Price Impact – Mixed**
- Anec: Jun'26 Brazilian soybean exports estimated @ 12.36 M t, down from 13.79 the previous year. **Price Impact – Positive**

### Hubbards Seeds – Cover, Companions, Forage, Trees & More

Whether it's cover crops ahead of a spring crop, a companion in your OSR, maize for silage, or trees & hedging for structure & biodiversity, we're here to support every part of your rotation.

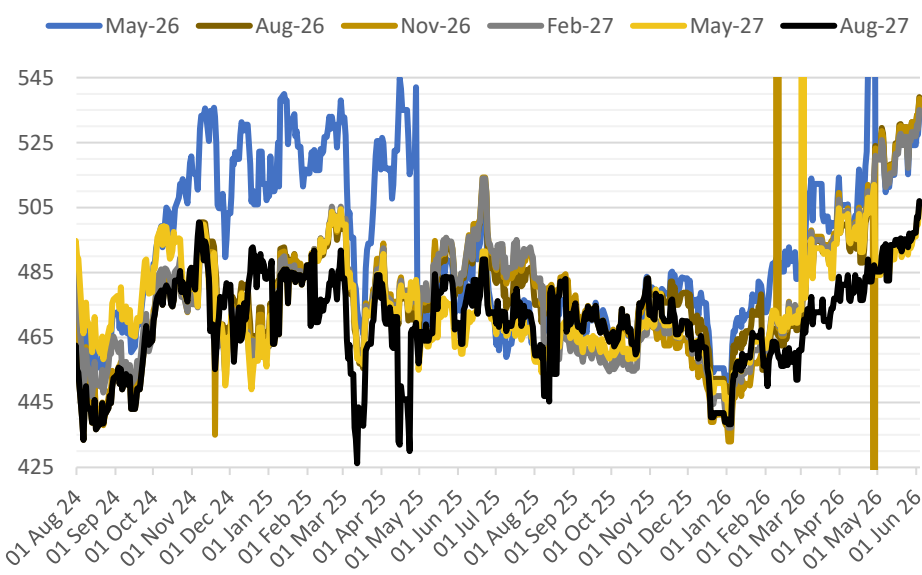
01380 729200 ~ [hello@hubbardsseeds.co.uk](mailto:hello@hubbardsseeds.co.uk)

	Erith	Liverpool	Stratford		Berwick	Montrose	Whitehill / Murphy
<b>Aug-26</b>	£457	£455	£456		£439	£435	£429
<b>Sep-26</b>	£462	£460	£461		£443	£437	£431
<b>Oct-26</b>	£464	£462	£463		£445	£439	£433
<b>Nov-26</b>	£466	£464	£465		£447	£441	£435
<b>Dec-26</b>	£467	£465	£466		£448	£442	£437



### MARKET TRENDS & CURRENCY

MATIF OSR Daily Settlement €/t



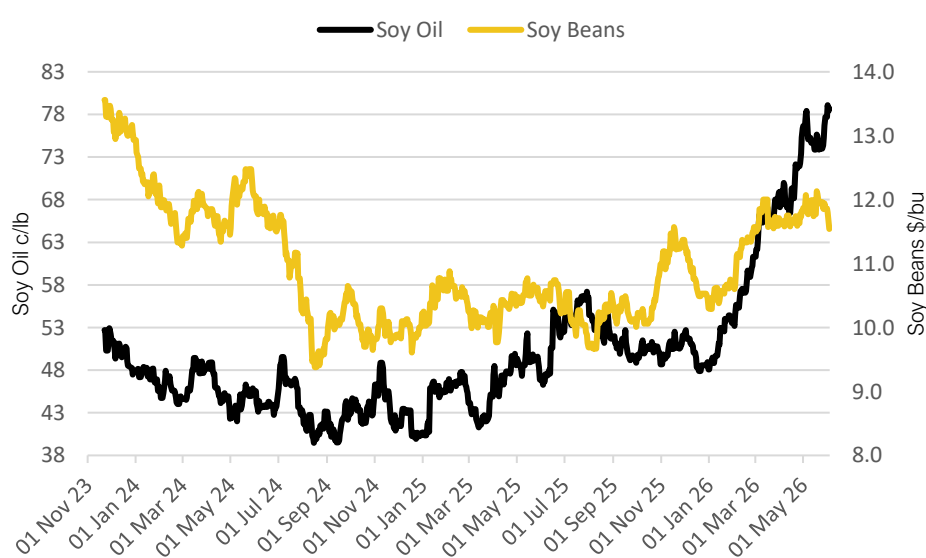
Nearby ICE London Feed Wheat Daily Settlement £/t



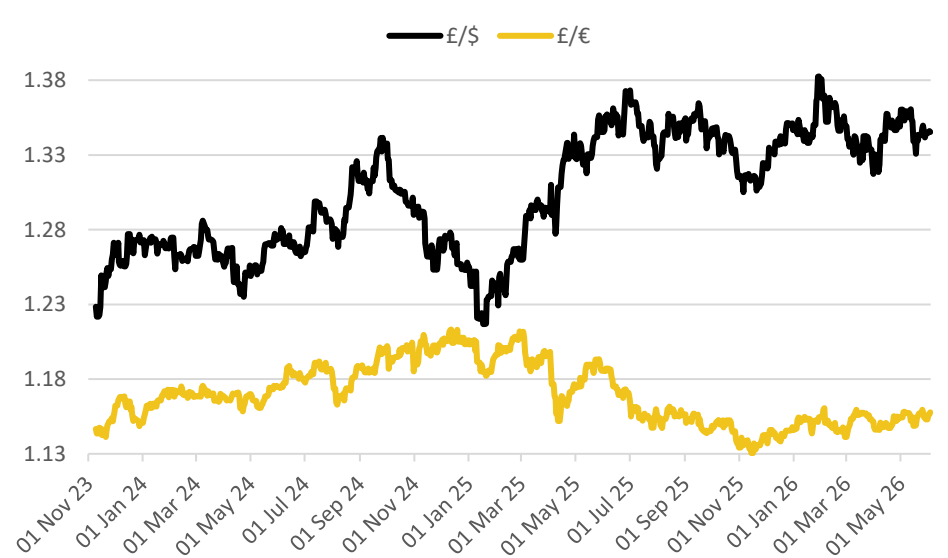
CBOT US Soy Complex – Settlement 03.06.2026			
Contract	\$	Month	Daily Change
Soybeans (\$/bu)	\$11.54	Jul-26	-11.2c
Soy Oil (c/lb)	78.71c	Jul-26	+0.30c
Soy Meal (\$/T)	\$320.8	Jul-26	-\$5.4

ICE London Feed Wheat – Settlement 03.06.2026		
Delivery Month	£/t	Daily Change
Nov-26	£182.50	–£1.75
Jan-27	£186.00	–£1.70
Mar-27	£189.50	–£1.65
May-27	£193.00	–£1.75

CBOT US Soy Beans & Soy Oil



Exchange Rates: GBP / USD & GBP / EUR



### THE UNITED OILSEEDS OSR REBOOT5

**Restore UK OSR Self Sufficiency – Boost Economic Growth – Reverse Biodiversity Declines – Level the Playing Field for UK Farmers**

**SAVE OUR YELLOW FIELDS! – [View the Campaign Here](#)**