

DAILY MARKET REPORT

MARKETS – DAILY COMMENTS & MARKET DRIVERS

On Tuesday, Aug'26 MATIF opened at €527 and traded between highs of €528.25 and lows of €523.25, before settling at €527.50, down €1 on Monday's settlement.

- On the CBOT, all 3 legs of the soy complex settled lower yesterday. Jul'26 soybeans fell 15.4c to settle at \$11.65/bu, soy oil fell 0.68c to settle at 78.41c/lb, whilst soymeal fell 30c to settle at \$326.2/t. **Price Impact – Negative**
- On the Bursa Malaysia, Aug'26 crude palm oil fell 2RM to settle at 4,535RM. **Price Impact – Negative**
- On the Dalian, Jul'26 soybeans gained 48CNY to settle at 4,755CNY, soymeal fell 11CNY to settle at 2,797CNY, soy oil fell 12CNY to settle at 8,501CNY. **Price Impact – Mixed**
- Nearby (Aug'26) Brent crude gained \$1.02 to settle at \$96/b. **Price Impact – Positive**
- Brent made gains yesterday as uncertainty continues over the ability of Washington and Tehran to reach deal terms, after Israel continued strikes on Lebanon and Iran launched missiles towards Kuwait and Bahrain yesterday.
- Benchmark European natural gas fell €1.48 to settle at €47.61/MWh (Jul'26). **Price Impact – Positive**
- EU Commission data places 25/26 EU OSR imports at 4.83Mmt so far this season, down from 6.75Mmt this time last season. **Price Impact – Positive**
- SovEcon estimate 25/26 Russian wheat exports at 46.8Mmt, down from 47.4Mmt in previous estimates. 26/27 exports are estimated at 46.3Mmt, up from 45.2Mmt in previous estimates. **Price Impact – Mixed**
- Abares estimates 26/27 Australian wheat production at 26.7Mmt, down 26% from last season. **Price Impact – Positive**
- Abares estimates 26/27 Australian canola (OSR) production at 6.2Mmt, down 20% from last season. **Price Impact – Positive**

Hubbards Seeds – Cover, Companions, Forage, Trees & More

Whether it's cover crops ahead of a spring crop, a companion in your OSR, maize for silage, or trees & hedging for structure & biodiversity, we're here to support every part of your rotation.

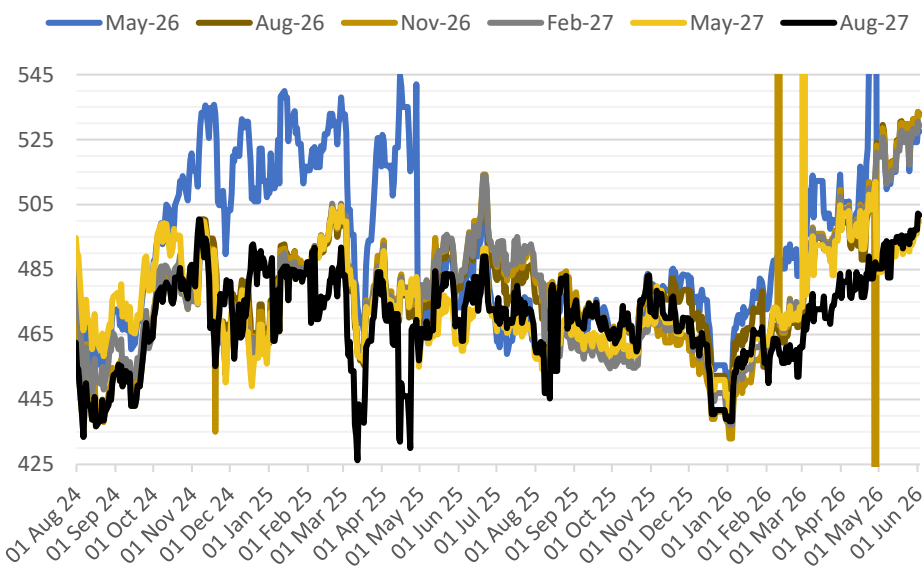
01380 729200 ~ hello@hubbardsseeds.co.uk

	Erith	Liverpool	Stratford		Berwick	Montrose	Whitehill / Murphy
Aug-26	£463	£461	£462		£445	£441	£435
Sep-26	£468	£466	£467		£449	£443	£437
Oct-26	£470	£468	£469		£451	£445	£439
Nov-26	£472	£470	£471		£453	£447	£441
Dec-26	£473	£471	£472		£454	£448	£443



MARKET TRENDS & CURRENCY

MATIF OSR Daily Settlement €/t



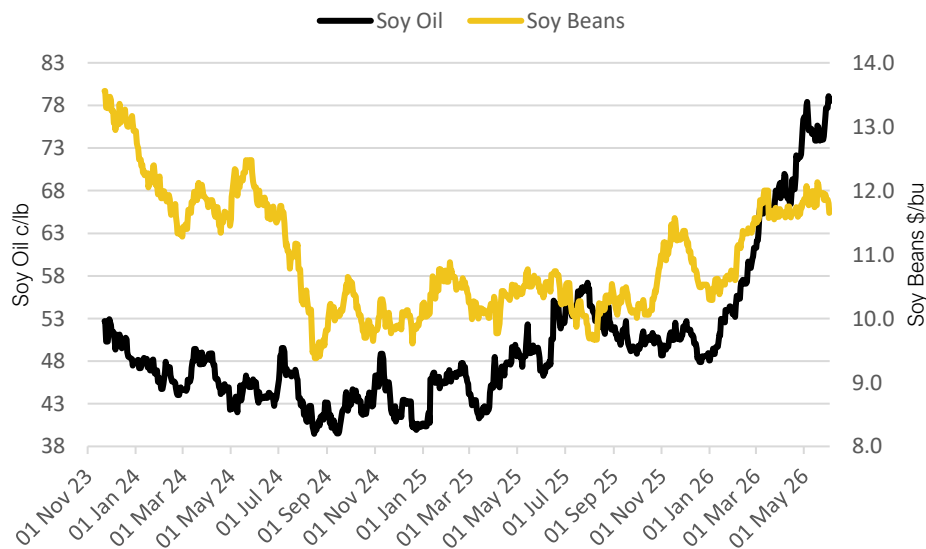
Nearby ICE London Feed Wheat Daily Settlement £/t



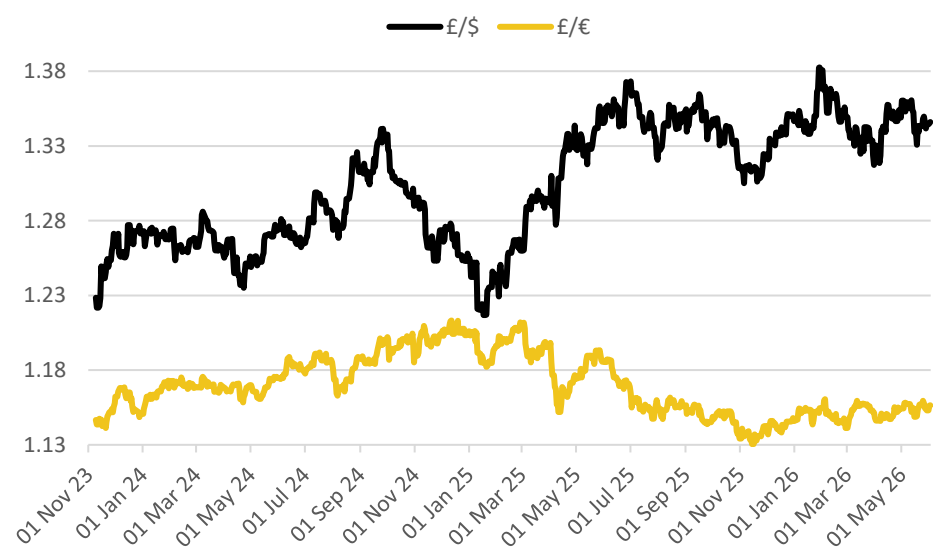
Contract	\$	Month	Daily Change
Soybeans (\$/bu)	\$11.65	Jul-26	-15.4c
Soy Oil (c/lb)	78.41c	Jul-26	-0.68c
Soy Meal (\$/T)	\$326.2	Jul-26	-\$0.30

Delivery Month	£/t	Daily Change
Nov-26	£184.25	–£1.75
Jan-27	£187.70	–£1.55
Mar-27	£191.15	–£1.35
May-27	£194.75	–£1.25

CBOT US Soy Beans & Soy Oil



Exchange Rates: GBP / USD & GBP / EUR



THE UNITED OILSEEDS OSR REBOOT5

Restore UK OSR Self Sufficiency – Boost Economic Growth – Reverse Biodiversity Declines – Level the Playing Field for UK Farmers

SAVE OUR YELLOW FIELDS! – [View the Campaign Here](#)