

**DAILY MARKET REPORT**  
MARKETS – DAILY COMMENTS & MARKET DRIVERS

**On Wednesday, Aug'26 MATIF opened at €506.50 and traded between highs of €510 and lows of €503.25, before settling at €508.75, up €3.5 on Tuesday's settlement.**

- On the CBOT, it was a mixed day across the three legs of the soy complex. Aug'26 soybeans gained 9c to settle at \$11.33/bu, soy oil fell 1.93c to settle at 66.93c/lb, whilst soymeal gained \$1.4 to settle at \$305.3/t. **Price Impact – Mixed**
- On the Bursa Malaysia, Sep'26 crude palm oil gained 11RM to settle at 4,557RM. **Price Impact – Positive**
- On the Dalian, Sep'26 soybeans gained 17CNY to settle at 4,752CNY, soymeal gained 27CNY to settle at 2,978CNY, whilst soy oil gained 35CNY to settle at 8,442CNY. **Price Impact – Positive**
- Nearby (Sep'26) Brent crude fell \$1.38 to settle at \$71.57/b. **Price Impact – Negative**
- Brent crude fell for the third consecutive day yesterday, tanker traffic continues to flow through the Strait of Hormuz, whilst progress in the indirect talks between US-Iran are understood to be making good progress.
- Benchmark European natural gas fell 67c to settle at €42.78/MWh (Aug'26). **Price Impact – Mixed**
- Euronext (MATIF) commitment of traders data shows rapeseed specs are now +61.92k lots long, up +4.21k lots from the previous week. **Price Impact – Positive**
- USDA May'26 soybean crush volume came in at 213.1m/bu (a new record for May), below estimates of 214.9m/bu, down from 218.5m/bu last month, and up from 203.7m/bu last year. **Price Impact – Positive**
- StatsCan have updated their estimate for 2026 Canadian canola area to 23.4m/ha, above estimates of 22.83m/ha, up from 21.839m/ha in last quarter's estimate, and up from 21.623m/ha last year. **Price Impact – Negative**
- AGPM estimate that French maize output may fall to 9.5Mmt, a 26yr low, by as much as 30%, due to effects of 2 recent heatwaves. **Price Impact – Mixed**

**Hubbards Seeds – Cover, Companions, Forage, Trees & More**

Whether it's cover crops ahead of a spring crop, a companion in your OSR, maize for silage, or trees & hedging for structure & biodiversity, we're here to support every part of your rotation.

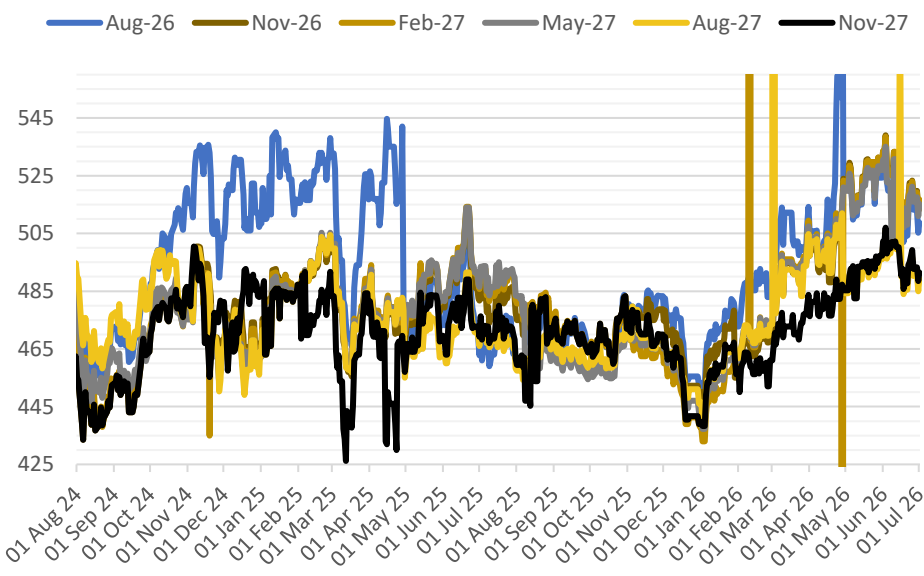
01380 729200 ~ hello@hubbardsseeds.co.uk

	Erith	Liverpool	Stratford	Berwick	Montrose	Whitehill / Overbrae
<b>Jul-26</b>	£436	£434	£435	£418	£414	£408
<b>Aug-26</b>	£436	£434	£435	£418	£414	£408
<b>Sep-26</b>	£441	£439	£440	£422	£416	£410
<b>Oct-26</b>	£443	£441	£442	£424	£418	£412
<b>Nov-26</b>	£445	£443	£444	£426	£420	£414
<b>Dec-26</b>	£446	£444	£445	£427	£421	£415
<b>Jan-27</b>	£446	£444	£445	£427	£421	£415
<b>Feb-27</b>	£446	£444	£445	£427	£421	£415
<b>NO CARRY ONWARDS</b>						



**MARKET TRENDS & CURRENCY**

MATIF OSR Daily Settlement €/t



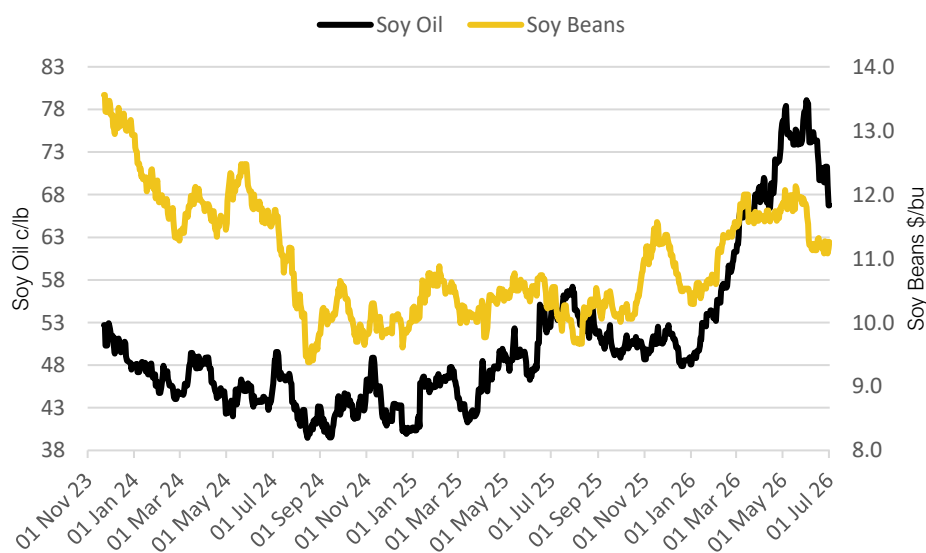
Nearby ICE London Feed Wheat Daily Settlement £/t



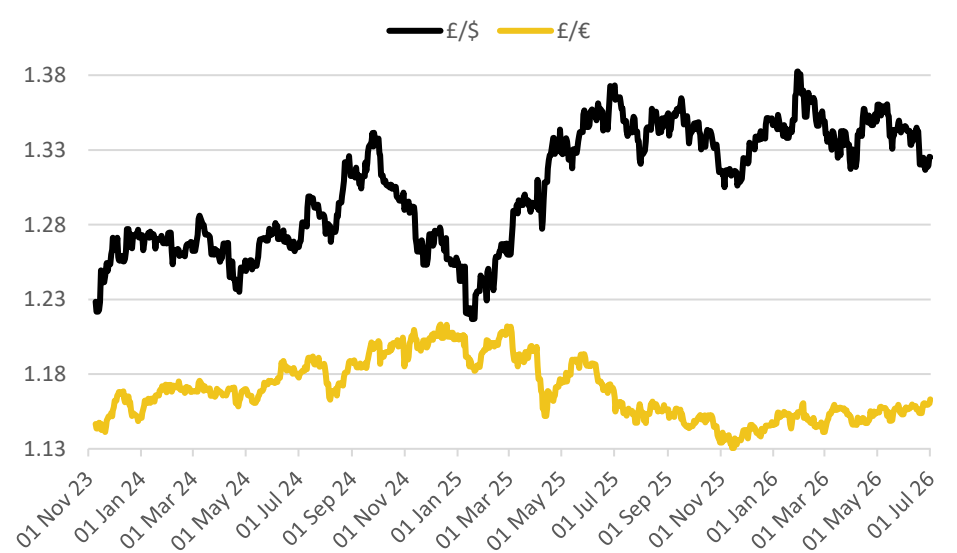
CBOT US Soy Complex – Settlement 01.07.2026			
Contract	\$	Month	Daily Change
Soybeans (\$/bu)	\$11.33	Aug-26	+9.00c
Soy Oil (c/lb)	66.93c	Aug-26	-1.93c
Soy Meal (\$/T)	\$305.30	Aug-26	+\$1.40

ICE London Feed Wheat – Settlement 01.07.2026		
Delivery Month	£/t	Daily Change
Nov-26	£179.50	+£2.25
Jan-27	£183.00	+£2.25
Mar-27	£186.0	+£2.25
May-27	£189.75	+£2.25

CBOT US Soy Beans & Soy Oil



Exchange Rates: GBP / USD & GBP / EUR



**THE UNITED OILSEEDS OSR REBOOT5**

**Restore UK OSR Self Sufficiency – Boost Economic Growth – Reverse Biodiversity Declines – Level the Playing Field for UK Farmers**  
SAVE OUR YELLOW FIELDS! – [View the Campaign Here](#)