

DAILY MARKET REPORT

MARKETS – DAILY COMMENTS & MARKET DRIVERS

On Monday, Aug'26 MATIF opened at €526.50 and traded between highs of €529.75 and lows of €522.75, before settling at €528.50, up €4.25 on Friday's settlement.

- On the CBOT, it was a mixed day across the three legs of the soy complex. Jul'26 soybeans fell 6c to settle at \$11.80/bu, soy oil gained 1.37c to settle at 79.09c/lb, whilst soymeal fell \$3.3 to settle at \$326.5/t. **Price Impact – Mixed**
- On the Bursa Malaysia, Aug'26 crude palm oil fell 2RM to settle at 4,535RM. **Price Impact – Negative**
- On the Dalian, Jul'26 soybeans fell 6CNY to settle at 4,707CNY, soymeal fell 3CNY to settle at 2,808CNY, whilst soy oil fell 17CNY to settle at 8,513CNY. **Price Impact – Negative**
- Nearby (Aug'26) Brent crude gained \$3.86 to settle at \$94.98/b. **Price Impact – Positive**
- Brent gained approximately 5% on Monday as markets weighed continued ambiguity over the state of negotiations between the US and Iran. Oil prices have fallen again this morning after Trump told reporters that talks were ongoing.
- Benchmark European natural gas gained €3.09 to settle at €49.09/MWh (Jul'26). **Price Impact – Negative**
- Abares estimate 26/27 Australian canola (OSR) production at 6.2Mmt, down 20% from last season. **Price Impact – Positive**
- StoneX estimate 25/26 Brazilian soybean exports at 181.8Mmt, up from 181.62Mmt previously. **Price Impact – Mixed**
- US soybean plantings are 87% complete, below estimates of 89%, up from 79% last week, 83% last year, and above the 5yr average of 80%. **Price Impact – Mixed**
- US soybean crop conditions are currently 66% good to excellent, below estimates of 68%, down from 67% last year, and below the 5yr average of 68%. **Price Impact – Mixed**
- USDA estimates Apr'26 US soybean crush @ 218.4m/bu, above estimates of 214.7m/bu, down from 227.4m/bu last month, and up from 202.4m/bu last year. **Price Impact – Mixed**

Hubbards Seeds – Cover, Companions, Forage, Trees & More

Whether it's cover crops ahead of a spring crop, a companion in your OSR, maize for silage, or trees & hedging for structure & biodiversity, we're here to support every part of your rotation.

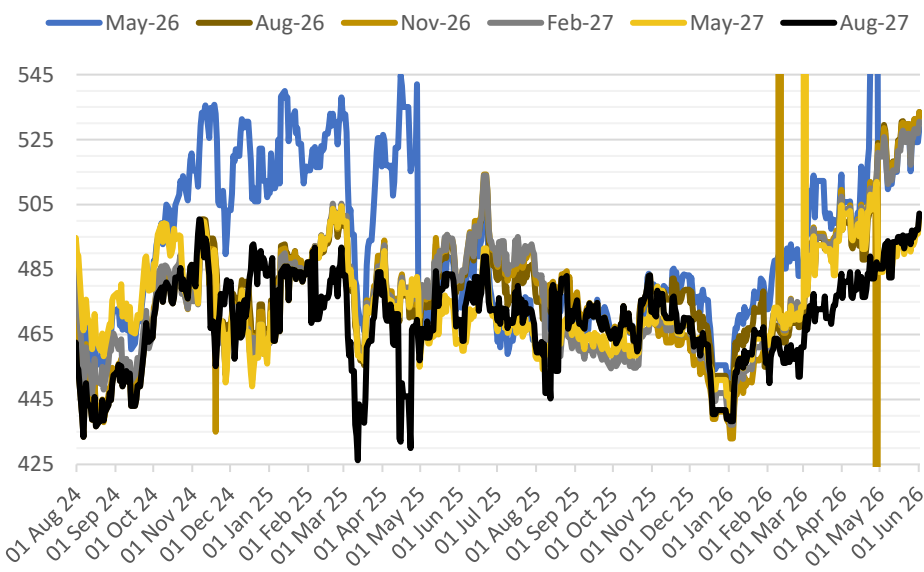
01380 729200 ~ hello@hubbardsseeds.co.uk

	Erith	Liverpool	Stratford	Berwick	Montrose	Whitehill / Murphy
Aug-26	£459	£457	£458	£441	£437	£431
Sep-26	£464	£462	£463	£445	£439	£433
Oct-26	£466	£464	£465	£447	£441	£435
Nov-26	£468	£466	£467	£449	£443	£437
Dec-26	£469	£467	£468	£450	£444	£438



MARKET TRENDS & CURRENCY

MATIF OSR Daily Settlement €/t



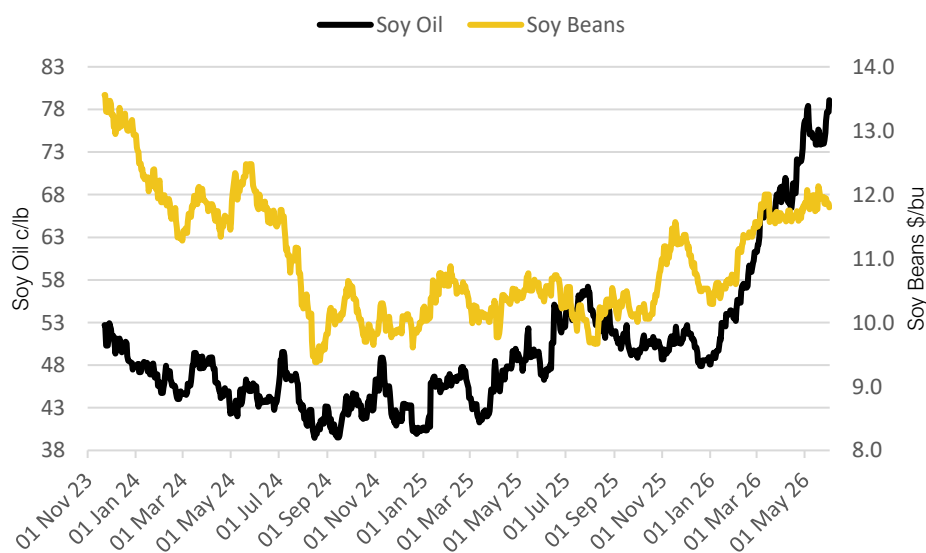
Nearby ICE London Feed Wheat Daily Settlement £/t



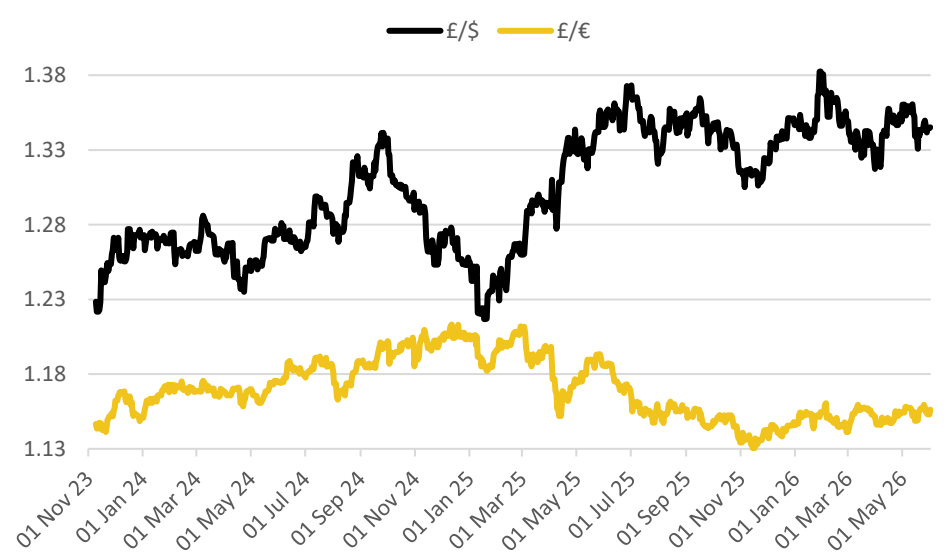
Contract	\$	Month	Daily Change
Soybeans (\$/bu)	\$11.80	Jul-26	-6.00c
Soy Oil (c/lb)	79.09c	Jul-26	+1.37c
Soy Meal (\$/T)	\$326.50	Jul-26	-\$3.30

Delivery Month	£/t	Daily Change
Nov-26	£186.00	-£0.75
Jan-27	£189.25	-£0.75
Mar-27	£192.50	-£0.75
May-27	£196.00	-£0.90

CBOT US Soy Beans & Soy Oil



Exchange Rates: GBP / USD & GBP / EUR



THE UNITED OILSEEDS OSR REBOOT5

Restore UK OSR Self Sufficiency – Boost Economic Growth – Reverse Biodiversity Declines – Level the Playing Field for UK Farmers

SAVE OUR YELLOW FIELDS! – [View the Campaign Here](#)