

# DAILY MARKET REPORT

## MARKETS – DAILY COMMENTS & MARKET DRIVERS

**On Wednesday, May-26 MATIF opened at €509.25 and traded between highs of €511.50 and lows of €503.50, before settling at €504.75, up €9.5 on Tuesday's settlement.**

- On the CBOT, it was a mixed day across the three legs of the soy complex. May'26 soybeans fell 2.4c to settle at \$11.68/bu, soy oil fell 1.77c to settle at 67.11c/lb, whilst soymeal gained \$1.8 to settle at \$318.2/t. **Price Impact – Mixed**
- On the Bursa Malaysia, May'26 crude palm oil fell 64RM to settle at 4,733RM. **Price Impact – Negative**
- On the Dalian, May'26 soybeans fell 35CNY to settle at 4,601CNY, soymeal fell 28CNY to settle at 2,871CNY, whilst soy oil fell 72CNY to settle at 8,656CNY. **Price Impact – Negative**
- Nearby (Jun'26) Brent crude fell \$2.81 to settle at \$101.16/b. **Price Impact – Mixed**
- Brent remains highly volatile with traders following each statement from President Trump closely.
- Benchmark European natural gas fell €3.24 to settle at €47.51/b (May'26). **Price Impact – Mixed**
- StoneX estimate 25/26 Brazilian soybean production at 179.7Mmt, up from 177.8Mmt previously. **Price Impact – Negative**
- Canola planting has commenced in Australia. **Price Impact – Mixed**
- USDA estimate Feb'26 US soybean crush at 214.2m/bu, just below estimates of 214.3m/bu, down from 227.8m/bu in Jan'26 but up from 189.6m/bu. **Price Impact – Mixed**
- Buenos Aires Grains Exchange estimate 88% of the Argentinian soybean area has optimal water conditions. **Price Impact – Mixed**
- GAPKI estimate 2026 Indonesian palm oil exports at 30Mmt, down from 32Mmt last year. Biodiesel feedstock demand is estimated at 15Mmt up from 13Mmt last year. **Price Impact – Mixed**

### Hubbards Seeds – Cover, Companions, Forage, Trees & More

Whether it's cover crops ahead of a spring crop, a companion in your OSR, maize for silage, or trees & hedging for structure & biodiversity, we're here to support every part of your rotation.

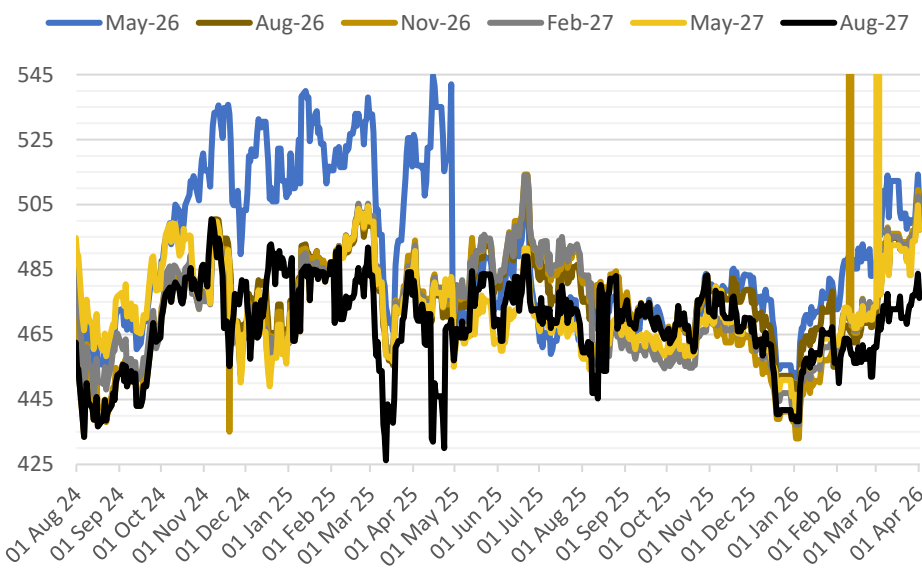
01380 729200 ~ [hello@hubbardsseeds.co.uk](mailto:hello@hubbardsseeds.co.uk)

	Erith	Liverpool	Stratford
<b>Apr-26</b>	£467	POA	£464
<b>May-26</b>	£467	£465	£464
<b>Jun-26</b>	£467	£465	£464
<b>Aug-26</b>	£445	£443	£443
<b>Sep-26</b>	£449	£447	£447
<b>Oct-26</b>	£451	£449	£449
<b>Nov-26</b>	£453	£451	£451



### MARKET TRENDS & CURRENCY

MATIF OSR Daily Settlement €/t



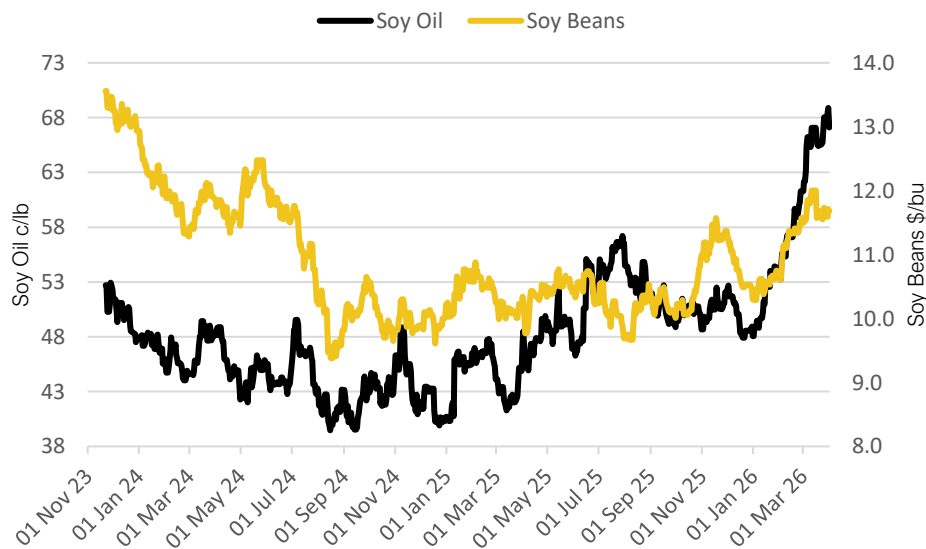
Nearby ICE London Feed Wheat Daily Settlement £/t



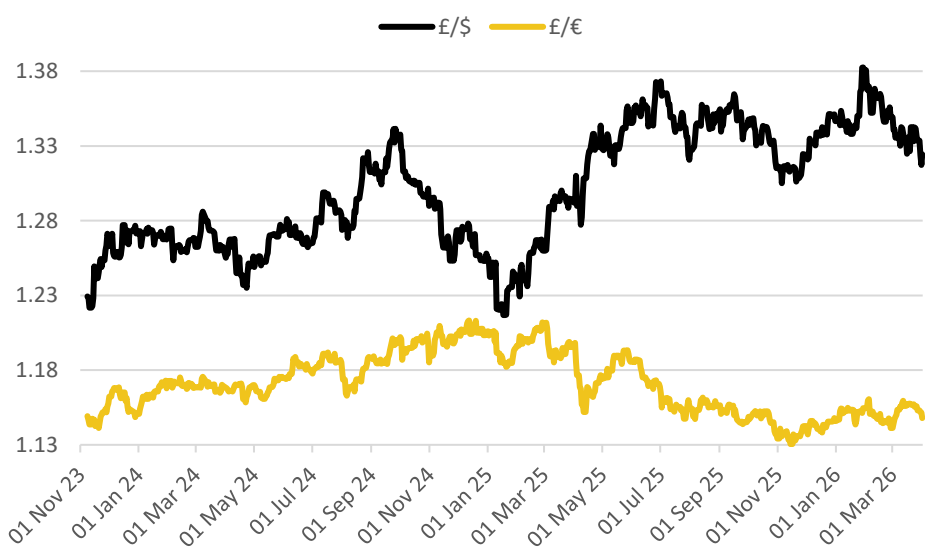
CBOT US Soy Complex – Settlement 01.04.2026			
Contract	\$	Month	Daily Change
Soybeans (\$/bu)	\$11.68	May-26	-2.4c
Soy Oil (c/lb)	67.11c	May-26	-1.77c
Soy Meal (\$/T)	\$318.20	May-26	+\$1.80

ICE London Feed Wheat – Settlement 01.04.2026		
Delivery Month	£/t	Daily Change
May-26	£173.20	–£2.55
Nov-26	£183.25	–£3.75
Jan-27	£186.50	–£3.65
Mar-27	£189.75	–£3.55

CBOT US Soy Beans & Soy Oil



Exchange Rates: GBP / USD & GBP / EUR



### THE UNITED OILSEEDS OSR REBOOT5

**Restore UK OSR Self Sufficiency – Boost Economic Growth – Reverse Biodiversity Declines – Level the Playing Field for UK Farmers**

**SAVE OUR YELLOW FIELDS! – [View the Campaign Here](#)**