

DAILY MARKET REPORT
MARKETS – DAILY COMMENTS & MARKET DRIVERS

On Tuesday, Aug'26 MATIF opened at €511, and traded between highs of €512.50 and lows of €504.50, before settling at €505.25, down €7.5 on Monday's settlement.

- On the CBOT, it was a mixed day across the three legs of the soy complex. Jul'26 soybeans gained 8c to settle at \$11.16/bu, soyoil fell 2.33c to settle at 66.74c/lb, whilst soymeal settled unchanged at \$304.7/t. **Price Impact – Mixed**
- On the Bursa Malaysia, Sep'26 crude palm oil fell 42RM to settle at 4,546RM. **Price Impact – Negative**
- On the Dalian, Sep'26 soybeans fell 51CNY to settle at 4,735CNY, soymeal gained 2CNY to settle at 2,951CNY, whilst soy oil fell 50CNY to settle at 8,407CNY. **Price Impact – Negative**
- Nearby (Sep'26) Brent crude fell 96c to settle at \$72.95/b. **Price Impact – Negative**
- Brent crude fell nearly 1% last week, to mark it's third week of losses after crude oil shipments through the Strait of Hormuz rose to their highest level since the beginning of conflict between the US and Iran earlier this year.
- Benchmark European natural gas gained 83c to settle at €43.44/MWh (Aug'26). **Price Impact – Mixed**
- StatsCan estimate 2026 Canadian canola area at 23.4m/aces, above estimates of 22.83m/aces, up from 21.84m/aces in the previous quarter, and up from 21.63m/aces last year. **Price Impact – Negative**
- EU Commission data places 25/26 EU OSR imports at 5.36Mmt so far this season, down from 7.54Mmt at the same time last season. **Price Impact – Mixed**
- EU Commission data places 25/26 EU soybean imports at 13.98Mmt so far this season, down from 14.52Mmt at the same time last season. **Price Impact – Mixed**
- EU Commission data places 25/26 EU soymeal imports at 18.91Mmt so far this season, down from 19.32Mmt at the same time last season. **Price Impact – Mixed**
- USDA estimate 2026 US soybean area at 85.365m/aces, above the March estimate of 84.7m/aces. **Price Impact – Negative**
- USDA estimate US soybean stocks at June 1st at 1.061bb, above estimates of 1.046bb and up from 1.008bb last year. **Price Impact – Negative**

Hubbards Seeds – Cover, Companions, Forage, Trees & More

Whether it's cover crops ahead of a spring crop, a companion in your OSR, maize for silage, or trees & hedging for structure & biodiversity, we're here to support every part of your rotation.

01380 729200 ~ hello@hubbardsseeds.co.uk

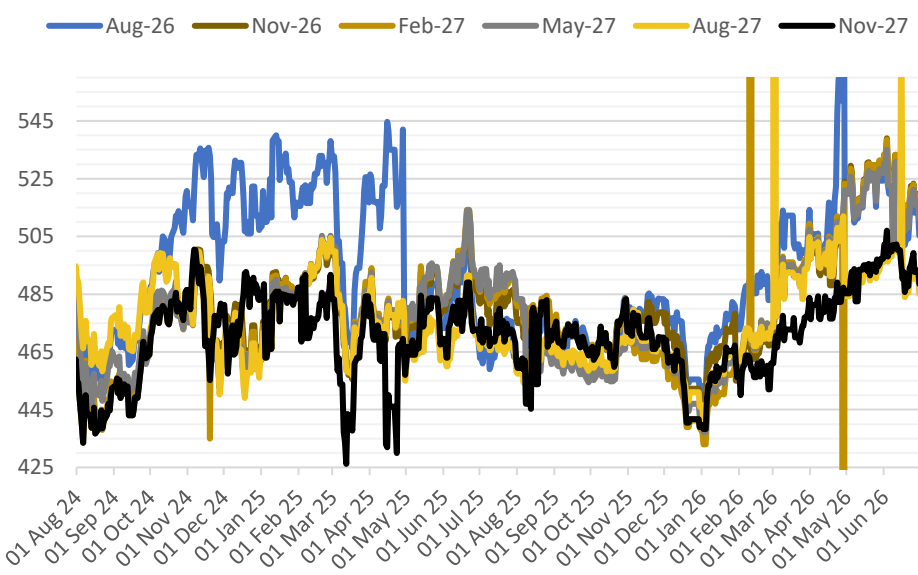
| | Erith | Liverpool | Stratford | Berwick | Montrose | Whitehill / Overbrae |
|---------------|-------|-----------|-----------|---------|----------|----------------------|
| Jul-26 | £436 | £434 | £435 | £418 | £414 | £408 |
| Aug-26 | £436 | £434 | £435 | £418 | £414 | £408 |
| Sep-26 | £441 | £439 | £440 | £422 | £416 | £410 |
| Oct-26 | £443 | £441 | £442 | £424 | £418 | £412 |
| Nov-26 | £445 | £443 | £444 | £426 | £420 | £414 |
| Dec-26 | £446 | £444 | £445 | £427 | £421 | £415 |
| Jan-27 | £446 | £444 | £445 | £427 | £421 | £415 |

NO CARRY JAN'27 ONWARDS



MARKET TRENDS & CURRENCY

MATIF OSR Daily Settlement €/t



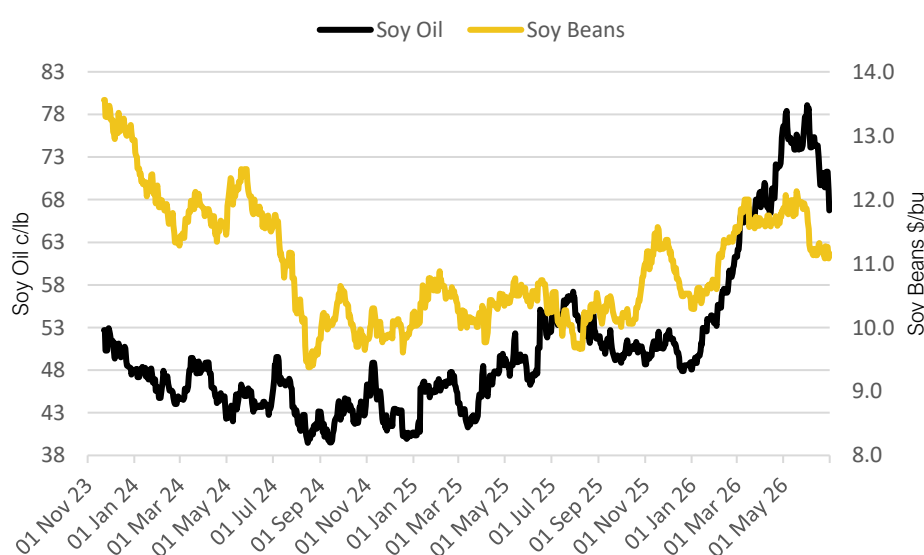
Nearby ICE London Feed Wheat Daily Settlement £/t



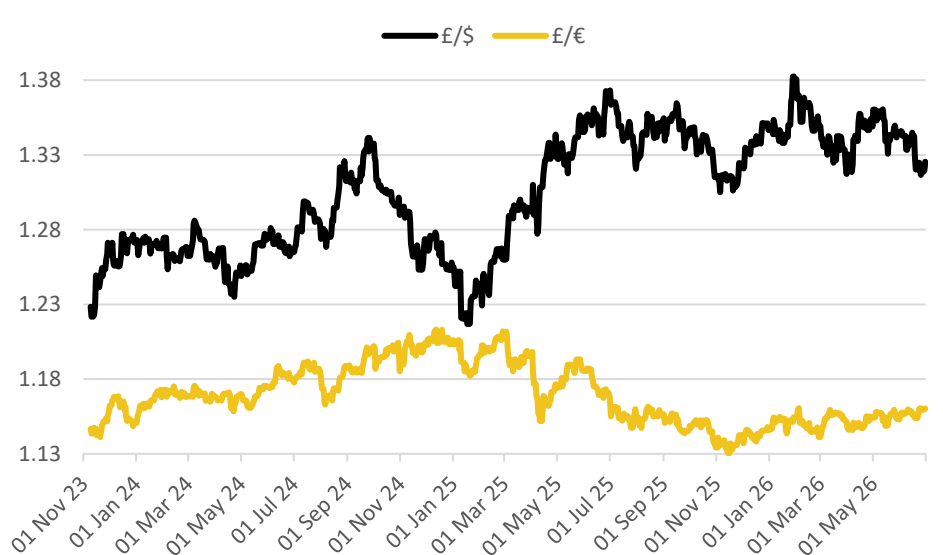
| Contract | \$ | Month | Daily Change |
|------------------|----------|--------|--------------|
| Soybeans (\$/bu) | \$11.16 | Jul-26 | +8.00c |
| Soy Oil (c/lb) | 66.74c | Jul-26 | -2.33c |
| Soy Meal (\$/T) | \$304.70 | Jul-26 | unch |

| Delivery Month | £/t | Daily Change |
|----------------|---------|--------------|
| Nov-26 | £177.25 | Unch |
| Jan-27 | £180.75 | Unch |
| Mar-27 | £184.25 | Unch |
| May-27 | £187.50 | -£0.25 |

CBOT US Soy Beans & Soy Oil



Exchange Rates: GBP / USD & GBP / EUR



THE UNITED OILSEEDS OSR REBOOT5

Restore UK OSR Self Sufficiency – Boost Economic Growth – Reverse Biodiversity Declines – Level the Playing Field for UK Farmers

SAVE OUR YELLOW FIELDS! – [View the Campaign Here](#)