



United Oilseeds & AHDB Joint Seminar 2020

Welcome and introduction

Chaired by Andrew Cragg, United Oilseeds

AHDB update

Judith Stafford

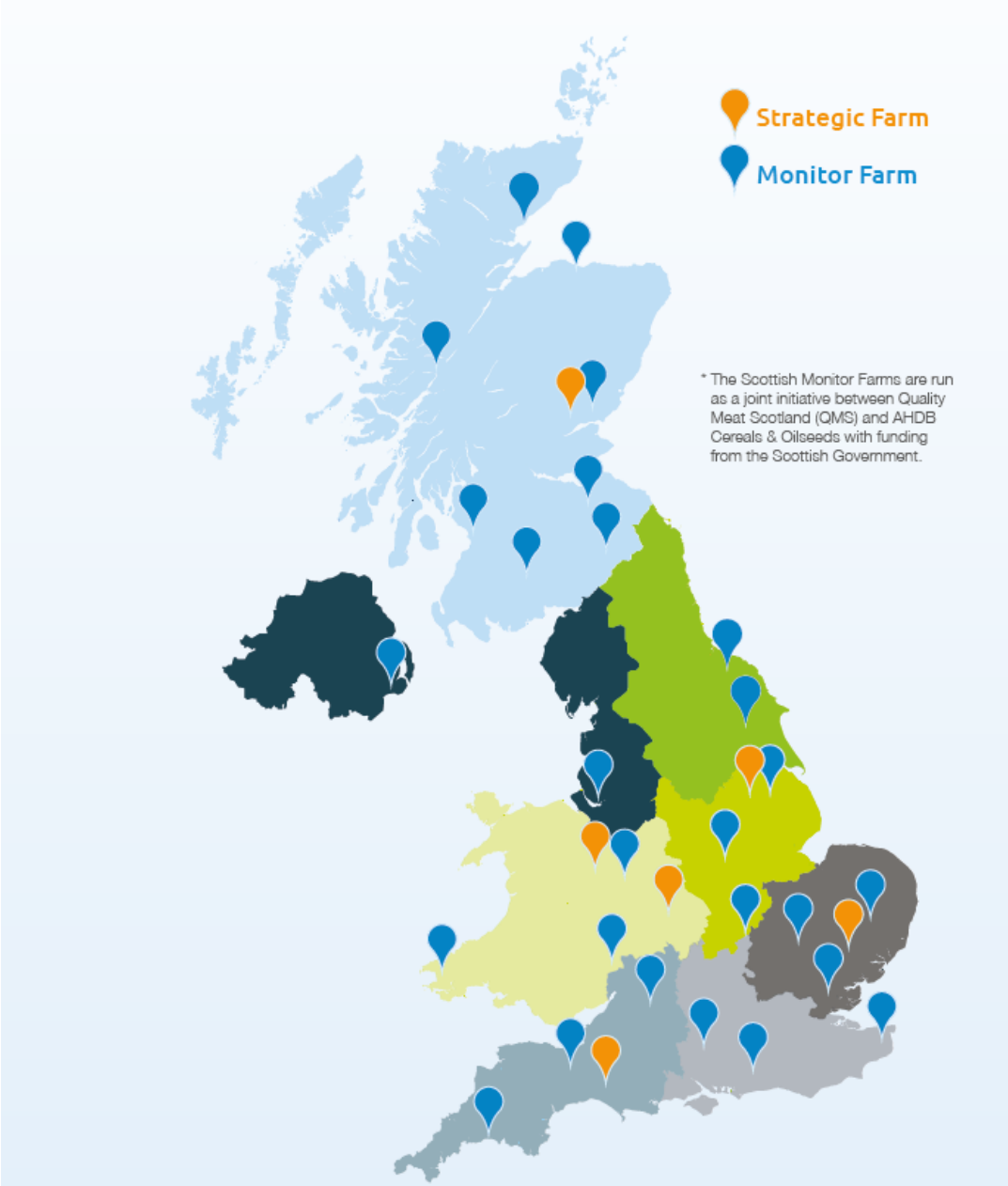
Knowledge Exchange Manager, East Midlands

To include

- Monitor Farms
- Strategic Farms
- Benchmarking
- What's new?

Monitor Farms & Strategic Farms

Farm Excellence Platform



Monitor Farms

- Typical commercial business
- Locally relevant
- Knowledge sharing
- Farmer led, farmer driven



Northampton Monitor Farm



Monitor Farmer Rick Davies

**Newton Lodge Farms
Clifton Reynes, Olney**



Summer meeting 23rd June 2020







Strategic Farms

Putting research into practice

Rob Fox, Leamington Spa

- Cultivation and rooting
- Soil health





Benchmarking with AHDB



**What was your cost of production
for harvest 2019?**

- Know your cost of production (£/t and £/ha)
- Compare year on year
- Compare with others (anonymously)

							
Feedback Meeting Group Report Summary - 2017 Harvest							
Potato	Per Ha						Group Averages
	Farm 1	Farm 2	Farm 3	Farm 4	Farm 5	Farm 6	
Physical summary							
Total area grown (ha)	30	19	16	3	42	13	20
Total tonnage produced (t)	930	774	675	135	1244	725	747
Average yield (t/ha)	31	41	42	45	30	57	41
Average price (£/t)	465	160	175	135	170	85	198
Financial indicators							
Gross output							
Total Sales/used on farm	14415	6518	7383	6075	5100	4828	7386
Total gross output (£)	14415	6518	7383	6075	5100	4828	7386
Variable costs							
Seeds (£)	530	1008	340	340	341	810	562
Fertiliser, manure and trace elements (£)	475	333	265	280	311	300	327
Crop Protection (£)	255	595	614	615	580	699	560
Sundries (£)	10	100	114	100	83	85	82

Oilseed Rape Benchmark (Per Hectare) Report
Ranked by: Full economic cost of production

	Top 25%	Middle 50%	Bottom 25%
Key Performance Indicators			
Overheads as a percentage of income (%)	52.23	58.31	69.96
Seed costs (£/t)	15.44	15.88	18.83
Inorganic fertiliser costs (£/t)	52.82	55.18	59.45
Crop protection costs (£/t)	44.80	52.61	54.48
Hectares per labour full time equivalent	285.59	262.44	189.94
Performance Indicators			
Total area grown (ha)	79.71	65.05	63.37
Total production (t)	252	228	236
Yield (t/ha)	3.17	3.50	3.72
Price (£/t)	344.92	348.15	345.43
Inorganic N (kg/ha)	177	202	213



FARMBENCH

<http://farmbench.ahdb.org.uk>

Regional Contact

Rebecca.brookes@ahdb.org.uk

07979 941982

What's new from AHDB

Horizon Reports



Brexit prospects for UK cereals and oilseeds trade

The aim of this report is to provide readers with an understanding of how Cereals and Oilseeds trade could be affected once the UK



Preparing for Change: The Characteristics of top Performing Farms

AHDB previously published 'Brexit scenarios: An impact assessment', aiming to help farmers and growers understand the potential

Wheat and barley disease management guide



Coming later this year..

**Oilseed rape disease management
guide**

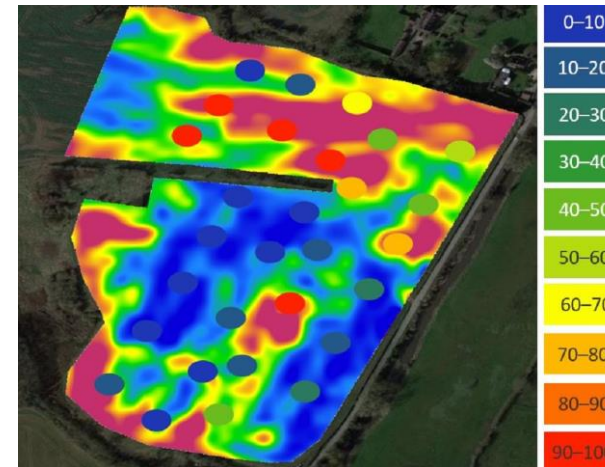


Clubroot management guidelines

Clubroot management



Targeted management of clubroot



See AHDB website

Principles of soil management

- Soil health
- Soil texture and structure
- Cation exchange capacity
- Soil organic matter
- Soil biology

www.ahdb.org.uk/greatsoils



Coming very soon..

Arable soil management guide



RB209 – Key changes

- Greater emphasis on soil and grain analysis
- Guidance on grain sampling
- Alignment of standard yields for N and P/K recommendations



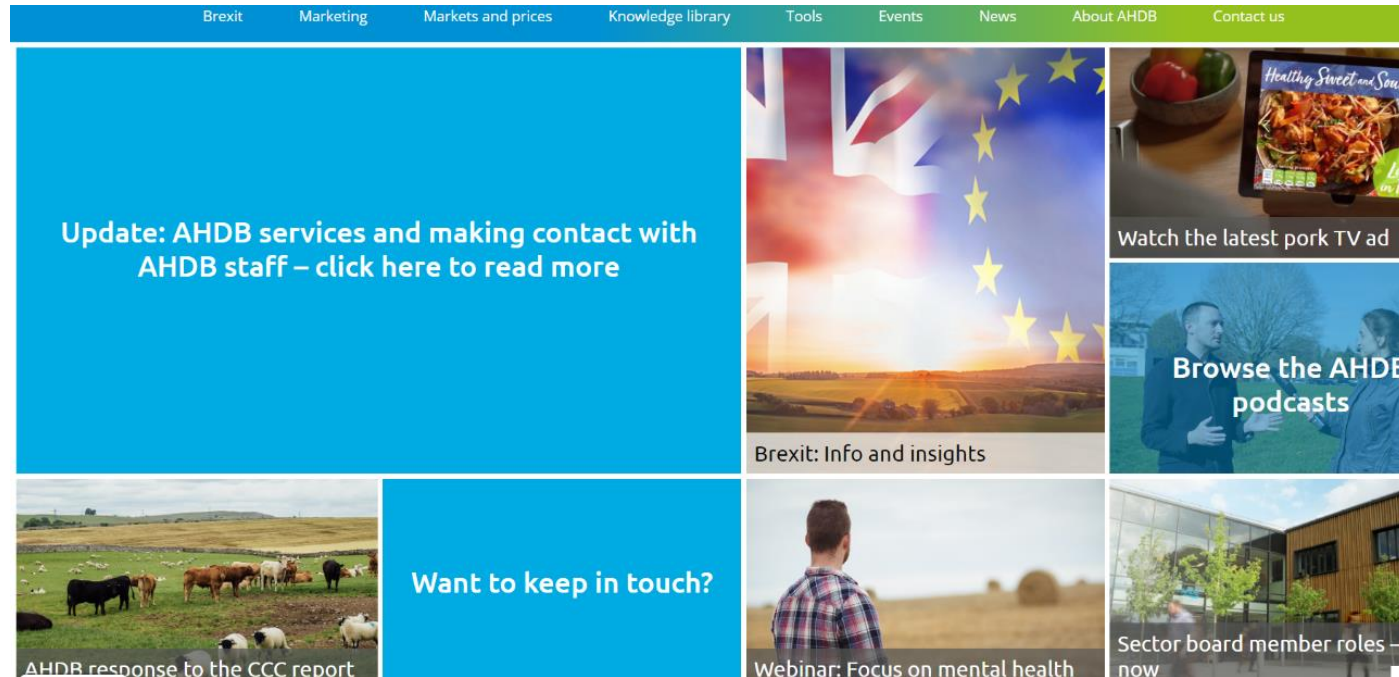
RB209 – Key changes



- Reduction in P offtake in winter wheat
- Grain P offtake updated
- P and K recommendation tables revised
- RB209 to be available digitally

Newsletters

- Sign up: ahdb.org.uk



- For Crop Research News ahdb.org.uk/crn

Thank you

Judith.stafford@ahdb.org.uk

07891 556623